

Town of Deep River Zoning By-law Schedule "A"

Approximate location of the Ottawa River Flood Plain.
(115 m contour)

All Zones along the Ottawa River must
be read in conjunction with the provisions of
Section 3.14 of the Zoning Bylaw *Ottawa River Flood Plain*

This is Schedule "A" to amending By-Law No. 17-2007
Passed the 1st day of AUGUST, 2007,

and hereby replaces the original Schedule "A"
(Key Maps 1 - 52, inclusive) to Zoning By-law 24-96.

Signatures of Signing Officers:

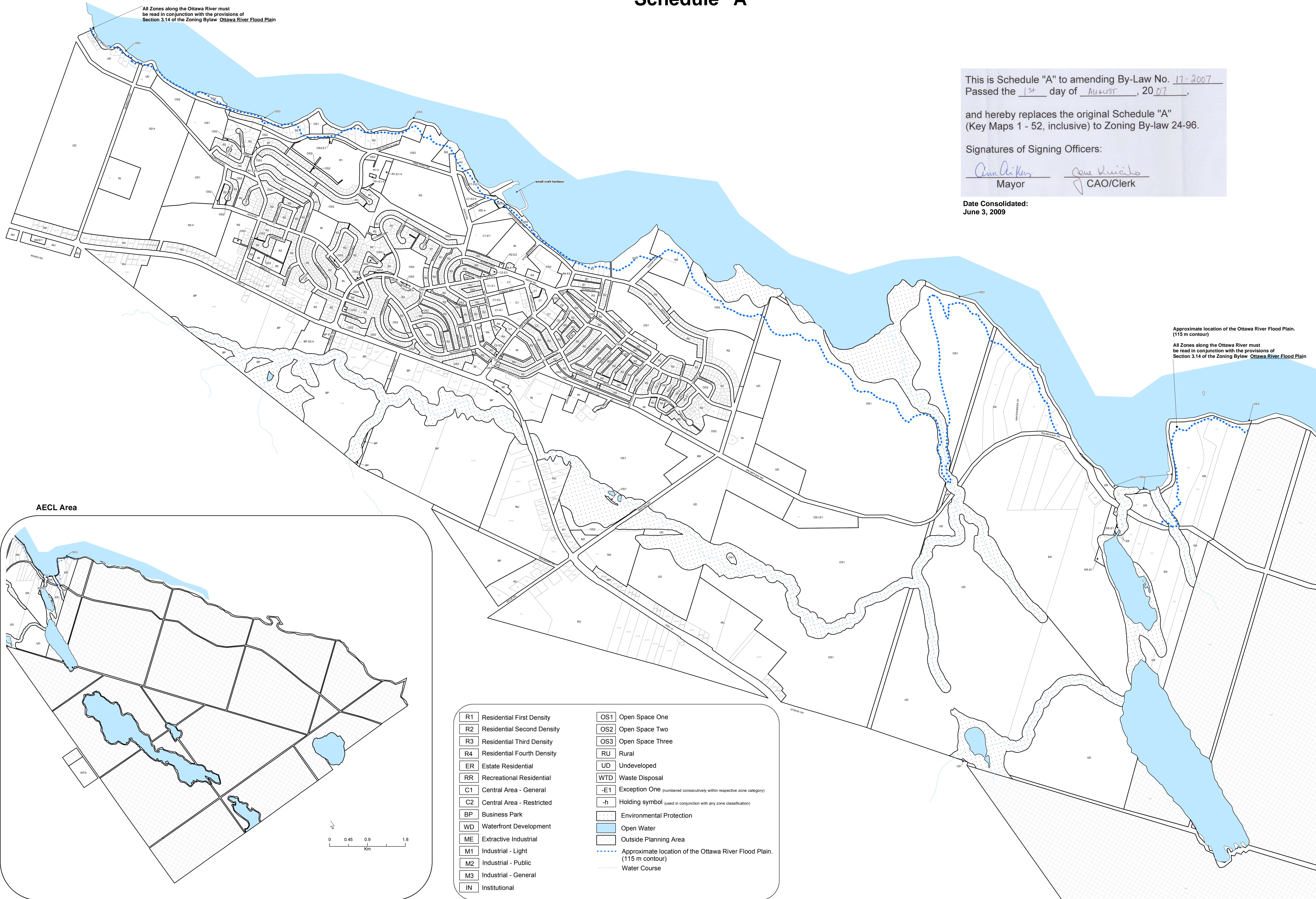
Ann Aiken
Mayor

Paul Kucich
CAO/Clerk

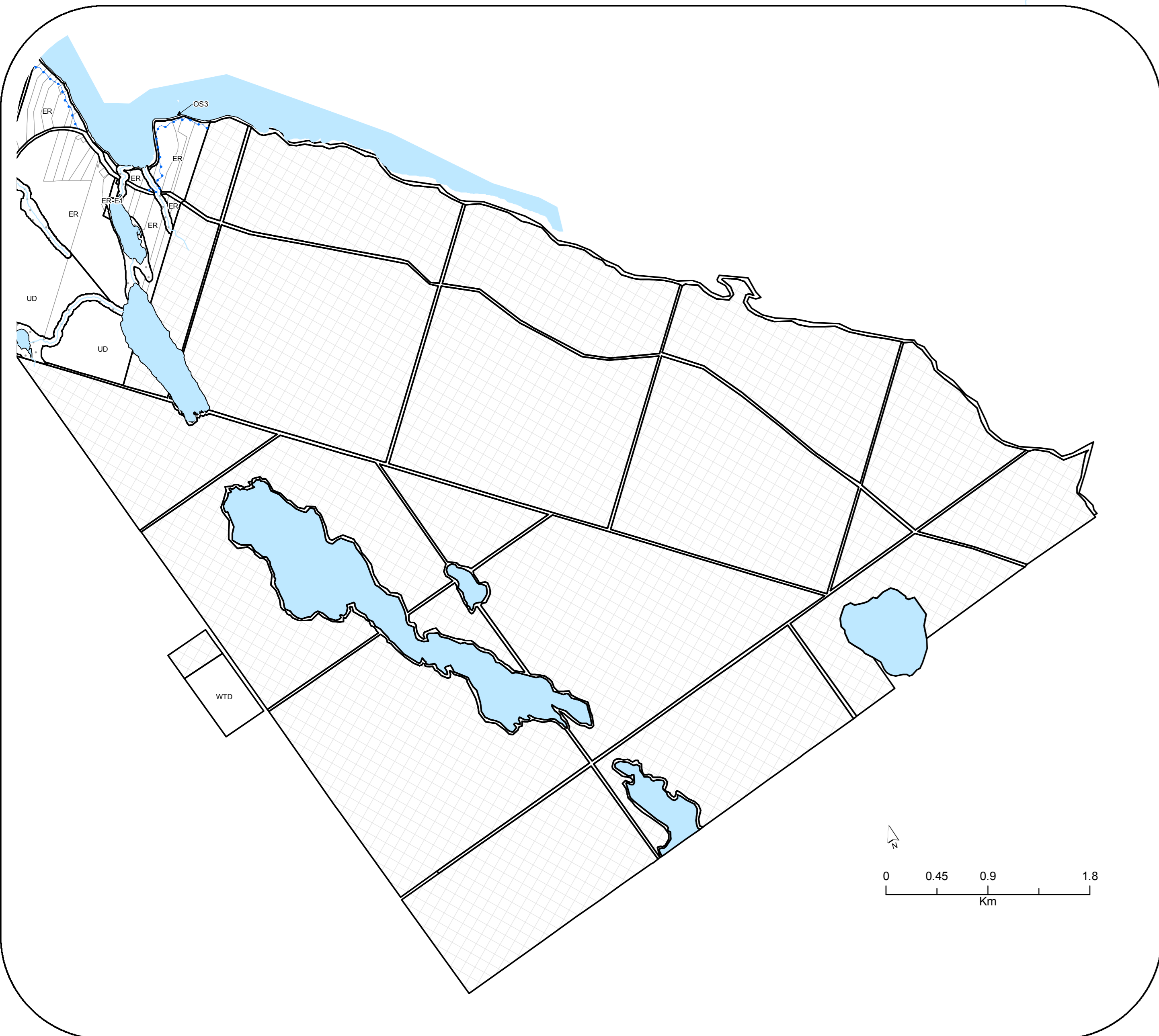
Date Consolidated:
June 3, 2009

Approximate location of the Ottawa River Flood Plain.
(115 m contour)

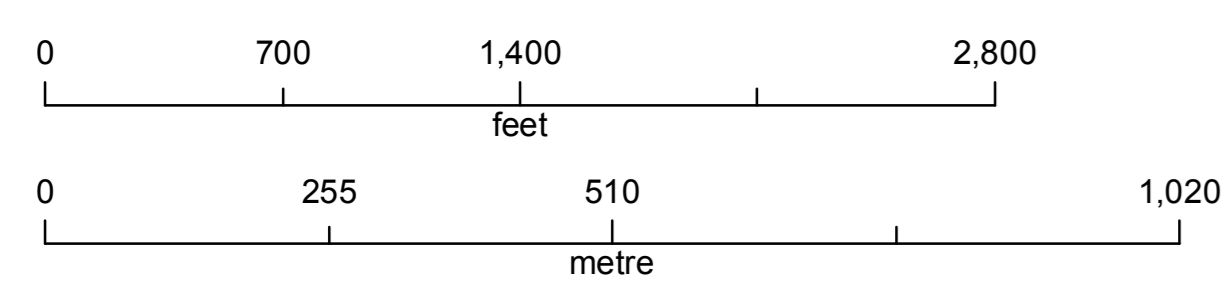
All Zones along the Ottawa River must
be read in conjunction with the provisions of
Section 3.14 of the Zoning Bylaw *Ottawa River Flood Plain*



AECL Area



R1	Residential First Density	OS1	Open Space One
R2	Residential Second Density	OS2	Open Space Two
R3	Residential Third Density	OS3	Open Space Three
R4	Residential Fourth Density	RU	Rural
ER	Estate Residential	UD	Undeveloped
RR	Recreational Residential	WTD	Waste Disposal
C1	Central Area - General	-E1	Exception One (numbered consecutively within respective zone category)
C2	Central Area - Restricted	-h	Holding symbol (used in conjunction with any zone classification)
BP	Business Park	Environmental Protection	
WD	Waterfront Development	Open Water	
ME	Extractive Industrial	Outside Planning Area	
M1	Industrial - Light	Approximate location of the Ottawa River Flood Plain. (115 m contour)	
M2	Industrial - Public	Water Course	
M3	Industrial - General		
IN	Institutional		



1:6,800



Produced by the County of Renfrew Development and Property Department
under license with the Ontario Ministry of Natural Resources
©2007, Queen's Printer for Ontario
This map is illustrative only. Do not rely on it as being a precise
indicator of routes, locations of features, nor as a guide to navigation.