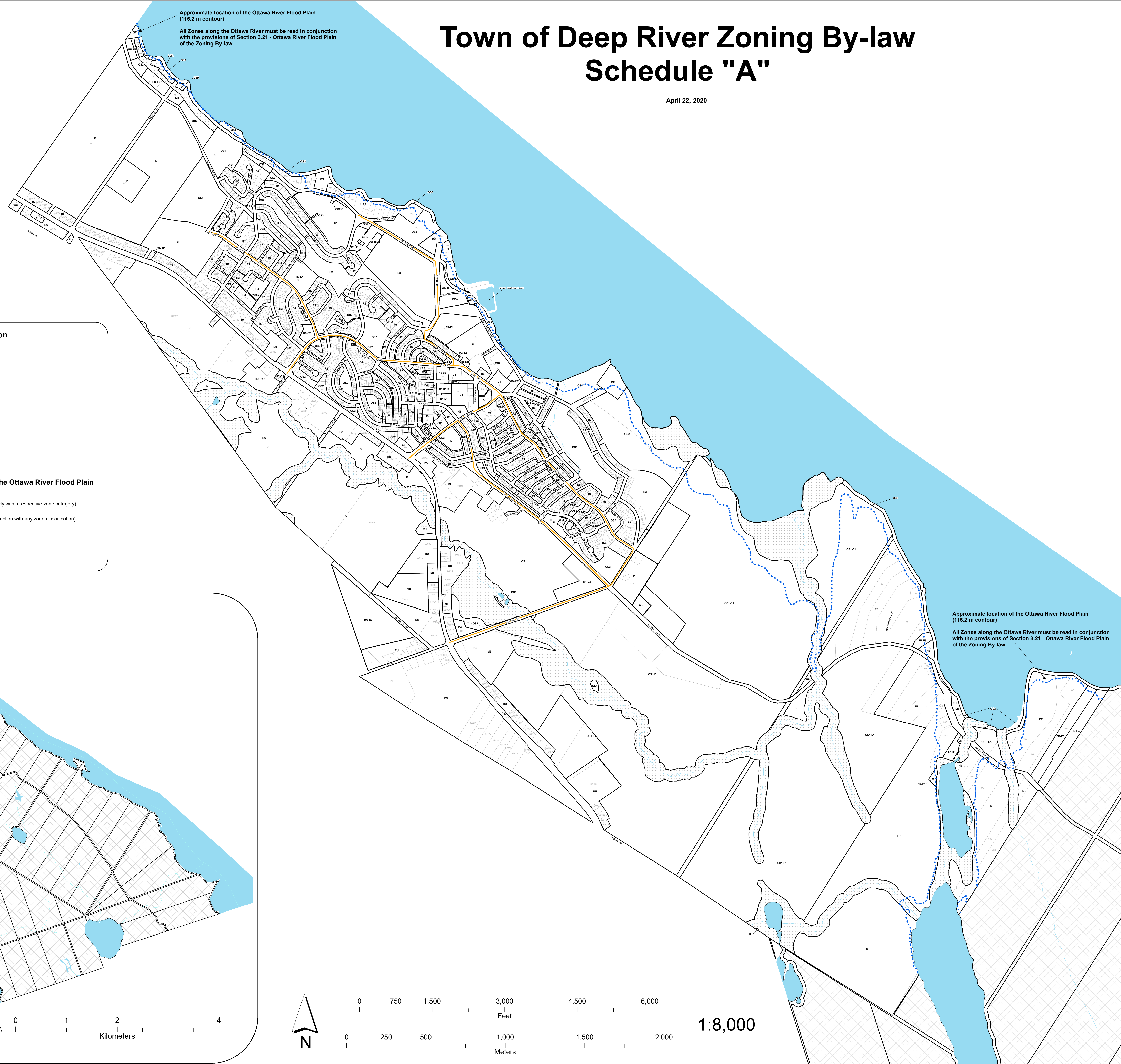
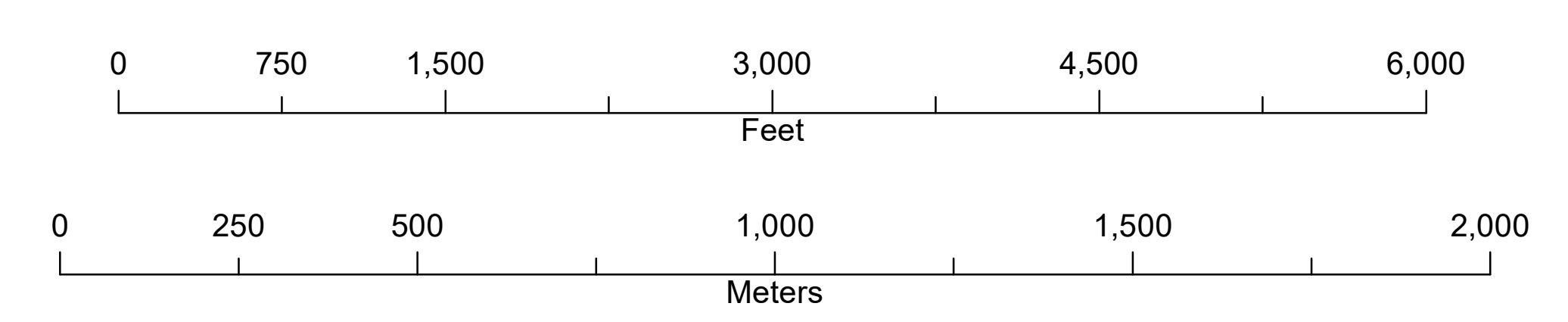
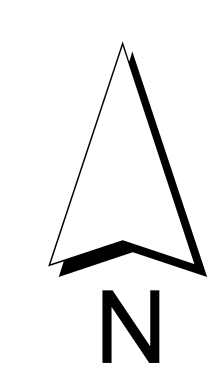
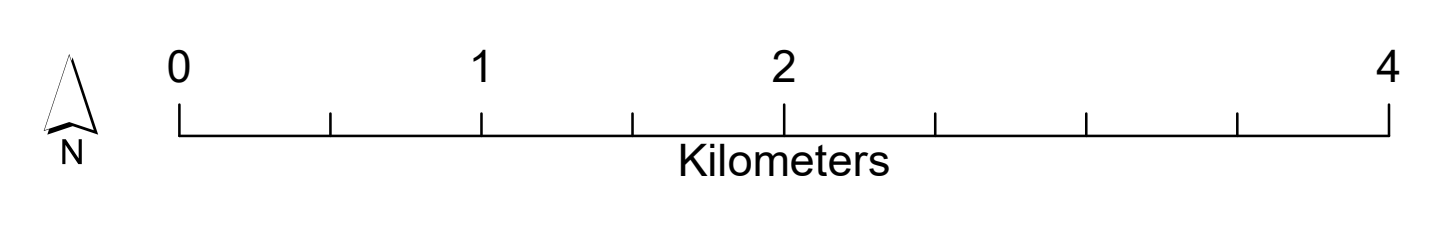


Town of Deep River Zoning By-law Schedule "A"

April 22, 2020



R1 Residential One	Environmental Protection
R2 Residential Two	OS1 Open Space One
R3 Residential Three	OS2 Open Space Two
R4 Residential Four	OS3 Open Space Three
ER Estate Residential	RU Rural
LSR Limited Service Residential	D Development
C1 Town Centre - General	Waterbody
C2 Town Centre - Restricted	Watercourse
HC Highway Commercial	Collector Road
M1 Light Industrial	Outside Planning Area
M2 Public Industrial	Approximate location of the Ottawa River Flood Plain (115.2m contour)
M3 General Industrial	-E1 Exception (Numbered consecutively within respective zone category)
ME Extractive Industrial	-h Holding Symbol (Used in conjunction with any zone classification)
MD Disposal Industrial	
IN Institutional	
WD Waterfront Development	



1:8,000

Note 1: Data layers obtained from the County of Renfrew