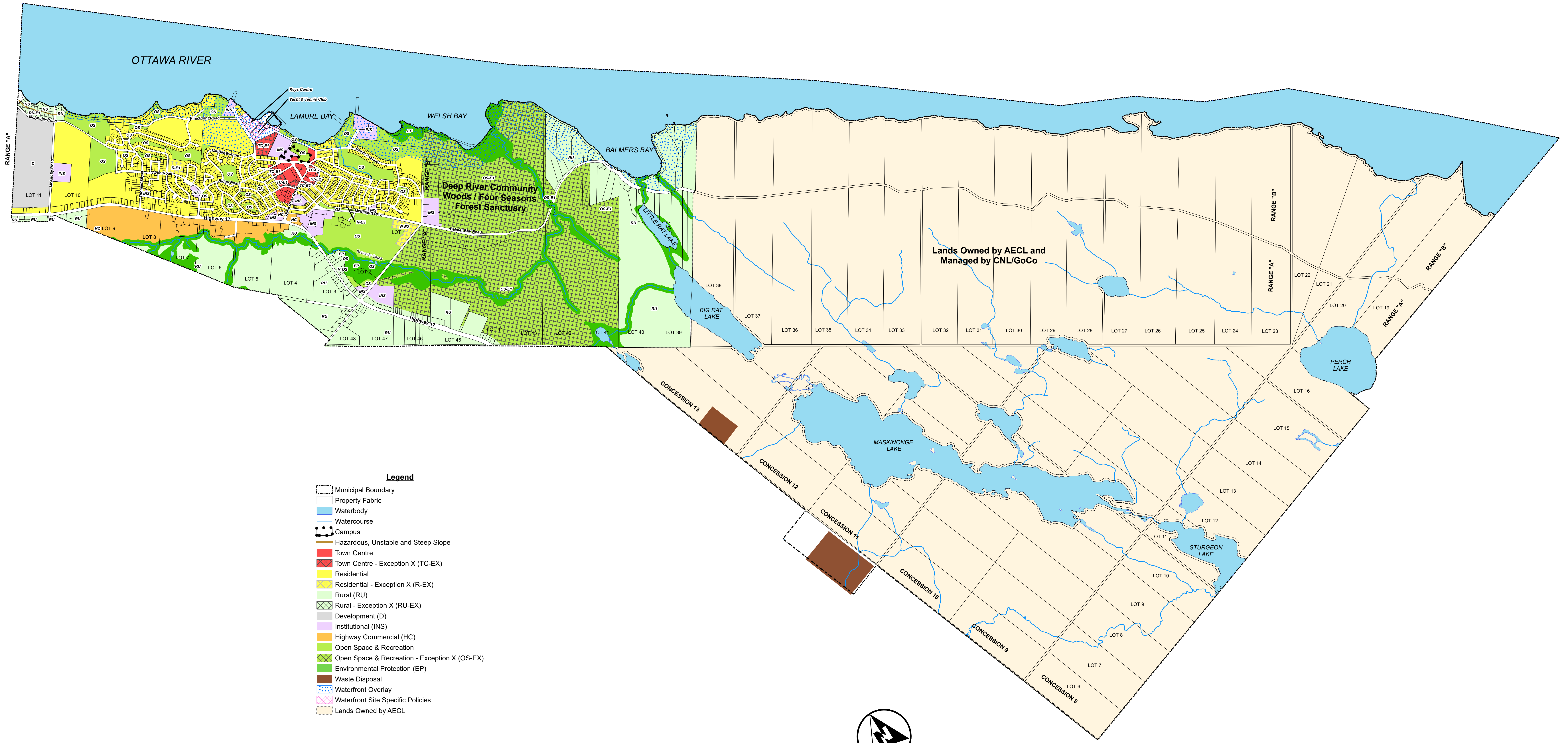
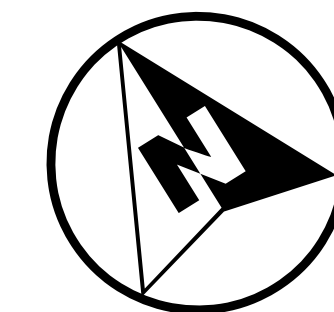


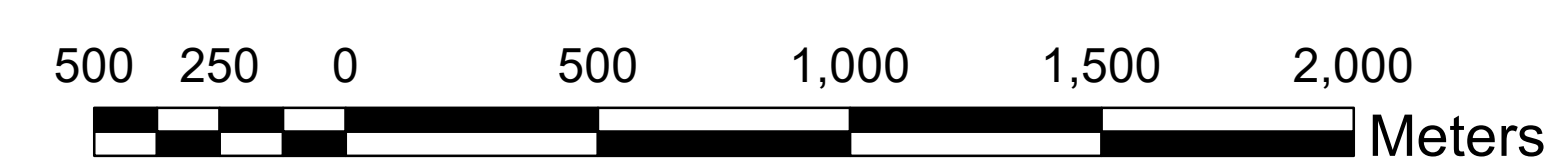
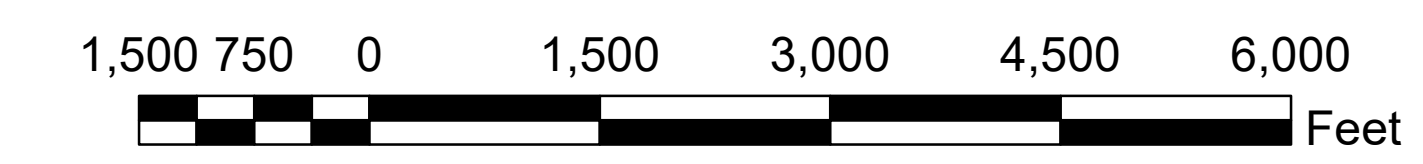
Town of Deep River Official Plan Schedule "A" - Land Use Plan



- Legend**
- Municipal Boundary
 - Property Fabric
 - Waterbody
 - Watercourse
 - Campus
 - Hazardous, Unstable and Steep Slope
 - Town Centre
 - Town Centre - Exception X (TC-EX)
 - Residential
 - Residential - Exception X (R-EX)
 - Rural (RU)
 - Rural - Exception X (RU-EX)
 - Development (D)
 - Institutional (INS)
 - Highway Commercial (HC)
 - Open Space & Recreation
 - Open Space & Recreation - Exception X (OS-EX)
 - Environmental Protection (EP)
 - Waste Disposal
 - Waterfront Overlay
 - Waterfront Site Specific Policies
 - Lands Owned by AECL

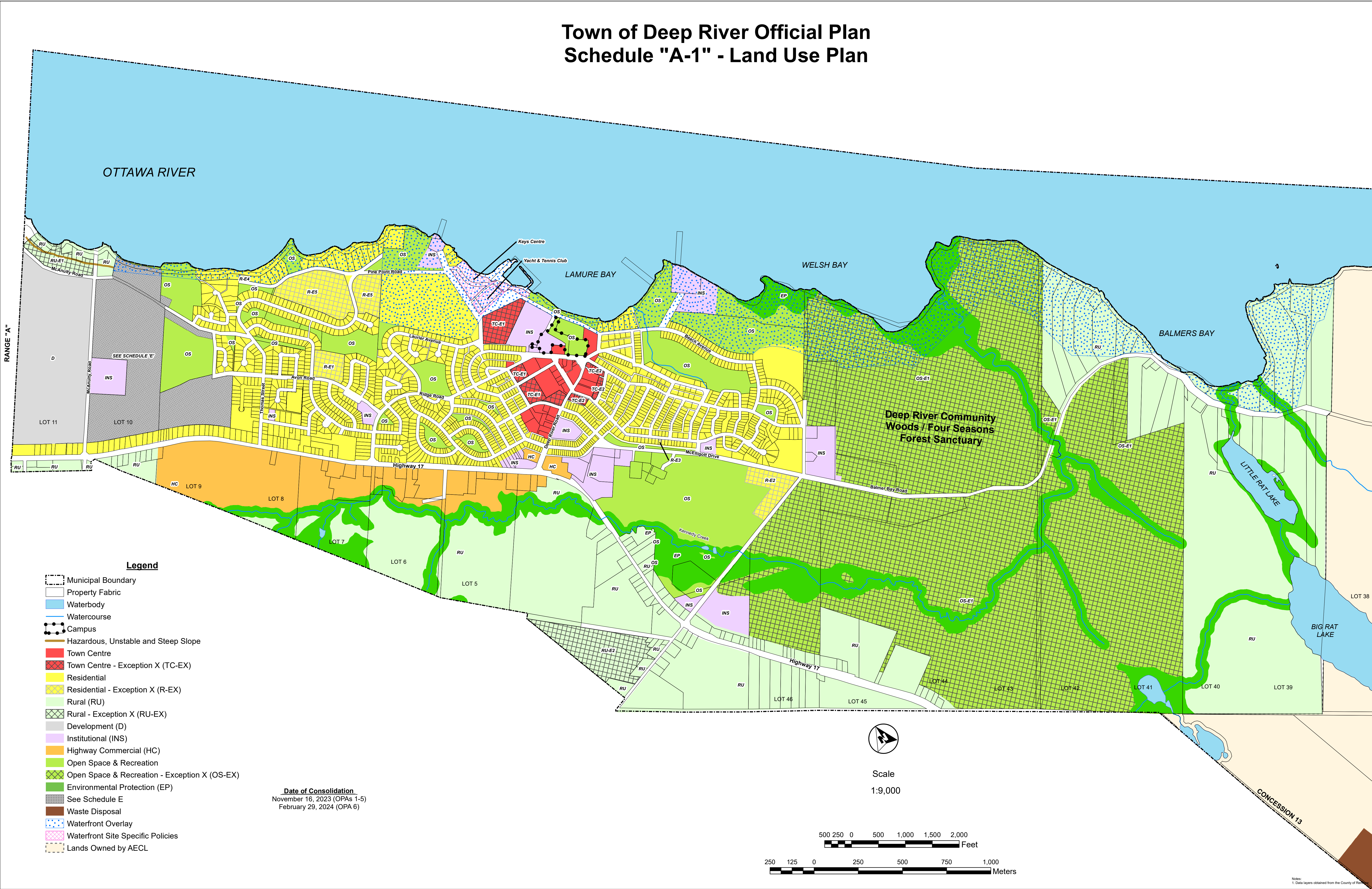


Scale
1:15,000



Notes:
1. Data layers obtained from the County of Renfrew
2. Detailed Map of Town included as Schedule A-1

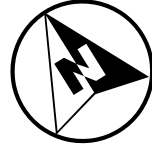
Town of Deep River Official Plan Schedule "A-1" - Land Use Plan



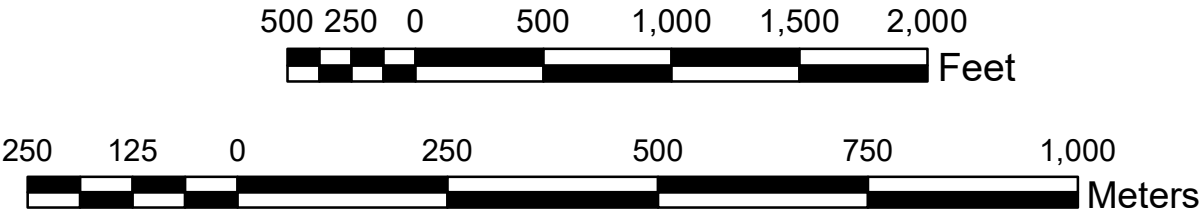
Legend

- Municipal Boundary
- Property Fabric
- Waterbody
- Watercourse
- Campus
- Hazardous, Unstable and Steep Slope
- Town Centre
- Town Centre - Exception X (TC-EX)
- Residential
- Residential - Exception X (R-EX)
- Rural (RU)
- Rural - Exception X (RU-EX)
- Development (D)
- Institutional (INS)
- Highway Commercial (HC)
- Open Space & Recreation
- Open Space & Recreation - Exception X (OS-EX)
- Environmental Protection (EP)
- See Schedule E
- Waste Disposal
- Waterfront Overlay
- Waterfront Site Specific Policies
- Lands Owned by AECL

Date of Consolidation
November 16, 2023 (OPAs 1-5)
February 29, 2024 (OPA 6)

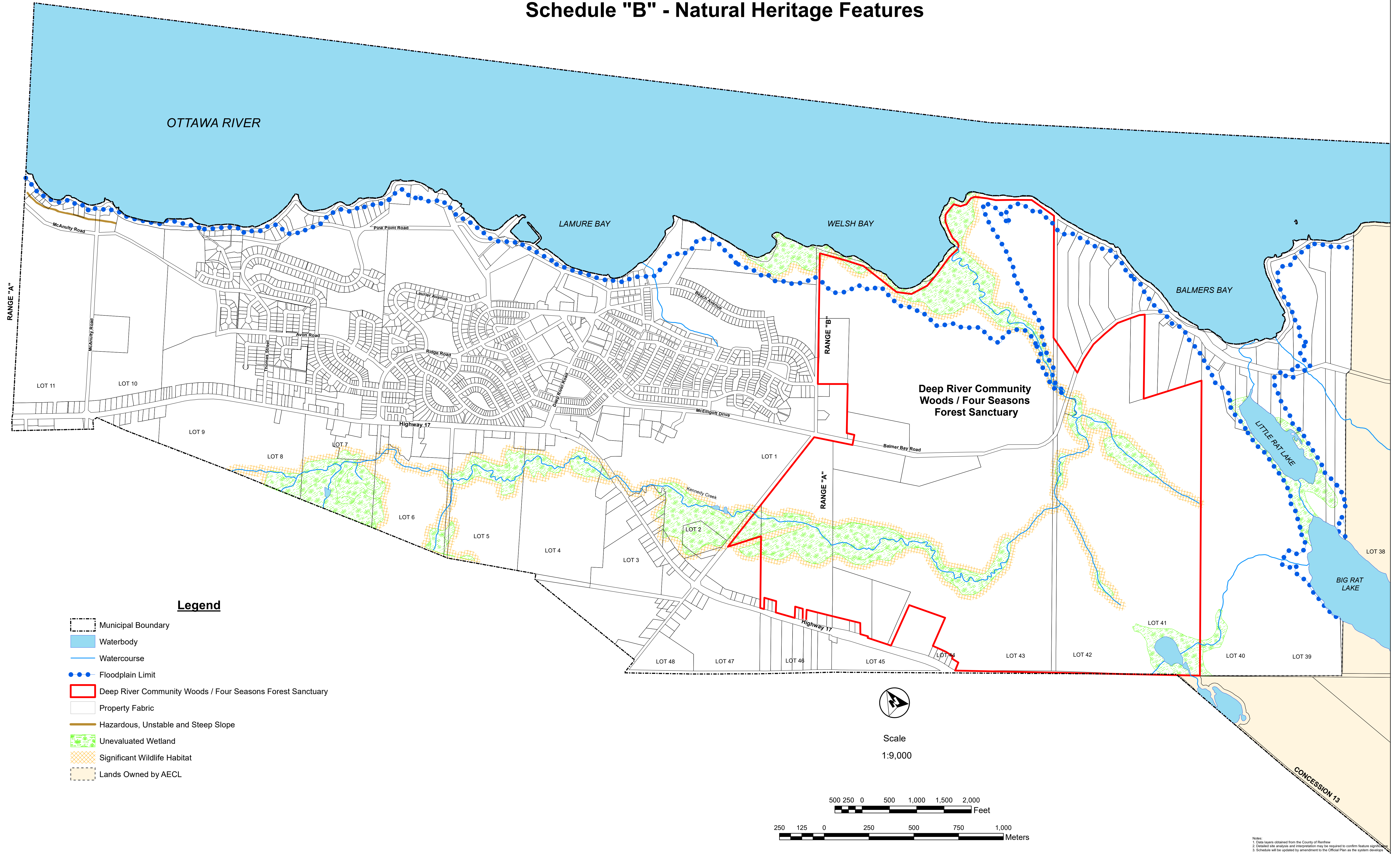


Scale
1:9,000



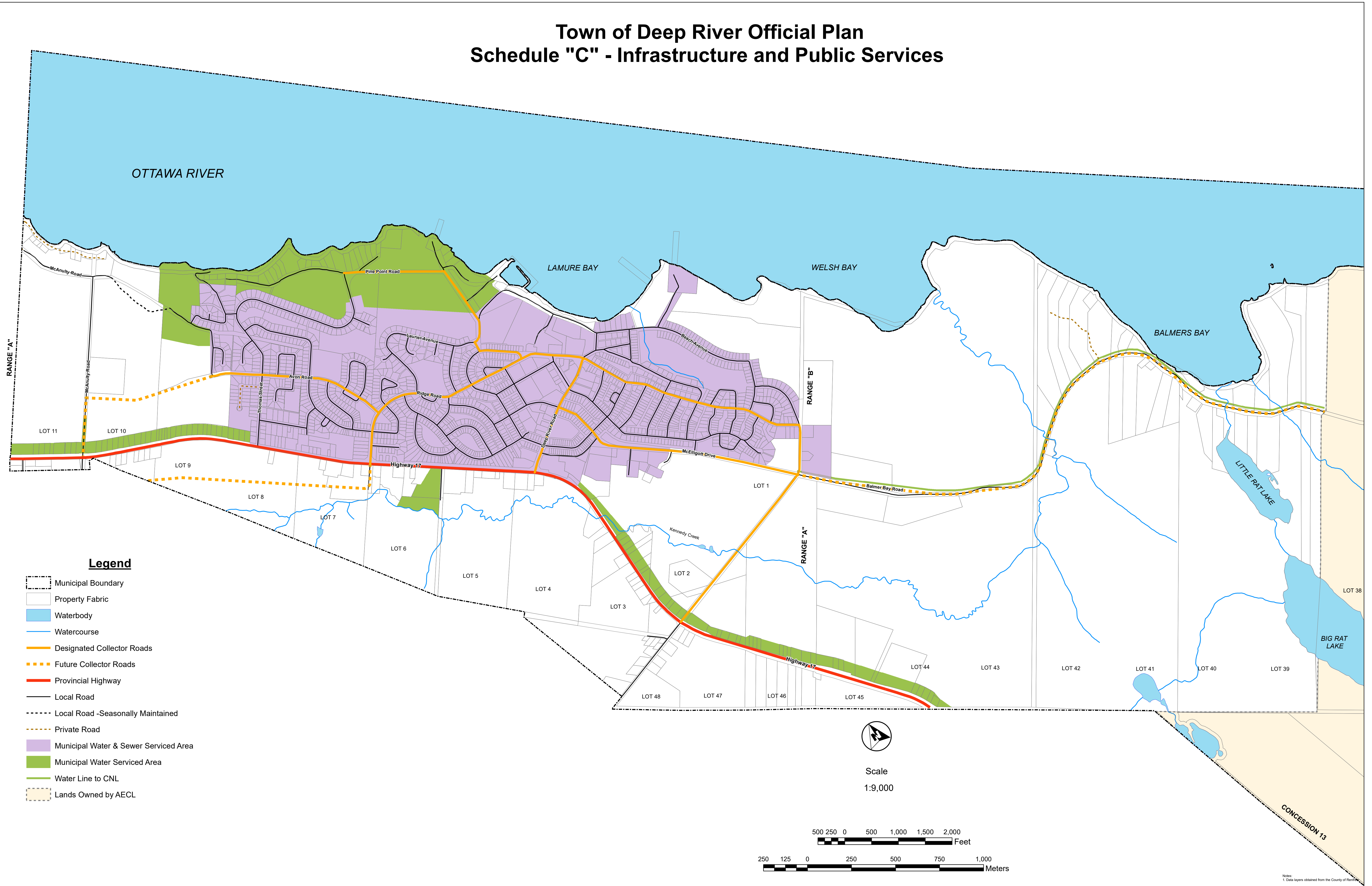
Notes:
1. Data layers obtained from the County of York

Town of Deep River Official Plan Schedule "B" - Natural Heritage Features



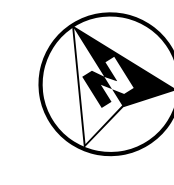
Notes:
 1. Data layers obtained from the County of Renfrew
 2. Detailed site analysis and interpretation may be required to confirm feature significance
 3. Schedule will be updated by amendment to the Official Plan as the system develops

Town of Deep River Official Plan Schedule "C" - Infrastructure and Public Services

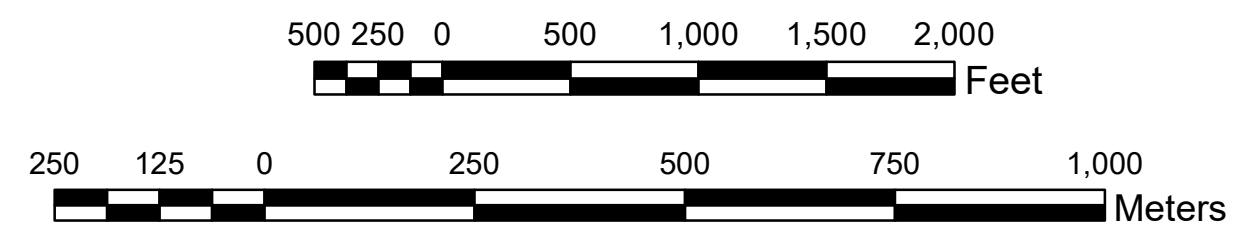


Legend

- Municipal Boundary
- Property Fabric
- Waterbody
- Watercourse
- Designated Collector Roads
- Future Collector Roads
- Provincial Highway
- Local Road
- Local Road -Seasonally Maintained
- Private Road
- Municipal Water & Sewer Serviced Area
- Municipal Water Serviced Area
- Water Line to CNL
- Lands Owned by AECL

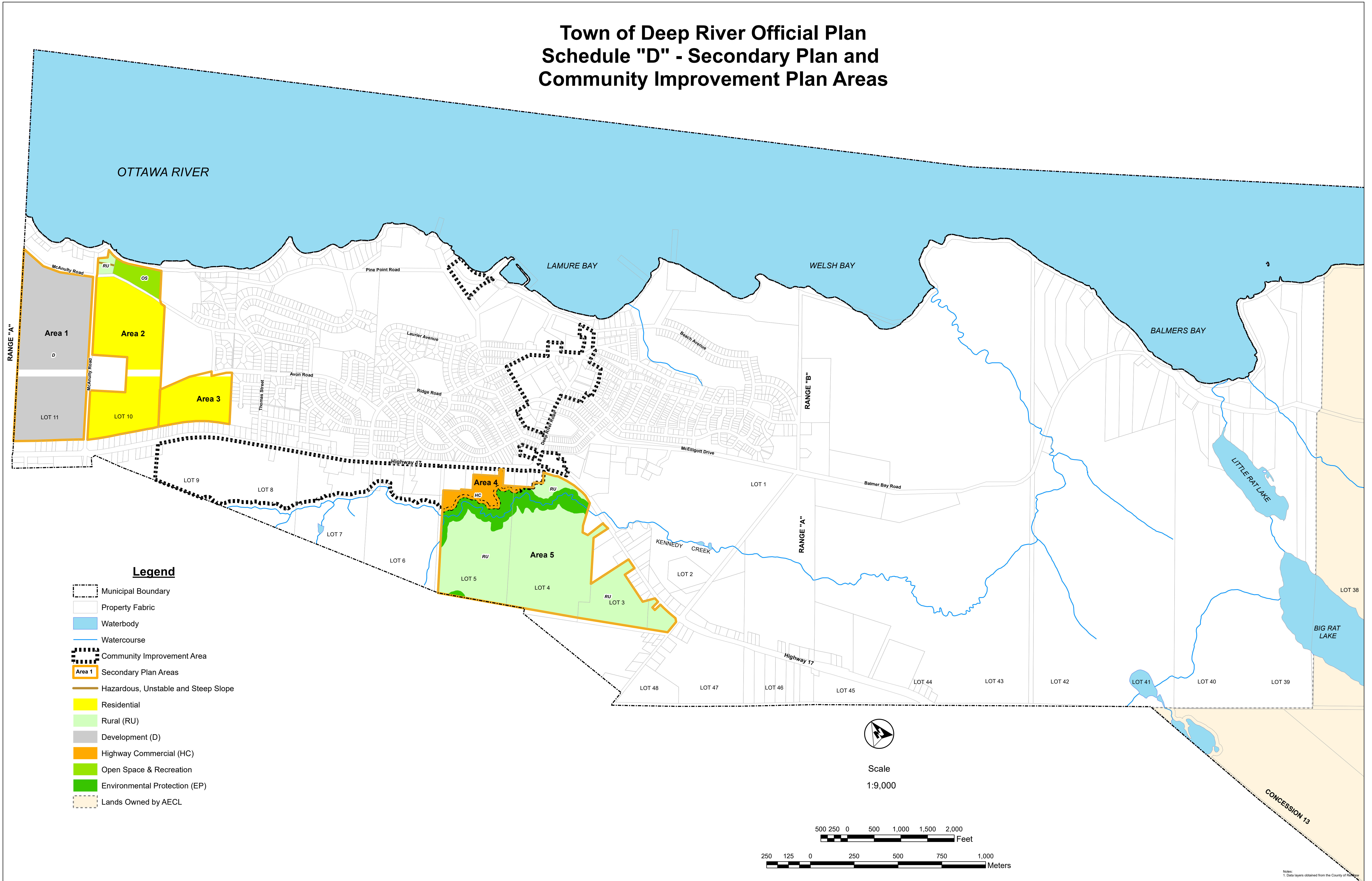


Scale
1:9,000



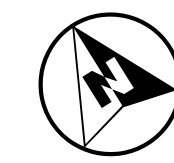
Notes:
1. Data layers obtained from the County of Renfrew

Town of Deep River Official Plan Schedule "D" - Secondary Plan and Community Improvement Plan Areas

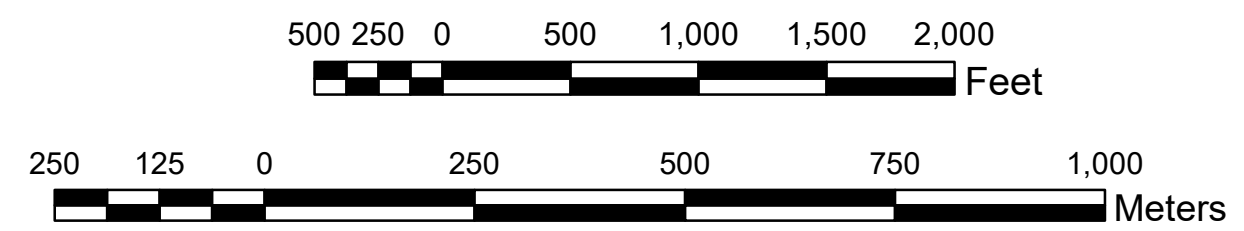


Legend

- Municipal Boundary
- Property Fabric
- Waterbody
- Watercourse
- Community Improvement Area
- Area 1 Secondary Plan Areas
- Hazardous, Unstable and Steep Slope
- Residential
- Rural (RU)
- Development (D)
- Highway Commercial (HC)
- Open Space & Recreation
- Environmental Protection (EP)
- Lands Owned by AECL



Scale
1:9,000



Notes:
1. Data layers obtained from the County of Frontenac

Schedule "A" to the West-End Secondary Plan



Legend

- Area Boundary
- New Residential - Area 2 - Exception
- West-End Secondary Plan Boundary
- Double Dip Road Allowance Re-alignment
- Environmental Protection
- Open Space
- New Residential
- Cemetery
- Property Fabric
- Waterbody

