



Date: Friday, November 21, 2025

Town of Deep River

100 Deep River Road, P.O Box 400, Deep River, ON K0J 1P0

www.deepriver.ca

Addendum #4

**Bid Opportunity: 2025-RFT-001 Deep River Water
Treatment Plant Upgrades**

**Question Deadline:
Wednesday, November 19, 2025**

**Closing Date:
Wednesday, November 26, 2025 by 13:30:00 EST**

This Addendum will form part of the RFT document.

In the event of any conflicting or inconsistent information, this addendum will take precedence over all requirements of the original RFT document, and any addenda issued previously.

All other requirements of the RFT document remain the same.

Bidders must acknowledge receipt of this addendum, in the field requested, when submitting their bid.

PART 1 – ATTACHMENTS:

1.1 Updated Process Drawings to Reflect Veolia Shop Drawings

- D-102 – Floor Plan (2) – Issued for Addendum #4
- D-301 – Section View and Photos - Issued for Addendum #4
- D-601 – Process Instrumentation Schematic Clarifiers - Issued for Addendum #4

1.2 Updated Valve Schedule (Section 11101S1) to Reflect Veolia Shop Drawings

- Section 11101S1 – Valve Schedule-v01 – Issued for Addendum #4

1.3 Updated Instrument Schedule (Section 13560S1) to Reflect Veolia Shop Drawings

- Section 13560S1 – Instrument Schedule-v01 – Issued for Addendum #4

PART 2 – BIDDER'S QUESTIONS:

2.1 Question 1: Is it acceptable for the tender form cost breakdown (pages FT-4 to FT-7) be submitted 24 hours after closing? Please advise.

Answer 1: Yes, bidders may submit the detailed cost breakdown 24-hours after closing.

2.2 Question 2: Would the mandatory site meeting attendees list be available as we are preparing our quotation for the pre-construction inspection requirement for the above reference project.

Answer 2: The list of mandatory site meeting attendees was provided in Addendum #3, Item 2.5.

2.3 Question 3: During the site visit we had requested the drawings and procedure to replace the actiflo panel that controls the 3 filter beds.

It is being replaced in the same location as the existing panel with all piping entering the bottom of the cabinet.

We will have to keep a least one filter operational at all times and will need the info on how the engineers see this change over taking place.

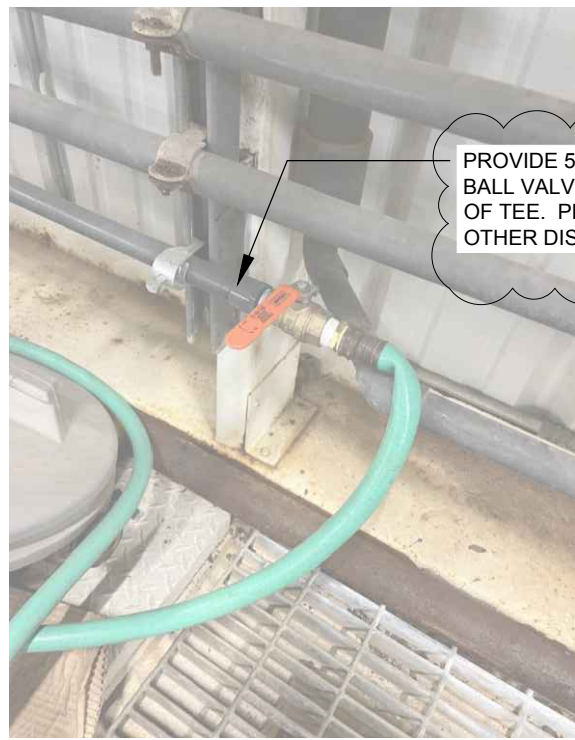
We assumed it would be included in the list of information from the Veolia package , I can only find the communication drawing.

Answer 3: Veolia to provide clarification on recommended Actiflo PLC replacement staging procedure on Monday, November 24, 2025, which will be communicated to bidders via Addendum #5.

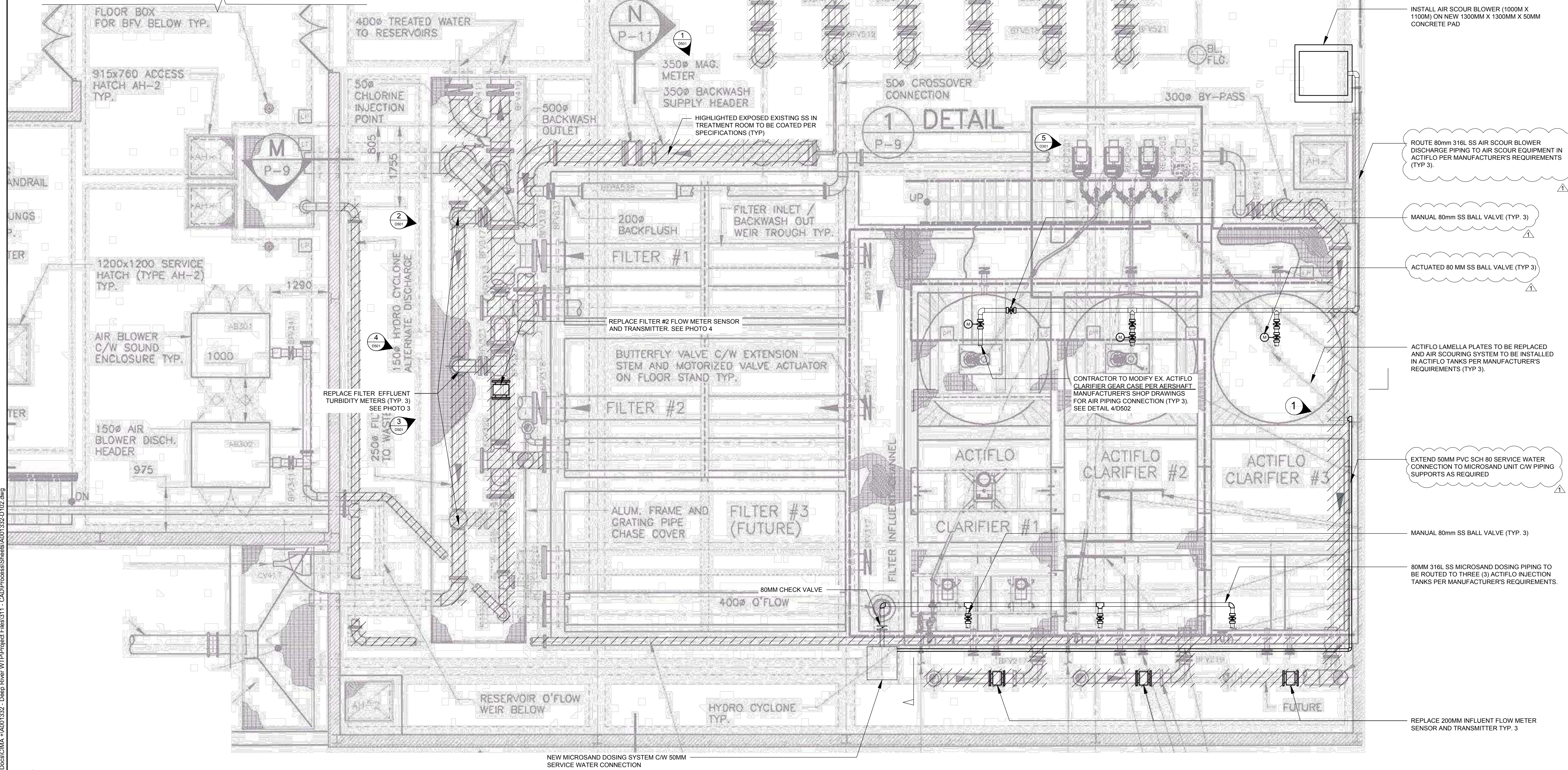
2.4 Question 4: Another question has come up regarding the equipment supplied by Veolia. The tender documents indicate that we are to modify the gear case for the Actiflo Clarifiers but the Veolia drawing package show that modification as well as three complete new scraper assemblies. Can you please confirm that the scraper assemblies are being replaced and are included in Veolia's pre-purchased scope of supply?

Answer 4: Yes, three (3) new Actiflo clarifier scraper mechanisms are included within Veolia's pre-purchased scope of supply, per the shop drawing submission, and the contractor's scope for installation/testing per the manufacturer's requirements.

End of Addendum.



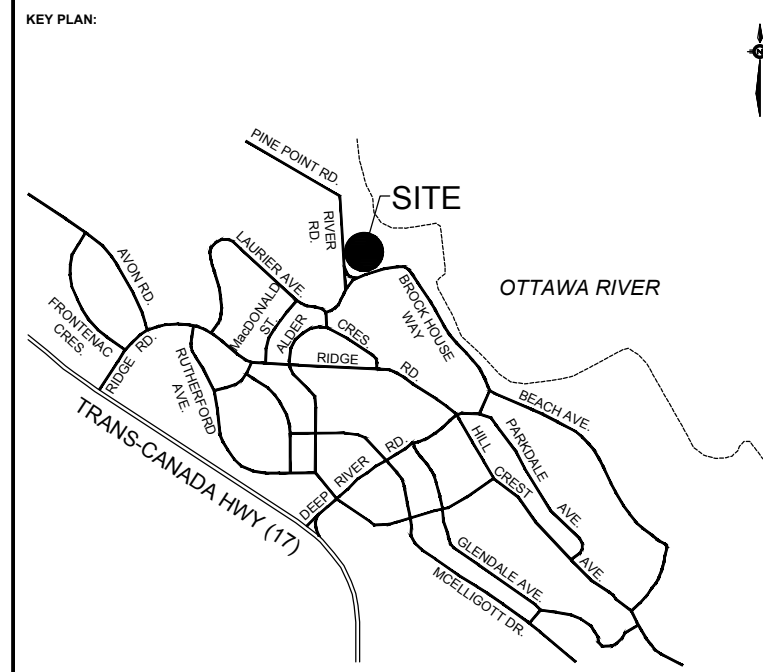
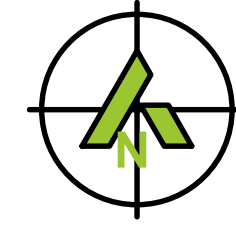
1 PHOTO 1: CONNECTION LOCATION FOR
D102 SCALE: N.T.S. MICROSAND UNIT SERVICE WATER PIPING



NOTE:

/// HIGHLIGHTED EXPOSED EXISTING SS IN TREATMENT ROOM
TO BE COATED PER SPECIFICATIONS (TYP)

2 FLOOR PLAN (2)
SCALE: 1:80



DISCLAIMER:

This drawing has been prepared for the use of CIMA+ 's client and may not be used, reproduced or relied upon by third parties, except as agreed by CIMA+ and its client, as required by law or for use by governmental reviewing agencies. CIMA+ accepts no responsibility, and denies any liability whatsoever, to any party that modifies this drawing without CIMA+ 's express written consent. Do not scale this document. All measurements must be obtained from the stated dimensions.

1	NOV 2025	ISSUED FOR ADDENDUM #4	A.S
0	OCT 2025	ISSUED FOR TENDER	A.S
No.	Date	Description	By

STAMPS:

DESIGNED BY:

APPROVED BY _____

CONSULTANT(S)

ENGINEER



PROJECT NAME-

DEEP RIVER WATER TREATMENT PLANT UPGRADES

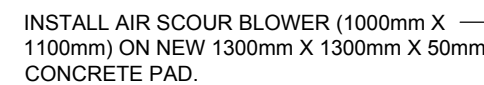
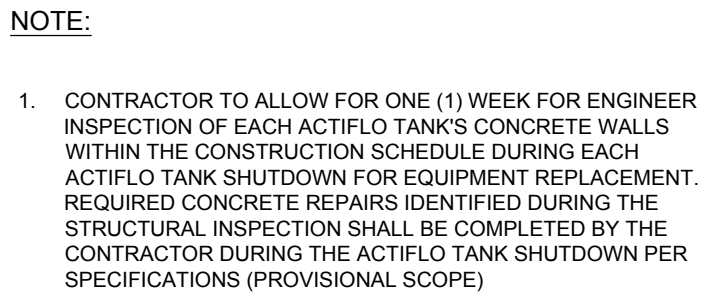
SHEET TITLE:

FLOOR PLAN (2)

DISCIPLINE:

PROCESS

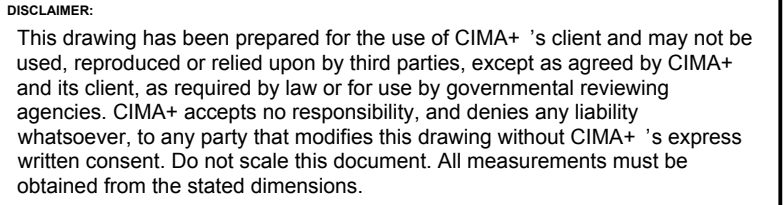
DRAFTER:	N.P.	SCALE:	N.T.S
DESIGNER:	A.S.	DATE:	OCT 2025
APPROVER:	A.S.	CHECKER:	A.S.
PROJECT No:	A001332	DRAWING No:	D-102
SHEET No:	of		



5 PHOTO 5: PROPOSED AIR SCOUR BLOWER
D102 SCALE: N.T.S AND DISCHARGE PIPING INSTALLATION



1 PROPOSED MICROSAND DOSING
LOCATION ADJACENT TO HYDROCYCLONE
SCALE: N.T.S



1	NOV 2025	ISSUED FOR ADDENDUM #4	A.S.
0	OCT 2025	ISSUED FOR TENDER	A.S.
No.	Date	Description	By

STAMPS:

DESIGNED BY

APPROVED BY _____

CONSULTANT(S):

ENGINEER:



PROJECT NAME:

DEEP RIVER WATER TREATMENT PLANT UPGRADES

SHEET TITLE:

SECTION VIEW AND PHOTOS

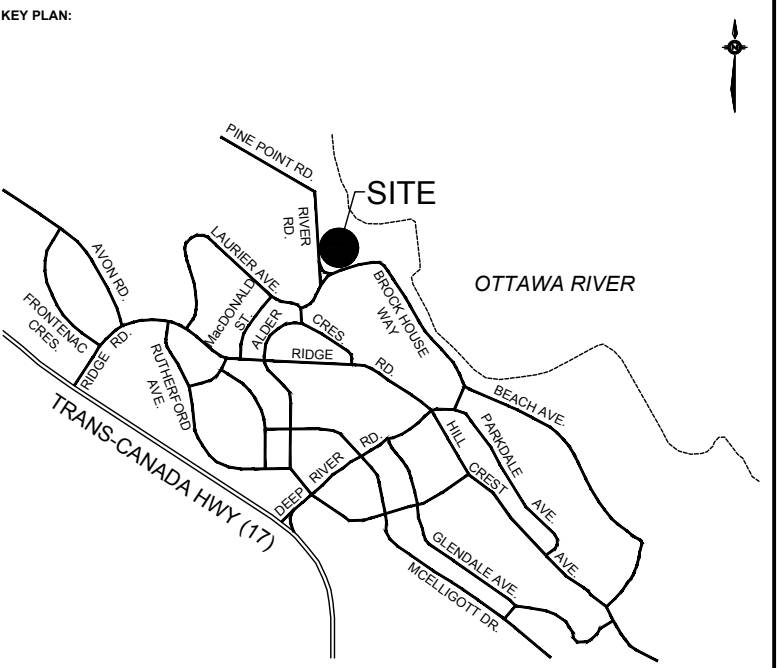
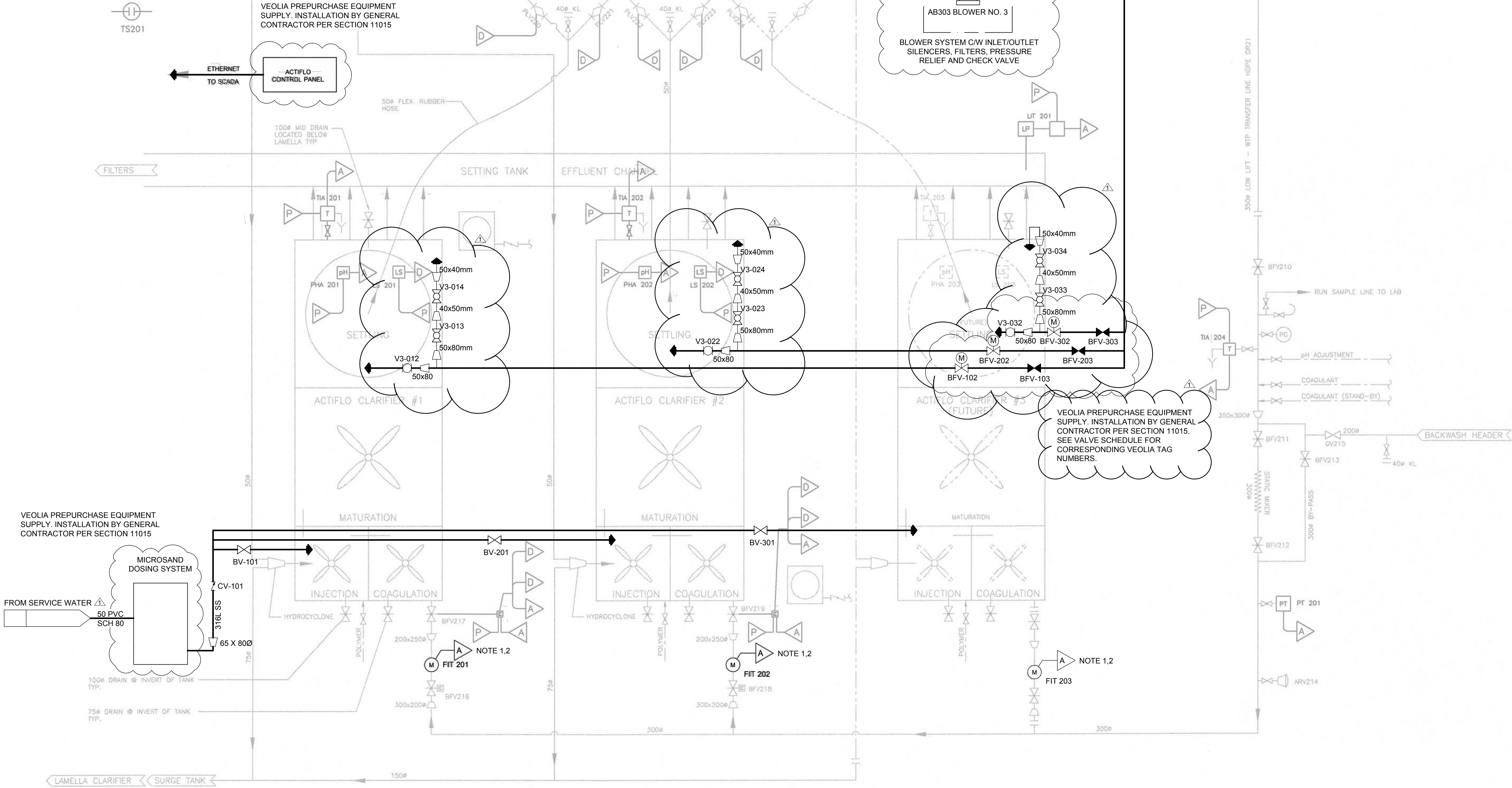
DISCIPLINE:

PROCESS

DRAFTER:	N.P.	SCALE:	N.T.S
DESIGNER:	A.S.	DATE:	OCT 2025
APPROVER:	A.S.	CHECKER:	A.S.
PROJECT No:	A001332	DRAWING No:	D-301
SHEET No:	of		

NOTES:

- RE-UTILIZE EXISTING POWER AND CONTROL WIRING. RE-WORK AND EXTEND CONDUIT AND WIRING AS REQUIRED. IF EXTENDING WIRING, ADD JUNCTION BOX AND USE TERMINAL BLOCKS TO FACILITATE TERMINATION OF WIRING. BUTT SPLICES OR MARRETTES ARE NOT ACCEPTABLE.
- POWERED FROM LP-E.
- CONTROL WIRING CONNECTED TO ACTIFLO PLC PANEL.



DISCLAIMER:
This drawing has been prepared for the use of CIMA+ 's client and may not be used, reproduced or relied upon by third parties, except as agreed by CIMA+ and its client, as required by law or for use by governmental reviewing agencies. CIMA+ accepts no responsibility, and denies any liability whatsoever, to any party that modifies this drawing without CIMA+ 's express written consent. Do not scale this document. All measurements must be obtained from the stated dimensions.

No.	Date	Description	By
1	NOV 2025	ISSUED FOR ADDENDUM #4	A.S.
0	OCT 2025	ISSUED FOR TENDER	A.S.

STAMPS:

DESIGNED BY: APPROVED BY:

CONSULTANT(S):

ENGINEER:



CLIENT:



PROJECT NAME:
DEEP RIVER WATER TREATMENT
PLANT UPGRADES

SHEET TITLE:
PROCESS INSTRUMENTATION
SCHEMATIC CLARIFIERS #1 & #2

DISCIPLINE:
PROCESS

DRAFTER:	N.P.	SCALE:	N.T.S
DESIGNER:	A.S.	DATE:	OCT 2025
APPROVER:	A.S.	CHECKER:	A.S.
PROJECT No:	A001332	DRAWING No:	D-601
SHEET No:	of		

Item	Equipment Tag	Veolia Shop Drawing Equipment Tag	Description	Valve Type (1)	Size (mm)	Service (2)	Specification Sections	Actuator Type (3)	SCADA Monitored?	Drawing No.	Remarks
1	BV-101	N/A	Actiflo #1 Microsand Feeding Isolation Valve	BV	80	ISV	11101	HW	No	D-601	Supplied by Contractor
2	BV-201	N/A	Actiflo #2 Microsand Feeding Isolation Valve	BV	80	ISV	11101	HW	No	D-601	Supplied by Contractor
3	BV-301	N/A	Actiflo #3 Microsand Feeding Isolation Valve	BV	80	ISV	11101	HW	No	D-601	Supplied by Contractor
4	CV-101	N/A	Microsand Feeding Discharge Check Valve	CV	80	CV	11101	N/A	No	D-601	Supplied by Contractor
5	BFV-102	V3-011	Actiflo #1 Air Scour Actuated Isolation Valve	BFV	80	ISV	11101	SE	No	D-601	Supplied by Veolia
6	BFV-103	V8-001	Actiflo #1 Air Scour Manual Isolation Valve	BFV	80	ISV	11101	HW	No	D-601	Supplied by Veolia
7	BFV-202	V3-021	Actiflo #2 Air Scour Actuated Isolation Valve	BFV	80	ISV	11101	SE	No	D-601	Supplied by Veolia
8	BFV-203	V8-002	Actiflo #2 Air Scour Manual Isolation Valve	BFV	80	ISV	11101	HW	No	D-601	Supplied by Veolia
9	BFV-302	V3-031	Actiflo #3 Air Scour Actuated Isolation Valve	BFV	80	ISV	11101	SE	No	D-601	Supplied by Veolia
10	BFV-303	V8-003	Actiflo #3 Air Scour Manual Isolation Valve	BFV	80	ISV	11101	HW	No	D-601	Supplied by Veolia
11	BFV-530	N/A	Treated Water Discharge Isolation Valve	BFV	450	ISV	11101	HW	No	D-603	Supplied by Contractor
12	AMT01_VLV01	N/A	Ammonium Sulphate Storage Tank Discharge Isolation Valve	BV	50	ISV	11540	HW	No	D-606	Supplied by Contractor
13	AMP01_INV01	N/A	Ammonium Sulphate Pump #1 Suction Isolation Valve	BV	50	ISV	11540	HW	No	D-606	Supplied by Contractor
14	AMP01_DSV01	N/A	Ammonium Sulphate Pump #1 Discharge Isolation Valve	BV	50	ISV	11540	HW	No	D-606	Supplied by Contractor
15	AMP02_INV01	N/A	Ammonium Sulphate Pump #2 Suction Isolation Valve	BV	50	ISV	11540	HW	No	D-606	Supplied by Contractor
16	AMP02_DSV01	N/A	Ammonium Sulphate Pump #2 Discharge Isolation Valve	BV	50	ISV	11540	HW	No	D-606	Supplied by Contractor
17	AMP00_PSV01	N/A	Ammonium Sulphate Pump Discharge Pressure Sustaining Valve	PSV	15	PSV	11540	N/A	No	D-606	Supplied by Contractor
18	AMP00_DRV01	N/A	Ammonium Sulphate System Drain Valve	BV	15	DV	11540	HW	No	D-606	Supplied by Contractor
19	V3-012	V3-012	Actiflo #1 Air Scour Manual Isolation Ball Valve 1	BV	50	ISV	11101	HW	No	D-601	Supplied by Veolia
20	V3-013	V3-013	Actiflo #1 Air Scour Manual Isolation Ball Valve 2	BV	50	ISV	11101	HW	No	D-601	Supplied by Veolia
21	V3-014	V3-014	Actiflo #1 Air Scour Manual Isolation Globe Valve	GLV	40	ISV	11101	HW	No	D-601	Supplied by Veolia
22	V3-022	V3-022	Actiflo #2 Air Scour Manual Isolation Ball Valve 1	BV	50	ISV	11101	HW	No	D-601	Supplied by Veolia
23	V3-023	V3-023	Actiflo #2 Air Scour Manual Isolation Ball Valve 2	BV	50	ISV	11101	HW	No	D-601	Supplied by Veolia
24	V3-024	V3-024	Actiflo #2 Air Scour Manual Isolation Globe Valve	GLV	40	ISV	11101	HW	No	D-601	Supplied by Veolia
25	V3-032	V3-032	Actiflo #3 Air Scour Manual Isolation Ball Valve 1	BV	50	ISV	11101	HW	No	D-601	Supplied by Veolia
26	V3-033	V3-033	Actiflo #3 Air Scour Manual Isolation Ball Valve 2	BV	50	ISV	11101	HW	No	D-601	Supplied by Veolia
27	V3-034	V3-034	Actiflo #3 Air Scour Manual Isolation Globe Valve	GLV	40	ISV	11101	HW	No	D-601	Supplied by Veolia

Notes:

1) Valve type:

BV	Ball Valve
BFV	Butterfly Valve
CV	Check Valve
KGV	Knife Gate Valve
GV	Gate Valve
PRV	Pressure Relief Valve
ARV	Air Relief Valve
PSV	Pressure Sustaining Valve
GLV	Globe Valve

2) Service:

ISV	Isolation Valve
CV	Check Valve
MOV	Motorized Valve
RV	Relief Valve
PSV	Pressure Sustaining Valve
DV	Drain Valve

3) Actuator:

Related Section 11290 for Electric

HW	Hand Wheel Actuator
SE	Standard Electric Actuator
ME	Modulating Electric Actuator

Item	Field Device Tag No.	Veolia Shop Drawing Tag No.	Connected to PLC #	Device Type	Service Description	ICP / Controller	Input Type	Output Type	Power	P&I Drawing	Specification	Remarks
1	FIT-201	N/A	Actiflo PLC (Tag# FIT1-011)	Magnetic Flow Meter and Transmitter	Actiflo #1 Influent Flow Meter	RPU	Analog 4-20mA - Flow Indication Digital - General Alarm	N/A	120VAC, 60Hz, 36VA	D-601	13566	Supplied by Contractor
2	FIT-202	N/A	Actiflo PLC (Tag# FIT1-021)	Magnetic Flow Meter and Transmitter	Actiflo #2 Influent Flow Meter	RPU	Analog 4-20mA - Flow Indication Digital - General Alarm	N/A	120VAC, 60Hz, 36VA	D-601	13566	Supplied by Contractor
3	FIT-203	N/A	Actiflo PLC (Tag# FIT1-031)	Magnetic Flow Meter and Transmitter	Actiflo #3 Influent Flow Meter	RPU	Analog 4-20mA - Flow Indication Digital - General Alarm	N/A	120VAC, 60Hz, 36VA	D-601	13566	Supplied by Contractor
4	FIT-302	N/A	PLC1	Magnetic Flow Meter and Transmitter	Filter #2 Effluent Flow Meter	RPU	Analog 4-20mA - Flow Indication	N/A	120VAC, 60Hz, 36VA	D-602	13566	Supplied by Contractor
5	TIA-301	N/A	PLC1	Turbidity Meter and Controller	Filter #1 Turbidity Meter	RPU	Analog 4-20mA - Turbidity Level	N/A	120 VAC, 60 Hz, 24 VDC	D-602	13565	Supplied by Contractor
6	TIA-302	N/A	PLC1	Turbidity Meter and Controller	Filter #2 Turbidity Meter	RPU	Analog 4-20mA - Turbidity Level	N/A	120 VAC, 60 Hz, 24 VDC	D-602	13565	Supplied by Contractor
7	TIA-303	N/A	PLC1	Turbidity Meter and Controller	Filter #3 Turbidity Meter	RPU	Analog 4-20mA - Turbidity Level	N/A	120 VAC, 60 Hz, 24 VDC	D-602	13565	Supplied by Contractor
8	CIA-502	N/A	PLC1 (Tag# CIA-502) - Existing Instrument to remain	Free Chlorine Analyzer	Clearwell Discharge	RPU	Analog 4-20mA - Chlorine Residual Digital - General Alarm	N/A	120 VAC, 60 Hz, 24 VDC	D-603	13567	Existing instrument sample location to be relocated by Contractor
9	CIA-501	N/A	N/A - new instrument	Total Chlorine Analyzer	Treated Water Discharge Header	RPU	Analog 4-20mA - Chlorine Residual Digital - General Alarm	N/A	120 VAC, 60 Hz, 24 VDC	D-603	13567	Supplied by Contractor
10	LIT-709	LT 9-521	N/A - new instrument	Ultrasonic Level Sensor/Transmitter	Actiflo Polymer Maturation Tank Level Indication	RPU	Analog 4-20mA - Level Indication Digital - General Alarm	N/A	120 VAC, 60 Hz, 24 VDC	D-604	13563	Supplied by Veolia
11	LIT-710	LT 9-522	N/A - new instrument	Ultrasonic Level Sensor/Transmitter	Actiflo Polymer Storage Tank Level Indication	RPU	Analog 4-20mA - Level Indication Digital - General Alarm	N/A	120 VAC, 60 Hz, 24 VDC	D-604	13563	Supplied by Veolia
12	LSL-701	PSLL 9-521 / PG 62-01	N/A - new instrument	Low Level Switch	Actiflo Polymer Service Water Inlet Low Level Switch	RPU	Digital - Low Level Alarm	N/A	120 VAC, 60 Hz, 24 VDC	D-604	13563	Supplied by Veolia
13	LSL-702	LSL 9-521	N/A - new instrument	Low Level Switch	Actiflo Polymer Hopper Low Level Switch	RPU	Digital - Low Level Alarm	N/A	120 VAC, 60 Hz, 24 VDC	D-604	13563	Supplied by Veolia
14	AMT01-LI01	N/A	N/A - new instrument	Ultrasonic Level Sensor/Transmitter	Ammonium Sulphate Storage Tank Level Indication	RPU	Analog 4-20mA - Level Indication Digital - General Alarm	N/A	120 VAC, 60 Hz, 24 VDC	D-606	13563	Supplied by Contractor
15	AMP01_PI	N/A	N/A - new instrument	Pressure Gauge	Ammonium Sulphate Pump #1 Discharge Pressure Gauge	N/A	N/A	N/A	N/A	D-606	13563	Supplied by Contractor
16	AMP02_PI	N/A	N/A - new instrument	Pressure Gauge	Ammonium Sulphate Pump #2 Discharge Pressure Gauge	N/A	N/A	N/A	N/A	D-606	13563	Supplied by Contractor
17	AMP_FIT01	N/A	N/A - new instrument	Magnetic Flow Meter and Transmitter	Ammonium Sulphate Discharge Flow Indication	RPU	Analog 4-20mA - Flow Indication Digital - General Alarm	N/A	120VAC, 60Hz, 36VA	D-606	13566	Supplied by Contractor
18	AMT_LSH1	N/A	N/A - new instrument	Spill Detection Level Sensor/Transmitter	Ammonium Sulphate Secondary Containment Spill Detection	RPU	Digital - Spill Detection	N/A	120 VAC, 60 Hz, 24 VDC	D-606	13563	Supplied by Contractor

Note: The Contract Drawings shall take precedence if there is any discrepancy between drawings and instrument schedules.