



Date: Wednesday, November 26, 2025

Town of Deep River

100 Deep River Road, P.O Box 400, Deep River, ON K0J 1P0

www.deepriver.ca

Addendum #6

**Bid Opportunity: 2025-RFT-001 Deep River Water
Treatment Plant Upgrades**

**Question Deadline:
Thursday, November 27, 2025**

**Closing Date:
Monday, December 1, 2025 by 13:30:00 EST**

This Addendum will form part of the RFT document.

In the event of any conflicting or inconsistent information, this addendum will take precedence over all requirements of the original RFT document, and any addenda issued previously.

All other requirements of the RFT document remain the same.

Bidders must acknowledge receipt of this addendum, in the field requested, when submitting their bid.

PART 1 – ATTACHMENTS:

1.1 Existing Veolia Actiflo PLC Panel Drawings


PART 2 – BIDDER'S QUESTIONS:

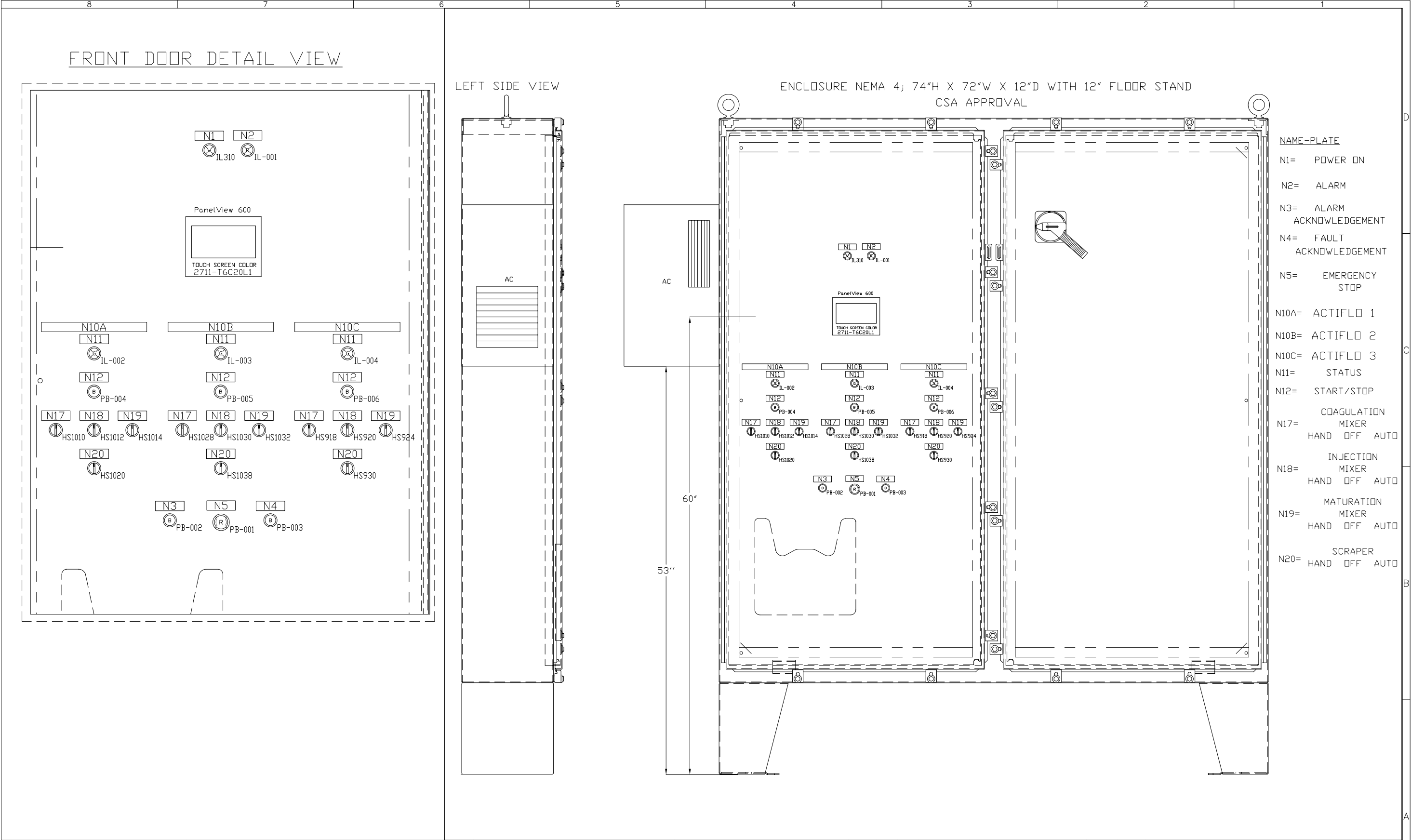
2.1 Question 1: We have requested the original Actiflo panel drawings and the new VEOLIA ACTIFLO Panel drawings so we can confirm scope of work to either replace panel in same location or relocate to new area.

Answer 1: See attached as noted in Item 1.1 for the existing Veolia Actiflo PLC panel drawings.

End of Addendum.

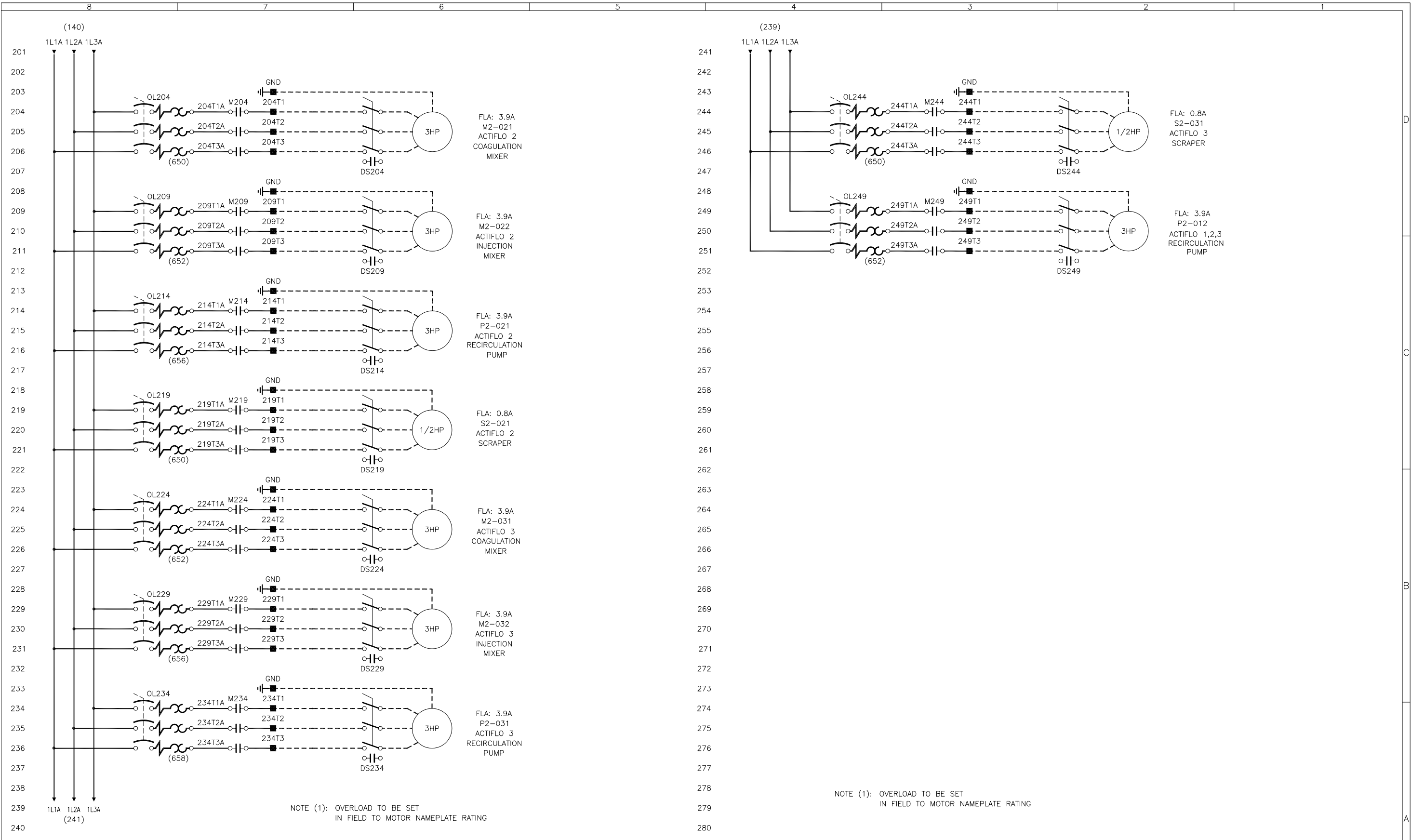
DEEP RIVER (ONT.)
E501
CONTROL PANEL

CADRE_GENICO_JMI_24X36.DWG	INTL REF:	<div><div>CONTRÔLES RL</div><div>894, BERLIER, LAVAL (QUÉBEC) H7L 4K5</div><div>www.controlesrl.com</div><div>REF. CONTROLES RL:</div><div>077751</div></div>										<div>CONFIDENTIALITY AND INTELLECTUAL PROPERTY NOTICE</div> <div>ALL INFORMATION CONTAINED IN THIS DOCUMENT IS THE SOLE PROPERTY OF JOHN MEUNIER INC. AND IS PROTECTED BY ALL APPLICABLE LAWS, INCLUDING BUT NOT LIMITED TO COPYRIGHT AND OTHER INTELLECTUAL PROPERTY LAWS. THE DESIGN CONCEPTS AND INFORMATION CONTAINED HEREIN ARE PROPRIETARY TO JMI AND ARE SUBMITTED IN CONFIDENCE. THEY ARE NOT TO BE REPRODUCED, COPIED, OR IN ANY MANNER DISCLOSED TO ANY OTHER PARTY WITHOUT THE EXPRESS WRITTEN CONSENT OF JMI. ANY REUSE OR REPRODUCTION OF THIS DOCUMENT FOR ANY OTHER PROJECT, OR IN ANY MANNER THAT DOES NOT RELATE TO THE PROJECT OR PURPOSE OF THIS DOCUMENT, IS STRICTLY PROHIBITED. ACCEPTANCE OF THE DELIVERY OF THIS DOCUMENT CONSTITUTES AGREEMENT TO THESE TERMS AND CONDITIONS.</div>	DESIGNER M.MERARTI	DATE 06-07-26	TITLE FRONT PAGE			
			CHECKER	DATE	CLIENT DEEP RIVER (ONT.) ACTIFLO E501													
			ENGINEER	DATE	PROJECT E501													
			MANAGER	DATE	CODE 000	DRAWING E00	SHEET 01 OF 01	REV C										

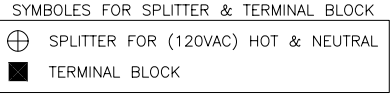


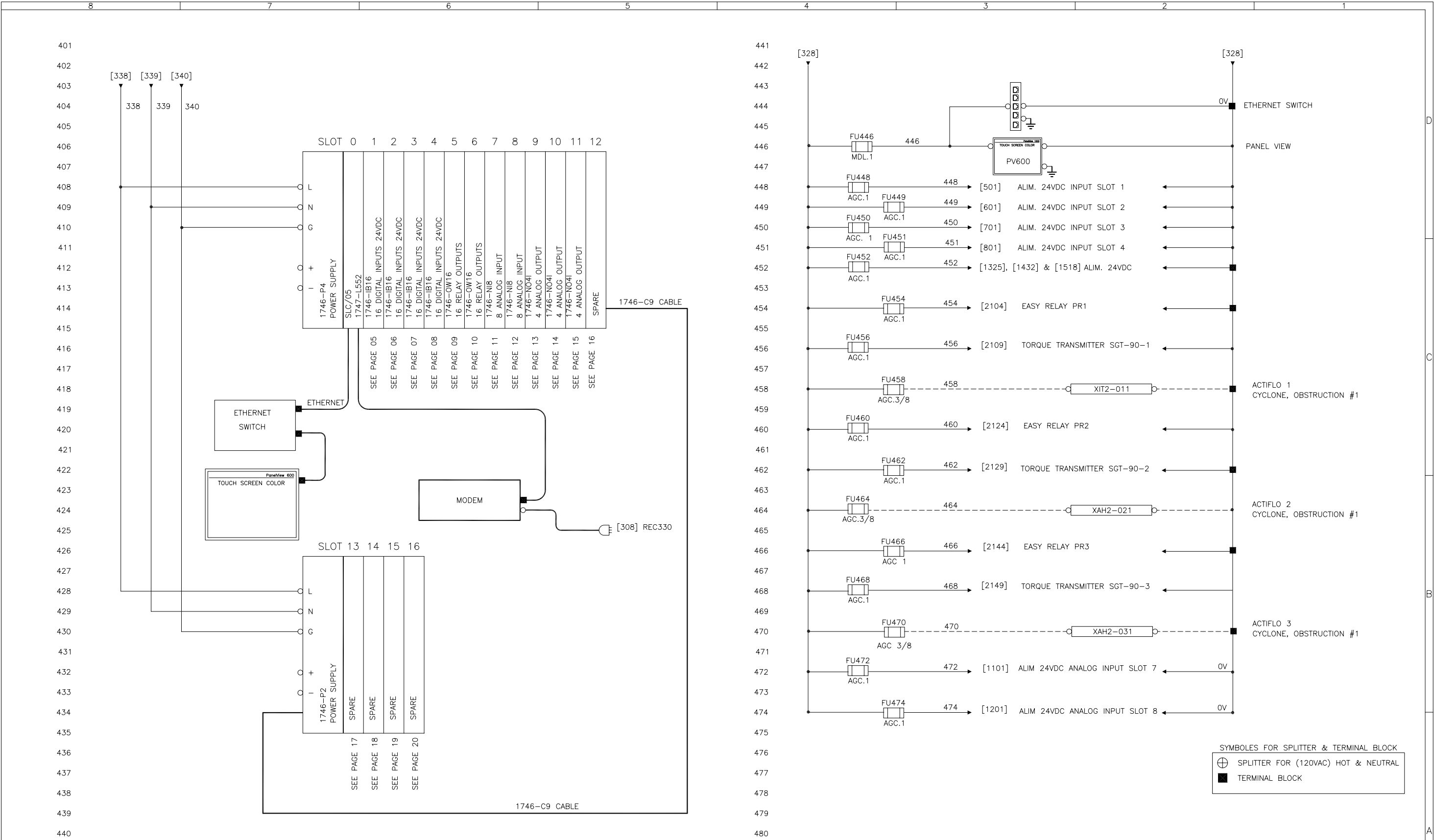
CADRE_GENICO_JMI_24X36.DWG		INTL REF:		<div><div><div></div></div><div>CONTRÔLES RL</div><div>894, BERLIER, LAVAL (QUÉBEC) H7L 4K5 www.controlesrl.com</div><div>REF. CONTROLES RL: 077751</div></div>		<table><tr><th>REV</th><th>DESCRIPTION</th><th>DATE</th><th>DWN</th><th>CHKD</th><th>APVD</th><th>ECN</th></tr><tr><td>D</td><td>AS BUILT</td><td>06-09-27</td><td>M.M</td><td></td><td></td><td></td></tr><tr><td>C</td><td>FOR CONSTRUCTION</td><td>06-08-17</td><td>M.M</td><td>BB</td><td></td><td></td></tr><tr><td>B</td><td>ADDITION OF SCRAPER SELECTOR – FOR APPROVAL</td><td>06-07-31</td><td>BD</td><td></td><td></td><td></td></tr><tr><td>A</td><td>ISSUED FOR APPROVAL</td><td>06-07-26</td><td>M.M.</td><td>B.D</td><td></td><td></td></tr></table>		REV	DESCRIPTION	DATE	DWN	CHKD	APVD	ECN	D	AS BUILT	06-09-27	M.M				C	FOR CONSTRUCTION	06-08-17	M.M	BB			B	ADDITION OF SCRAPER SELECTOR – FOR APPROVAL	06-07-31	BD				A	ISSUED FOR APPROVAL	06-07-26	M.M.	B.D			<div><div>CONFIDENTIALITY AND INTELLECTUAL PROPERTY NOTICE</div><div>ALL INFORMATION CONTAINED IN THIS DOCUMENT IS THE SOLE PROPERTY OF JOHN MEUNIER INC. AND IS PROTECTED BY ALL APPLICABLE LAWS, INCLUDING BUT NOT LIMITED TO COPYRIGHT AND OTHER INTELLECTUAL PROPERTY LAWS. THE DESIGN CONCEPTS AND INFORMATION CONTAINED HEREIN ARE PROPRIETARY TO JMI AND ARE SUBMITTED IN CONFIDENCE. THEY ARE NOT TRANSFERABLE. THEY MUST BE USED ONLY FOR THE PURPOSE FOR WHICH THE DOCUMENT IS EXPRESSLY SUBMITTED AND NO IMPLICIT LICENSE IS GRANTED OTHERWISE BY THE SUBMISSION OF THIS DOCUMENT. THEY ARE CONFIDENTIAL AND PRIVILEGED INFORMATION OF JMI AND THEY MUST NOT BE DISCLOSED, REPRODUCED, LOANED, REMITTED OR USED IN ANY OTHER MANNER WITHOUT THE EXPRESS WRITTEN CONSENT OF JMI. JMI ASSUMES NO RESPONSIBILITY OR LIABILITY FOR THE USE OF THIS DOCUMENT FOR ANY OTHER PROJECT, OR IN A MANNER THAT DOES NOT RELATE TO THE FITNESS OR PURPOSE OF THIS DOCUMENT. IN NO CASE SHALL THIS DOCUMENT OR THE DESIGN CONCEPTS AND INFORMATION CONTAINED HEREIN BE USED IN A MANNER DENIMING TO THE INTERESTS OF JMI. ALL COPYRIGHT, PATENT AND OTHER INTELLECTUAL PROPERTY RIGHTS ARE RESERVED. ACCEPTANCE OF THE DELIVERY OF THIS DOCUMENT CONSTITUTES AGREEMENT TO THESE TERMS AND CONDITIONS.</div><div><div>DESIGNER</div><div>M.MERABTI</div><div>DATE</div><div>06-07-26</div><div>CHECKER</div><div></div><div>DATE</div><div></div><div>ENGINEER</div><div></div><div>DATE</div><div></div><div>MANAGER</div><div></div><div>DATE</div><div></div><div>FILE:</div><div>06093-000-ED1-001-B</div><div>SCALE:</div><div>N/A</div></div></div>		<table><tr><td colspan="2">TITLE</td><td colspan="2">CONTROL PANEL ENCLOSURE LAYOUT</td></tr><tr><td colspan="2">CLIENT</td><td colspan="2">DEEP RIVER (ONT.) ACTIFLO E501</td></tr><tr><td colspan="2">PROJECT</td><td>CODE</td><td>DRAWING</td></tr><tr><td colspan="2">E501</td><td>001</td><td>E02</td></tr><tr><td colspan="2">SHEET</td><td>01 OF 01</td><td>REV</td></tr><tr><td colspan="2"></td><td></td><td>D</td></tr></table>		TITLE		CONTROL PANEL ENCLOSURE LAYOUT		CLIENT		DEEP RIVER (ONT.) ACTIFLO E501		PROJECT		CODE	DRAWING	E501		001	E02	SHEET		01 OF 01	REV				D
REV	DESCRIPTION	DATE	DWN	CHKD	APVD	ECN																																																																
D	AS BUILT	06-09-27	M.M																																																																			
C	FOR CONSTRUCTION	06-08-17	M.M	BB																																																																		
B	ADDITION OF SCRAPER SELECTOR – FOR APPROVAL	06-07-31	BD																																																																			
A	ISSUED FOR APPROVAL	06-07-26	M.M.	B.D																																																																		
TITLE		CONTROL PANEL ENCLOSURE LAYOUT																																																																				
CLIENT		DEEP RIVER (ONT.) ACTIFLO E501																																																																				
PROJECT		CODE	DRAWING																																																																			
E501		001	E02																																																																			
SHEET		01 OF 01	REV																																																																			
			D																																																																			

8										7										6										5										4										3										2										1																																																																																																																																																																																																																																																																																																																																																																																																																																																																																																																																								
PART LIST																																																																																																																																																																																																																																																																																																																																																																																																																																																																																																																																																																																																														
<table><tr><th>N.</th><th>DESCRIPTION</th><th>MANUFACTURER</th><th>CATALOGUE N#</th></tr><tr><td></td><td>NEMA 4 FLOOR MOUNT PANEL, 2DOOR, LIFTING HOOKS, PAINTED STEEL, WITH PANEL MOUNT</td><td>HOFFMAN</td><td>A74H72DULP /A72P72</td></tr><tr><td>ZS306</td><td>DOOR SWITCH</td><td>TELEMECANIQUE</td><td>XCKP102</td></tr><tr><td>MCB105</td><td>CIRCUIT BREAKER WITH FUSES AJT-80, SAFT 194R-R4 AND DP. HANDLES 194R-HM4E</td><td>ALLEN BRADLEY</td><td>194R-NJ100P3</td></tr><tr><td>SP110A</td><td>SPLITTER</td><td>ALLEN BRADLEY</td><td>1492-PD3263</td></tr><tr><td>SP110B</td><td>SPLITTER</td><td>ALLEN BRADLEY</td><td>1492-PD3263</td></tr><tr><td>SP110C</td><td>SPLITTER</td><td>ALLEN BRADLEY</td><td>1492-PD3263</td></tr><tr><td>T114</td><td>TRANSFORMER 600VAC/120VAC, 3KVA.</td><td>TRANSFAB</td><td>DD3000QH</td></tr><tr><td>SP246</td><td>SPLITTER</td><td>ALLEN BRADLEY</td><td>1492-PD3141</td></tr><tr><td>F152</td><td>FUSEBLOC 3P WITH FUSES LPJ-10SP</td><td>ALLEN BRADLEY</td><td>1492-PDM3141</td></tr><tr><td>F163</td><td>FUSEBLOC 3P WITH FUSES LPJ-10SP</td><td>ALLEN BRADLEY</td><td>1492-PDM3141</td></tr><tr><td>F174</td><td>FUSEBLOC 3P WITH FUSES LPJ-10SP</td><td>ALLEN BRADLEY</td><td>1492-PDM3141</td></tr><tr><td>F112</td><td>FUSEBLOC 2P. WITH FUSES ATQR-12</td><td>GOULD</td><td>USCC1</td></tr><tr><td>CB114</td><td>CIRCUIT BREAKER 2P.15A</td><td>ALLEN BRADLEY</td><td>1492-CB2G150</td></tr><tr><td>CB113</td><td>CIRCUIT BREAKER 2P. 5A.</td><td>ALLEN BRADLEY</td><td>1492-CB2G050</td></tr><tr><td>OL119</td><td>CONTACTOR, 3Ph, 9A MAX, 120VAC, 60Hz, CONT.IND</td><td>ALLEN BRADLEY</td><td>100-C09D10</td></tr><tr><td>OL124</td><td>CONTACTOR, 3Ph, 9A MAX, 120VAC, 60Hz, CONT.IND</td><td>ALLEN BRADLEY</td><td>100-C09D10</td></tr><tr><td>OL129</td><td>CONTACTOR, 3Ph, 9A MAX, 120VAC, 60Hz, CONT.IND</td><td>ALLEN BRADLEY</td><td>100-C09D10</td></tr><tr><td>OL134</td><td>CONTACTOR, 3Ph, 9A MAX, 120VAC, 60Hz, CONT.IND</td><td>ALLEN BRADLEY</td><td>100-C09D10</td></tr><tr><td>OL204</td><td>CONTACTOR, 3Ph, 9A MAX, 120VAC, 60Hz, CONT.IND</td><td>ALLEN BRADLEY</td><td>100-C09D10</td></tr><tr><td>OL209</td><td>CONTACTOR, 3Ph, 9A MAX, 120VAC, 60Hz, CONT.IND</td><td>ALLEN BRADLEY</td><td>100-C09D10</td></tr><tr><td>OL214</td><td>CONTACTOR, 3Ph, 9A MAX, 120VAC, 60Hz, CONT.IND</td><td>ALLEN BRADLEY</td><td>100-C09D10</td></tr><tr><td>OL219</td><td>CONTACTOR, 3Ph, 9A MAX, 120VAC, 60Hz, CONT.IND</td><td>ALLEN BRADLEY</td><td>100-C09D10</td></tr><tr><td>OL224</td><td>CONTACTOR, 3Ph, 9A MAX, 120VAC, 60Hz, CONT.IND</td><td>ALLEN BRADLEY</td><td>100-C09D10</td></tr><tr><td>OL229</td><td>CONTACTOR, 3Ph, 9A MAX, 120VAC, 60Hz, CONT.IND</td><td>ALLEN BRADLEY</td><td>100-C09D10</td></tr><tr><td>OL234</td><td>CONTACTOR, 3Ph, 9A MAX, 120VAC, 60Hz, CONT.IND</td><td>ALLEN BRADLEY</td><td>100-C09D10</td></tr><tr><td>OL244</td><td>CONTACTOR, 3Ph, 9A MAX, 120VAC, 60Hz, CONT.IND</td><td>ALLEN BRADLEY</td><td>100-C09D10</td></tr><tr><td>OL249</td><td>CONTACTOR, 3Ph, 9A MAX, 120VAC, 60Hz, CONT.IND</td><td>ALLEN BRADLEY</td><td>100-C09D10</td></tr><tr><td>MC315</td><td>MCS-C Contactor, IEC 30A, 120Vac coil c/a IND</td><td>ALLEN BRADLEY</td><td>100-C30D10</td></tr><tr><td>M119</td><td>CONTACTOR, 3Ph, 9A MAX, 120VAC, 60Hz, CONT.IND</td><td>ALLEN BRADLEY</td><td>140M-D8N-B40</td></tr><tr><td>M124</td><td>CONTACTOR, 3Ph, 9A MAX, 120VAC, 60Hz, CONT.IND</td><td>ALLEN BRADLEY</td><td>140M-D8N-B40</td></tr><tr><td>M129</td><td>CONTACTOR, 3Ph, 9A MAX, 120VAC, 60Hz, CONT.IND</td><td>ALLEN BRADLEY</td><td>140M-D8N-B40</td></tr><tr><td>M134</td><td>CONTACTOR, 3Ph, 9A MAX, 120VAC, 60Hz, CONT.IND</td><td>ALLEN BRADLEY</td><td>140M-C2N-B10</td></tr><tr><td>M204</td><td>CONTACTOR, 3Ph, 9A MAX, 120VAC, 60Hz, CONT.IND</td><td>ALLEN BRADLEY</td><td>140M-D8N-B40</td></tr><tr><td>M209</td><td>CONTACTOR, 3Ph, 9A MAX, 120VAC, 60Hz, CONT.IND</td><td>ALLEN BRADLEY</td><td>140M-D8N-B40</td></tr><tr><td>M214</td><td>CONTACTOR, 3Ph, 9A MAX, 120VAC, 60Hz, CONT.IND</td><td>ALLEN BRADLEY</td><td>140M-D8N-B40</td></tr><tr><td>M219</td><td>CONTACTOR, 3Ph, 9A MAX, 120VAC, 60Hz, CONT.IND</td><td>ALLEN BRADLEY</td><td>140M-C2N-B10</td></tr><tr><td>M224</td><td>CONTACTOR, 3Ph, 9A MAX, 120VAC, 60Hz, CONT.IND</td><td>ALLEN BRADLEY</td><td>140M-D8N-B40</td></tr><tr><td>M229</td><td>CONTACTOR, 3Ph, 9A MAX, 120VAC, 60Hz, CONT.IND</td><td>ALLEN BRADLEY</td><td>140M-D8N-B40</td></tr><tr><td>M234</td><td>CONTACTOR, 3Ph, 9A MAX, 120VAC, 60Hz, CONT.IND</td><td>ALLEN BRADLEY</td><td>140M-D8N-B40</td></tr><tr><td>M244</td><td>CONTACTOR, 3Ph, 9A MAX, 120VAC, 60Hz, CONT.IND</td><td>ALLEN BRADLEY</td><td>140M-C2N-B10</td></tr><tr><td>M249</td><td>CONTACTOR, 3Ph, 9A MAX, 120VAC, 60Hz, CONT.IND</td><td>ALLEN BRADLEY</td><td>140M-D8N-B40</td></tr><tr><td>FL152A</td><td>LINE REACTOR, 3ph, 600VAC, 5HP, 5%</td><td>ALLEN BRADLEY</td><td>TCIKDRB45H</td></tr><tr><td>FL163A</td><td>LINE REACTOR, 3ph, 600VAC, 5HP, 5%</td><td>ALLEN BRADLEY</td><td>TCIKDRB45H</td></tr><tr><td>FL174A</td><td>LINE REACTOR, 3ph, 600VAC, 5HP, 5%</td><td>ALLEN BRADLEY</td><td>TCIKDRB45H</td></tr><tr><td>FL152B</td><td>LINE REACTOR, 3ph, 600VAC, 5HP, 3%</td><td>ALLEN BRADLEY</td><td>TCIKDRB42H</td></tr><tr><td>FL163B</td><td>LINE REACTOR, 3ph, 600VAC, 5HP, 3%</td><td>ALLEN BRADLEY</td><td>TCIKDRB42H</td></tr></table>																																																																																																				N.	DESCRIPTION	MANUFACTURER	CATALOGUE N#		NEMA 4 FLOOR MOUNT PANEL, 2DOOR, LIFTING HOOKS, PAINTED STEEL, WITH PANEL MOUNT	HOFFMAN	A74H72DULP /A72P72	ZS306	DOOR SWITCH	TELEMECANIQUE	XCKP102	MCB105	CIRCUIT BREAKER WITH FUSES AJT-80, SAFT 194R-R4 AND DP. HANDLES 194R-HM4E	ALLEN BRADLEY	194R-NJ100P3	SP110A	SPLITTER	ALLEN BRADLEY	1492-PD3263	SP110B	SPLITTER	ALLEN BRADLEY	1492-PD3263	SP110C	SPLITTER	ALLEN BRADLEY	1492-PD3263	T114	TRANSFORMER 600VAC/120VAC, 3KVA.	TRANSFAB	DD3000QH	SP246	SPLITTER	ALLEN BRADLEY	1492-PD3141	F152	FUSEBLOC 3P WITH FUSES LPJ-10SP	ALLEN BRADLEY	1492-PDM3141	F163	FUSEBLOC 3P WITH FUSES LPJ-10SP	ALLEN BRADLEY	1492-PDM3141	F174	FUSEBLOC 3P WITH FUSES LPJ-10SP	ALLEN BRADLEY	1492-PDM3141	F112	FUSEBLOC 2P. WITH FUSES ATQR-12	GOULD	USCC1	CB114	CIRCUIT BREAKER 2P.15A	ALLEN BRADLEY	1492-CB2G150	CB113	CIRCUIT BREAKER 2P. 5A.	ALLEN BRADLEY	1492-CB2G050	OL119	CONTACTOR, 3Ph, 9A MAX, 120VAC, 60Hz, CONT.IND	ALLEN BRADLEY	100-C09D10	OL124	CONTACTOR, 3Ph, 9A MAX, 120VAC, 60Hz, CONT.IND	ALLEN BRADLEY	100-C09D10	OL129	CONTACTOR, 3Ph, 9A MAX, 120VAC, 60Hz, CONT.IND	ALLEN BRADLEY	100-C09D10	OL134	CONTACTOR, 3Ph, 9A MAX, 120VAC, 60Hz, CONT.IND	ALLEN BRADLEY	100-C09D10	OL204	CONTACTOR, 3Ph, 9A MAX, 120VAC, 60Hz, CONT.IND	ALLEN BRADLEY	100-C09D10	OL209	CONTACTOR, 3Ph, 9A MAX, 120VAC, 60Hz, CONT.IND	ALLEN BRADLEY	100-C09D10	OL214	CONTACTOR, 3Ph, 9A MAX, 120VAC, 60Hz, CONT.IND	ALLEN BRADLEY	100-C09D10	OL219	CONTACTOR, 3Ph, 9A MAX, 120VAC, 60Hz, CONT.IND	ALLEN BRADLEY	100-C09D10	OL224	CONTACTOR, 3Ph, 9A MAX, 120VAC, 60Hz, CONT.IND	ALLEN BRADLEY	100-C09D10	OL229	CONTACTOR, 3Ph, 9A MAX, 120VAC, 60Hz, CONT.IND	ALLEN BRADLEY	100-C09D10	OL234	CONTACTOR, 3Ph, 9A MAX, 120VAC, 60Hz, CONT.IND	ALLEN BRADLEY	100-C09D10	OL244	CONTACTOR, 3Ph, 9A MAX, 120VAC, 60Hz, CONT.IND	ALLEN BRADLEY	100-C09D10	OL249	CONTACTOR, 3Ph, 9A MAX, 120VAC, 60Hz, CONT.IND	ALLEN BRADLEY	100-C09D10	MC315	MCS-C Contactor, IEC 30A, 120Vac coil c/a IND	ALLEN BRADLEY	100-C30D10	M119	CONTACTOR, 3Ph, 9A MAX, 120VAC, 60Hz, CONT.IND	ALLEN BRADLEY	140M-D8N-B40	M124	CONTACTOR, 3Ph, 9A MAX, 120VAC, 60Hz, CONT.IND	ALLEN BRADLEY	140M-D8N-B40	M129	CONTACTOR, 3Ph, 9A MAX, 120VAC, 60Hz, CONT.IND	ALLEN BRADLEY	140M-D8N-B40	M134	CONTACTOR, 3Ph, 9A MAX, 120VAC, 60Hz, CONT.IND	ALLEN BRADLEY	140M-C2N-B10	M204	CONTACTOR, 3Ph, 9A MAX, 120VAC, 60Hz, CONT.IND	ALLEN BRADLEY	140M-D8N-B40	M209	CONTACTOR, 3Ph, 9A MAX, 120VAC, 60Hz, CONT.IND	ALLEN BRADLEY	140M-D8N-B40	M214	CONTACTOR, 3Ph, 9A MAX, 120VAC, 60Hz, CONT.IND	ALLEN BRADLEY	140M-D8N-B40	M219	CONTACTOR, 3Ph, 9A MAX, 120VAC, 60Hz, CONT.IND	ALLEN BRADLEY	140M-C2N-B10	M224	CONTACTOR, 3Ph, 9A MAX, 120VAC, 60Hz, CONT.IND	ALLEN BRADLEY	140M-D8N-B40	M229	CONTACTOR, 3Ph, 9A MAX, 120VAC, 60Hz, CONT.IND	ALLEN BRADLEY	140M-D8N-B40	M234	CONTACTOR, 3Ph, 9A MAX, 120VAC, 60Hz, CONT.IND	ALLEN BRADLEY	140M-D8N-B40	M244	CONTACTOR, 3Ph, 9A MAX, 120VAC, 60Hz, CONT.IND	ALLEN BRADLEY	140M-C2N-B10	M249	CONTACTOR, 3Ph, 9A MAX, 120VAC, 60Hz, CONT.IND	ALLEN BRADLEY	140M-D8N-B40	FL152A	LINE REACTOR, 3ph, 600VAC, 5HP, 5%	ALLEN BRADLEY	TCIKDRB45H	FL163A	LINE REACTOR, 3ph, 600VAC, 5HP, 5%	ALLEN BRADLEY	TCIKDRB45H	FL174A	LINE REACTOR, 3ph, 600VAC, 5HP, 5%	ALLEN BRADLEY	TCIKDRB45H	FL152B	LINE REACTOR, 3ph, 600VAC, 5HP, 3%	ALLEN BRADLEY	TCIKDRB42H	FL163B	LINE REACTOR, 3ph, 600VAC, 5HP, 3%	ALLEN BRADLEY	TCIKDRB42H																																																																																																																																																																																																																																																																																																															
N.	DESCRIPTION	MANUFACTURER	CATALOGUE N#																																																																																																																																																																																																																																																																																																																																																																																																																																																																																																																																																																																																											
	NEMA 4 FLOOR MOUNT PANEL, 2DOOR, LIFTING HOOKS, PAINTED STEEL, WITH PANEL MOUNT	HOFFMAN	A74H72DULP /A72P72																																																																																																																																																																																																																																																																																																																																																																																																																																																																																																																																																																																																											
ZS306	DOOR SWITCH	TELEMECANIQUE	XCKP102																																																																																																																																																																																																																																																																																																																																																																																																																																																																																																																																																																																																											
MCB105	CIRCUIT BREAKER WITH FUSES AJT-80, SAFT 194R-R4 AND DP. HANDLES 194R-HM4E	ALLEN BRADLEY	194R-NJ100P3																																																																																																																																																																																																																																																																																																																																																																																																																																																																																																																																																																																																											
SP110A	SPLITTER	ALLEN BRADLEY	1492-PD3263																																																																																																																																																																																																																																																																																																																																																																																																																																																																																																																																																																																																											
SP110B	SPLITTER	ALLEN BRADLEY	1492-PD3263																																																																																																																																																																																																																																																																																																																																																																																																																																																																																																																																																																																																											
SP110C	SPLITTER	ALLEN BRADLEY	1492-PD3263																																																																																																																																																																																																																																																																																																																																																																																																																																																																																																																																																																																																											
T114	TRANSFORMER 600VAC/120VAC, 3KVA.	TRANSFAB	DD3000QH																																																																																																																																																																																																																																																																																																																																																																																																																																																																																																																																																																																																											
SP246	SPLITTER	ALLEN BRADLEY	1492-PD3141																																																																																																																																																																																																																																																																																																																																																																																																																																																																																																																																																																																																											
F152	FUSEBLOC 3P WITH FUSES LPJ-10SP	ALLEN BRADLEY	1492-PDM3141																																																																																																																																																																																																																																																																																																																																																																																																																																																																																																																																																																																																											
F163	FUSEBLOC 3P WITH FUSES LPJ-10SP	ALLEN BRADLEY	1492-PDM3141																																																																																																																																																																																																																																																																																																																																																																																																																																																																																																																																																																																																											
F174	FUSEBLOC 3P WITH FUSES LPJ-10SP	ALLEN BRADLEY	1492-PDM3141																																																																																																																																																																																																																																																																																																																																																																																																																																																																																																																																																																																																											
F112	FUSEBLOC 2P. WITH FUSES ATQR-12	GOULD	USCC1																																																																																																																																																																																																																																																																																																																																																																																																																																																																																																																																																																																																											
CB114	CIRCUIT BREAKER 2P.15A	ALLEN BRADLEY	1492-CB2G150																																																																																																																																																																																																																																																																																																																																																																																																																																																																																																																																																																																																											
CB113	CIRCUIT BREAKER 2P. 5A.	ALLEN BRADLEY	1492-CB2G050																																																																																																																																																																																																																																																																																																																																																																																																																																																																																																																																																																																																											
OL119	CONTACTOR, 3Ph, 9A MAX, 120VAC, 60Hz, CONT.IND	ALLEN BRADLEY	100-C09D10																																																																																																																																																																																																																																																																																																																																																																																																																																																																																																																																																																																																											
OL124	CONTACTOR, 3Ph, 9A MAX, 120VAC, 60Hz, CONT.IND	ALLEN BRADLEY	100-C09D10																																																																																																																																																																																																																																																																																																																																																																																																																																																																																																																																																																																																											
OL129	CONTACTOR, 3Ph, 9A MAX, 120VAC, 60Hz, CONT.IND	ALLEN BRADLEY	100-C09D10																																																																																																																																																																																																																																																																																																																																																																																																																																																																																																																																																																																																											
OL134	CONTACTOR, 3Ph, 9A MAX, 120VAC, 60Hz, CONT.IND	ALLEN BRADLEY	100-C09D10																																																																																																																																																																																																																																																																																																																																																																																																																																																																																																																																																																																																											
OL204	CONTACTOR, 3Ph, 9A MAX, 120VAC, 60Hz, CONT.IND	ALLEN BRADLEY	100-C09D10																																																																																																																																																																																																																																																																																																																																																																																																																																																																																																																																																																																																											
OL209	CONTACTOR, 3Ph, 9A MAX, 120VAC, 60Hz, CONT.IND	ALLEN BRADLEY	100-C09D10																																																																																																																																																																																																																																																																																																																																																																																																																																																																																																																																																																																																											
OL214	CONTACTOR, 3Ph, 9A MAX, 120VAC, 60Hz, CONT.IND	ALLEN BRADLEY	100-C09D10																																																																																																																																																																																																																																																																																																																																																																																																																																																																																																																																																																																																											
OL219	CONTACTOR, 3Ph, 9A MAX, 120VAC, 60Hz, CONT.IND	ALLEN BRADLEY	100-C09D10																																																																																																																																																																																																																																																																																																																																																																																																																																																																																																																																																																																																											
OL224	CONTACTOR, 3Ph, 9A MAX, 120VAC, 60Hz, CONT.IND	ALLEN BRADLEY	100-C09D10																																																																																																																																																																																																																																																																																																																																																																																																																																																																																																																																																																																																											
OL229	CONTACTOR, 3Ph, 9A MAX, 120VAC, 60Hz, CONT.IND	ALLEN BRADLEY	100-C09D10																																																																																																																																																																																																																																																																																																																																																																																																																																																																																																																																																																																																											
OL234	CONTACTOR, 3Ph, 9A MAX, 120VAC, 60Hz, CONT.IND	ALLEN BRADLEY	100-C09D10																																																																																																																																																																																																																																																																																																																																																																																																																																																																																																																																																																																																											
OL244	CONTACTOR, 3Ph, 9A MAX, 120VAC, 60Hz, CONT.IND	ALLEN BRADLEY	100-C09D10																																																																																																																																																																																																																																																																																																																																																																																																																																																																																																																																																																																																											
OL249	CONTACTOR, 3Ph, 9A MAX, 120VAC, 60Hz, CONT.IND	ALLEN BRADLEY	100-C09D10																																																																																																																																																																																																																																																																																																																																																																																																																																																																																																																																																																																																											
MC315	MCS-C Contactor, IEC 30A, 120Vac coil c/a IND	ALLEN BRADLEY	100-C30D10																																																																																																																																																																																																																																																																																																																																																																																																																																																																																																																																																																																																											
M119	CONTACTOR, 3Ph, 9A MAX, 120VAC, 60Hz, CONT.IND	ALLEN BRADLEY	140M-D8N-B40																																																																																																																																																																																																																																																																																																																																																																																																																																																																																																																																																																																																											
M124	CONTACTOR, 3Ph, 9A MAX, 120VAC, 60Hz, CONT.IND	ALLEN BRADLEY	140M-D8N-B40																																																																																																																																																																																																																																																																																																																																																																																																																																																																																																																																																																																																											
M129	CONTACTOR, 3Ph, 9A MAX, 120VAC, 60Hz, CONT.IND	ALLEN BRADLEY	140M-D8N-B40																																																																																																																																																																																																																																																																																																																																																																																																																																																																																																																																																																																																											
M134	CONTACTOR, 3Ph, 9A MAX, 120VAC, 60Hz, CONT.IND	ALLEN BRADLEY	140M-C2N-B10																																																																																																																																																																																																																																																																																																																																																																																																																																																																																																																																																																																																											
M204	CONTACTOR, 3Ph, 9A MAX, 120VAC, 60Hz, CONT.IND	ALLEN BRADLEY	140M-D8N-B40																																																																																																																																																																																																																																																																																																																																																																																																																																																																																																																																																																																																											
M209	CONTACTOR, 3Ph, 9A MAX, 120VAC, 60Hz, CONT.IND	ALLEN BRADLEY	140M-D8N-B40																																																																																																																																																																																																																																																																																																																																																																																																																																																																																																																																																																																																											
M214	CONTACTOR, 3Ph, 9A MAX, 120VAC, 60Hz, CONT.IND	ALLEN BRADLEY	140M-D8N-B40																																																																																																																																																																																																																																																																																																																																																																																																																																																																																																																																																																																																											
M219	CONTACTOR, 3Ph, 9A MAX, 120VAC, 60Hz, CONT.IND	ALLEN BRADLEY	140M-C2N-B10																																																																																																																																																																																																																																																																																																																																																																																																																																																																																																																																																																																																											
M224	CONTACTOR, 3Ph, 9A MAX, 120VAC, 60Hz, CONT.IND	ALLEN BRADLEY	140M-D8N-B40																																																																																																																																																																																																																																																																																																																																																																																																																																																																																																																																																																																																											
M229	CONTACTOR, 3Ph, 9A MAX, 120VAC, 60Hz, CONT.IND	ALLEN BRADLEY	140M-D8N-B40																																																																																																																																																																																																																																																																																																																																																																																																																																																																																																																																																																																																											
M234	CONTACTOR, 3Ph, 9A MAX, 120VAC, 60Hz, CONT.IND	ALLEN BRADLEY	140M-D8N-B40																																																																																																																																																																																																																																																																																																																																																																																																																																																																																																																																																																																																											
M244	CONTACTOR, 3Ph, 9A MAX, 120VAC, 60Hz, CONT.IND	ALLEN BRADLEY	140M-C2N-B10																																																																																																																																																																																																																																																																																																																																																																																																																																																																																																																																																																																																											
M249	CONTACTOR, 3Ph, 9A MAX, 120VAC, 60Hz, CONT.IND	ALLEN BRADLEY	140M-D8N-B40																																																																																																																																																																																																																																																																																																																																																																																																																																																																																																																																																																																																											
FL152A	LINE REACTOR, 3ph, 600VAC, 5HP, 5%	ALLEN BRADLEY	TCIKDRB45H																																																																																																																																																																																																																																																																																																																																																																																																																																																																																																																																																																																																											
FL163A	LINE REACTOR, 3ph, 600VAC, 5HP, 5%	ALLEN BRADLEY	TCIKDRB45H																																																																																																																																																																																																																																																																																																																																																																																																																																																																																																																																																																																																											
FL174A	LINE REACTOR, 3ph, 600VAC, 5HP, 5%	ALLEN BRADLEY	TCIKDRB45H																																																																																																																																																																																																																																																																																																																																																																																																																																																																																																																																																																																																											
FL152B	LINE REACTOR, 3ph, 600VAC, 5HP, 3%	ALLEN BRADLEY	TCIKDRB42H																																																																																																																																																																																																																																																																																																																																																																																																																																																																																																																																																																																																											
FL163B	LINE REACTOR, 3ph, 600VAC, 5HP, 3%	ALLEN BRADLEY	TCIKDRB42H																																																																																																																																																																																																																																																																																																																																																																																																																																																																																																																																																																																																											
PART LIST																																																																																																																																																																																																																																																																																																																																																																																																																																																																																																																																																																																																														
<table><tr><th>N.</th><th>DESCRIPTION</th><th>MANUFACTURER</th><th>CATALOGUE N.</th></tr><tr><td>FL174B</td><td>LINE REACTOR, 3ph, 600VAC, 5HP, 3%</td><td>ALLEN BRADLEY</td><td>TCIKDRB42H</td></tr><tr><td>VFD152</td><td>VARIABLE SPEED DRIVE, 525-600Vac 3 ph, 5Hp.</td><td>TELEMECANIQUE</td><td>ATV31HU40S6X</td></tr><tr><td>VFD163</td><td>VARIABLE SPEED DRIVE, 525-600Vac 3 ph, 5Hp.</td><td>TELEMECANIQUE</td><td>ATV31HU40S6X</td></tr><tr><td>VFD174</td><td>VARIABLE SPEED DRIVE, 525-600Vac 3 ph, 5Hp.</td><td>TELEMECANIQUE</td><td>ATV31HU40S6X</td></tr><tr><td>PS326</td><td>POWER SUPPLY, 120VAC/24VDC, 4.8A</td><td>WEIDMULLER</td><td>870867000</td></tr><tr><td>FL335</td><td>LINE FILTER 120VAC, 3A.</td><td>CUTLER HAMMER</td><td>AGSHWCHI20N05XS</td></tr><tr><td>PR1</td><td>PROGRAMMABLE RELAY EASY, 24VDC</td><td>MOELLER</td><td>EASY512-DC-R</td></tr><tr><td>PR2</td><td>PROGRAMMABLE RELAY EASY, 24VDC</td><td>MOELLER</td><td>EASY512-DC-R</td></tr><tr><td>PR3</td><td>PROGRAMMABLE RELAY EASY, 24VDC</td><td>MOELLER</td><td>EASY512-DC-R</td></tr><tr><td>SP116A</td><td>SPLITTER</td><td>GOULD</td><td>67551</td></tr><tr><td>SPN</td><td>SPLITTER</td><td>GOULD</td><td>67551</td></tr><tr><td></td><td>ETHERNET SWITCH</td><td>PHEDNIX CONTACT</td><td>SFN 5TX</td></tr><tr><td></td><td>MODEM</td><td>US ROBOTIC</td><td>USR325686E</td></tr><tr><td>REC308</td><td>OUTLET 2x120 VAC, 5A.</td><td>WEIDMULLER</td><td>9915490000</td></tr><tr><td>SGT-90-1</td><td>STRAIN GAUGE TRANSMITTER, 4-20ma, 24Vdc</td><td>ADTECH</td><td>SGT-90</td></tr><tr><td>SGT-90-2</td><td>STRAIN GAUGE TRANSMITTER, 4-20ma, 24Vdc</td><td>ADTECH</td><td>SGT-90</td></tr><tr><td>SGT-90-3</td><td>STRAIN GAUGE TRANSMITTER, 4-20ma, 24Vdc</td><td>ADTECH</td><td>SGT-90</td></tr><tr><td>TR313</td><td>TIMER RELAY 3-30sec. COIL 120VAC WITH BASE PF085A AND HOLD DOWN CLIP Y92H-6</td><td>OMRON H3JA-8C</td><td>AC100-120 30S</td></tr><tr><td>CR311</td><td>RELAY 110-120Vca, DPDT AND BASE PTF14A-E</td><td>OMRON</td><td>LY4-AC120</td></tr><tr><td>CR312</td><td>RELAY 110-120Vca, DPDT AND BASE PYF08A-E</td><td>OMRON</td><td>MY2-AC110/120</td></tr><tr><td>CR908</td><td>RELAY 110-120Vca, DPDT AND BASE PYF08A-E</td><td>OMRON</td><td>MY2-AC110/120</td></tr><tr><td>CR916</td><td>RELAY 110-120Vca, DPDT AND BASE PYF08A-E</td><td>OMRON</td><td>MY2-AC110/120</td></tr><tr><td>CR924</td><td>RELAY 110-120Vca, DPDT AND BASE PYF08A-E</td><td>OMRON</td><td>MY2-AC110/120</td></tr><tr><td>CR1008</td><td>RELAY 110-120Vca, DPDT AND BASE PYF08A-E</td><td>OMRON</td><td>MY2-AC110/120</td></tr><tr><td>CR1014</td><td>RELAY 110-120Vca, DPDT AND BASE PYF08A-E</td><td>OMRON</td><td>MY2-AC110/120</td></tr><tr><td>CR1026</td><td>RELAY 110-120Vca, DPDT AND BASE PYF08A-E</td><td>OMRON</td><td>MY2-AC110/120</td></tr><tr><td>CR1032</td><td>RELAY 110-120Vca, DPDT AND BASE PYF08A-E</td><td>OMRON</td><td>MY2-AC110/120</td></tr><tr><td>VFD152</td><td>TOGGLE SWITCH ON-OFF-ON</td><td>T & B</td><td>MTF-106E</td></tr><tr><td>VFD152</td><td>EG 35/I ONE AP MONT. (Empty Housing)</td><td>WEIDMULLER</td><td>0453860000</td></tr><tr><td>VFD163</td><td>TOGGLE SWITCH ON-OFF-ON</td><td>T & B</td><td>MTF-106E</td></tr><tr><td>VFD163</td><td>EG 35/I ONE AP MONT. (Empty Housing)</td><td>WEIDMULLER</td><td>0453860000</td></tr><tr><td>VFD174</td><td>TOGGLE SWITCH ON-OFF-ON</td><td>T & B</td><td>MTF-106E</td></tr><tr><td>VFD174</td><td>EG 35/I ONE AP MONT. (Empty Housing)</td><td>WEIDMULLER</td><td>0453860000</td></tr><tr><td>S1318</td><td>SELECTOR MAN AUTO</td><td>C&K</td><td>7101SYZQE</td></tr><tr><td>S1318</td><td>EG 35/I ONE AP MONT. (Empty Housing)</td><td>WEIDMULLER</td><td>0453860000</td></tr><tr><td>S1425</td><td>SELECTOR MAN AUTO</td><td>C&K</td><td>7101SYZQE</td></tr><tr><td>S1425</td><td>EG 35/I ONE AP MONT. (Empty Housing)</td><td>WEIDMULLER</td><td>0453860000</td></tr><tr><td>S1511</td><td>SELECTOR MAN AUTO</td><td>C&K</td><td>7101SYZQE</td></tr><tr><td>S1511</td><td>EG 35/I ONE AP MONT. (Empty Housing)</td><td>WEIDMULLER</td><td>0453860000</td></tr><tr><td>P1318</td><td>POTENTIOMETER 15 R-25 kOhms</td><td>BOURNS</td><td>3006P-1-253/H-83P</td></tr><tr><td>P1318</td><td>EG 35/I ONE AP MONT. (Empty Housing)</td><td>WEIDMULLER</td><td>0453860000</td></tr><tr><td>P1425</td><td>POTENTIOMETER 15 R-25 kOhms</td><td>BOURNS</td><td>3006P-1-253/H-83P</td></tr><tr><td>P1425</td><td>EG 35/I ONE AP MONT. (Empty Housing)</td><td>WEIDMULLER</td><td>0453860000</td></tr><tr><td>P1511</td><td>POTENTIOMETER 15 R-25 kOhms</td><td>BOURNS</td><td>3006P-1-253/H-83P</td></tr><tr><td>P1511</td><td>EG 35/I ONE AP MONT. (Empty Housing)</td><td>WEIDMULLER</td><td>0453860000</td></tr><tr><td>RA1318</td><td>TRANSFER RELAY</td><td>ABB</td><td>1SNA610115R2200</td></tr></table>																																																																																																				N.	DESCRIPTION	MANUFACTURER	CATALOGUE N.	FL174B	LINE REACTOR, 3ph, 600VAC, 5HP, 3%	ALLEN BRADLEY	TCIKDRB42H	VFD152	VARIABLE SPEED DRIVE, 525-600Vac 3 ph, 5Hp.	TELEMECANIQUE	ATV31HU40S6X	VFD163	VARIABLE SPEED DRIVE, 525-600Vac 3 ph, 5Hp.	TELEMECANIQUE	ATV31HU40S6X	VFD174	VARIABLE SPEED DRIVE, 525-600Vac 3 ph, 5Hp.	TELEMECANIQUE	ATV31HU40S6X	PS326	POWER SUPPLY, 120VAC/24VDC, 4.8A	WEIDMULLER	870867000	FL335	LINE FILTER 120VAC, 3A.	CUTLER HAMMER	AGSHWCHI20N05XS	PR1	PROGRAMMABLE RELAY EASY, 24VDC	MOELLER	EASY512-DC-R	PR2	PROGRAMMABLE RELAY EASY, 24VDC	MOELLER	EASY512-DC-R	PR3	PROGRAMMABLE RELAY EASY, 24VDC	MOELLER	EASY512-DC-R	SP116A	SPLITTER	GOULD	67551	SPN	SPLITTER	GOULD	67551		ETHERNET SWITCH	PHEDNIX CONTACT	SFN 5TX		MODEM	US ROBOTIC	USR325686E	REC308	OUTLET 2x120 VAC, 5A.	WEIDMULLER	9915490000	SGT-90-1	STRAIN GAUGE TRANSMITTER, 4-20ma, 24Vdc	ADTECH	SGT-90	SGT-90-2	STRAIN GAUGE TRANSMITTER, 4-20ma, 24Vdc	ADTECH	SGT-90	SGT-90-3	STRAIN GAUGE TRANSMITTER, 4-20ma, 24Vdc	ADTECH	SGT-90	TR313	TIMER RELAY 3-30sec. COIL 120VAC WITH BASE PF085A AND HOLD DOWN CLIP Y92H-6	OMRON H3JA-8C	AC100-120 30S	CR311	RELAY 110-120Vca, DPDT AND BASE PTF14A-E	OMRON	LY4-AC120	CR312	RELAY 110-120Vca, DPDT AND BASE PYF08A-E	OMRON	MY2-AC110/120	CR908	RELAY 110-120Vca, DPDT AND BASE PYF08A-E	OMRON	MY2-AC110/120	CR916	RELAY 110-120Vca, DPDT AND BASE PYF08A-E	OMRON	MY2-AC110/120	CR924	RELAY 110-120Vca, DPDT AND BASE PYF08A-E	OMRON	MY2-AC110/120	CR1008	RELAY 110-120Vca, DPDT AND BASE PYF08A-E	OMRON	MY2-AC110/120	CR1014	RELAY 110-120Vca, DPDT AND BASE PYF08A-E	OMRON	MY2-AC110/120	CR1026	RELAY 110-120Vca, DPDT AND BASE PYF08A-E	OMRON	MY2-AC110/120	CR1032	RELAY 110-120Vca, DPDT AND BASE PYF08A-E	OMRON	MY2-AC110/120	VFD152	TOGGLE SWITCH ON-OFF-ON	T & B	MTF-106E	VFD152	EG 35/I ONE AP MONT. (Empty Housing)	WEIDMULLER	0453860000	VFD163	TOGGLE SWITCH ON-OFF-ON	T & B	MTF-106E	VFD163	EG 35/I ONE AP MONT. (Empty Housing)	WEIDMULLER	0453860000	VFD174	TOGGLE SWITCH ON-OFF-ON	T & B	MTF-106E	VFD174	EG 35/I ONE AP MONT. (Empty Housing)	WEIDMULLER	0453860000	S1318	SELECTOR MAN AUTO	C&K	7101SYZQE	S1318	EG 35/I ONE AP MONT. (Empty Housing)	WEIDMULLER	0453860000	S1425	SELECTOR MAN AUTO	C&K	7101SYZQE	S1425	EG 35/I ONE AP MONT. (Empty Housing)	WEIDMULLER	0453860000	S1511	SELECTOR MAN AUTO	C&K	7101SYZQE	S1511	EG 35/I ONE AP MONT. (Empty Housing)	WEIDMULLER	0453860000	P1318	POTENTIOMETER 15 R-25 kOhms	BOURNS	3006P-1-253/H-83P	P1318	EG 35/I ONE AP MONT. (Empty Housing)	WEIDMULLER	0453860000	P1425	POTENTIOMETER 15 R-25 kOhms	BOURNS	3006P-1-253/H-83P	P1425	EG 35/I ONE AP MONT. (Empty Housing)	WEIDMULLER	0453860000	P1511	POTENTIOMETER 15 R-25 kOhms	BOURNS	3006P-1-253/H-83P	P1511	EG 35/I ONE AP MONT. (Empty Housing)	WEIDMULLER	0453860000	RA1318	TRANSFER RELAY	ABB	1SNA610115R2200																																																																																																																																																																																																																																																																																																															
N.	DESCRIPTION	MANUFACTURER	CATALOGUE N.																																																																																																																																																																																																																																																																																																																																																																																																																																																																																																																																																																																																											
FL174B	LINE REACTOR, 3ph, 600VAC, 5HP, 3%	ALLEN BRADLEY	TCIKDRB42H																																																																																																																																																																																																																																																																																																																																																																																																																																																																																																																																																																																																											
VFD152	VARIABLE SPEED DRIVE, 525-600Vac 3 ph, 5Hp.	TELEMECANIQUE	ATV31HU40S6X																																																																																																																																																																																																																																																																																																																																																																																																																																																																																																																																																																																																											
VFD163	VARIABLE SPEED DRIVE, 525-600Vac 3 ph, 5Hp.	TELEMECANIQUE	ATV31HU40S6X																																																																																																																																																																																																																																																																																																																																																																																																																																																																																																																																																																																																											
VFD174	VARIABLE SPEED DRIVE, 525-600Vac 3 ph, 5Hp.	TELEMECANIQUE	ATV31HU40S6X																																																																																																																																																																																																																																																																																																																																																																																																																																																																																																																																																																																																											
PS326	POWER SUPPLY, 120VAC/24VDC, 4.8A	WEIDMULLER	870867000																																																																																																																																																																																																																																																																																																																																																																																																																																																																																																																																																																																																											
FL335	LINE FILTER 120VAC, 3A.	CUTLER HAMMER	AGSHWCHI20N05XS																																																																																																																																																																																																																																																																																																																																																																																																																																																																																																																																																																																																											
PR1	PROGRAMMABLE RELAY EASY, 24VDC	MOELLER	EASY512-DC-R																																																																																																																																																																																																																																																																																																																																																																																																																																																																																																																																																																																																											
PR2	PROGRAMMABLE RELAY EASY, 24VDC	MOELLER	EASY512-DC-R																																																																																																																																																																																																																																																																																																																																																																																																																																																																																																																																																																																																											
PR3	PROGRAMMABLE RELAY EASY, 24VDC	MOELLER	EASY512-DC-R																																																																																																																																																																																																																																																																																																																																																																																																																																																																																																																																																																																																											
SP116A	SPLITTER	GOULD	67551																																																																																																																																																																																																																																																																																																																																																																																																																																																																																																																																																																																																											
SPN	SPLITTER	GOULD	67551																																																																																																																																																																																																																																																																																																																																																																																																																																																																																																																																																																																																											
	ETHERNET SWITCH	PHEDNIX CONTACT	SFN 5TX																																																																																																																																																																																																																																																																																																																																																																																																																																																																																																																																																																																																											
	MODEM	US ROBOTIC	USR325686E																																																																																																																																																																																																																																																																																																																																																																																																																																																																																																																																																																																																											
REC308	OUTLET 2x120 VAC, 5A.	WEIDMULLER	9915490000																																																																																																																																																																																																																																																																																																																																																																																																																																																																																																																																																																																																											
SGT-90-1	STRAIN GAUGE TRANSMITTER, 4-20ma, 24Vdc	ADTECH	SGT-90																																																																																																																																																																																																																																																																																																																																																																																																																																																																																																																																																																																																											
SGT-90-2	STRAIN GAUGE TRANSMITTER, 4-20ma, 24Vdc	ADTECH	SGT-90																																																																																																																																																																																																																																																																																																																																																																																																																																																																																																																																																																																																											
SGT-90-3	STRAIN GAUGE TRANSMITTER, 4-20ma, 24Vdc	ADTECH	SGT-90																																																																																																																																																																																																																																																																																																																																																																																																																																																																																																																																																																																																											
TR313	TIMER RELAY 3-30sec. COIL 120VAC WITH BASE PF085A AND HOLD DOWN CLIP Y92H-6	OMRON H3JA-8C	AC100-120 30S																																																																																																																																																																																																																																																																																																																																																																																																																																																																																																																																																																																																											
CR311	RELAY 110-120Vca, DPDT AND BASE PTF14A-E	OMRON	LY4-AC120																																																																																																																																																																																																																																																																																																																																																																																																																																																																																																																																																																																																											
CR312	RELAY 110-120Vca, DPDT AND BASE PYF08A-E	OMRON	MY2-AC110/120																																																																																																																																																																																																																																																																																																																																																																																																																																																																																																																																																																																																											
CR908	RELAY 110-120Vca, DPDT AND BASE PYF08A-E	OMRON	MY2-AC110/120																																																																																																																																																																																																																																																																																																																																																																																																																																																																																																																																																																																																											
CR916	RELAY 110-120Vca, DPDT AND BASE PYF08A-E	OMRON	MY2-AC110/120																																																																																																																																																																																																																																																																																																																																																																																																																																																																																																																																																																																																											
CR924	RELAY 110-120Vca, DPDT AND BASE PYF08A-E	OMRON	MY2-AC110/120																																																																																																																																																																																																																																																																																																																																																																																																																																																																																																																																																																																																											
CR1008	RELAY 110-120Vca, DPDT AND BASE PYF08A-E	OMRON	MY2-AC110/120																																																																																																																																																																																																																																																																																																																																																																																																																																																																																																																																																																																																											
CR1014	RELAY 110-120Vca, DPDT AND BASE PYF08A-E	OMRON	MY2-AC110/120																																																																																																																																																																																																																																																																																																																																																																																																																																																																																																																																																																																																											
CR1026	RELAY 110-120Vca, DPDT AND BASE PYF08A-E	OMRON	MY2-AC110/120																																																																																																																																																																																																																																																																																																																																																																																																																																																																																																																																																																																																											
CR1032	RELAY 110-120Vca, DPDT AND BASE PYF08A-E	OMRON	MY2-AC110/120																																																																																																																																																																																																																																																																																																																																																																																																																																																																																																																																																																																																											
VFD152	TOGGLE SWITCH ON-OFF-ON	T & B	MTF-106E																																																																																																																																																																																																																																																																																																																																																																																																																																																																																																																																																																																																											
VFD152	EG 35/I ONE AP MONT. (Empty Housing)	WEIDMULLER	0453860000																																																																																																																																																																																																																																																																																																																																																																																																																																																																																																																																																																																																											
VFD163	TOGGLE SWITCH ON-OFF-ON	T & B	MTF-106E																																																																																																																																																																																																																																																																																																																																																																																																																																																																																																																																																																																																											
VFD163	EG 35/I ONE AP MONT. (Empty Housing)	WEIDMULLER	0453860000																																																																																																																																																																																																																																																																																																																																																																																																																																																																																																																																																																																																											
VFD174	TOGGLE SWITCH ON-OFF-ON	T & B	MTF-106E																																																																																																																																																																																																																																																																																																																																																																																																																																																																																																																																																																																																											
VFD174	EG 35/I ONE AP MONT. (Empty Housing)	WEIDMULLER	0453860000																																																																																																																																																																																																																																																																																																																																																																																																																																																																																																																																																																																																											
S1318	SELECTOR MAN AUTO	C&K	7101SYZQE																																																																																																																																																																																																																																																																																																																																																																																																																																																																																																																																																																																																											
S1318	EG 35/I ONE AP MONT. (Empty Housing)	WEIDMULLER	0453860000																																																																																																																																																																																																																																																																																																																																																																																																																																																																																																																																																																																																											
S1425	SELECTOR MAN AUTO	C&K	7101SYZQE																																																																																																																																																																																																																																																																																																																																																																																																																																																																																																																																																																																																											
S1425	EG 35/I ONE AP MONT. (Empty Housing)	WEIDMULLER	0453860000																																																																																																																																																																																																																																																																																																																																																																																																																																																																																																																																																																																																											
S1511	SELECTOR MAN AUTO	C&K	7101SYZQE																																																																																																																																																																																																																																																																																																																																																																																																																																																																																																																																																																																																											
S1511	EG 35/I ONE AP MONT. (Empty Housing)	WEIDMULLER	0453860000																																																																																																																																																																																																																																																																																																																																																																																																																																																																																																																																																																																																											
P1318	POTENTIOMETER 15 R-25 kOhms	BOURNS	3006P-1-253/H-83P																																																																																																																																																																																																																																																																																																																																																																																																																																																																																																																																																																																																											
P1318	EG 35/I ONE AP MONT. (Empty Housing)	WEIDMULLER	0453860000																																																																																																																																																																																																																																																																																																																																																																																																																																																																																																																																																																																																											
P1425	POTENTIOMETER 15 R-25 kOhms	BOURNS	3006P-1-253/H-83P																																																																																																																																																																																																																																																																																																																																																																																																																																																																																																																																																																																																											
P1425	EG 35/I ONE AP MONT. (Empty Housing)	WEIDMULLER	0453860000																																																																																																																																																																																																																																																																																																																																																																																																																																																																																																																																																																																																											
P1511	POTENTIOMETER 15 R-25 kOhms	BOURNS	3006P-1-253/H-83P																																																																																																																																																																																																																																																																																																																																																																																																																																																																																																																																																																																																											
P1511	EG 35/I ONE AP MONT. (Empty Housing)	WEIDMULLER	0453860000																																																																																																																																																																																																																																																																																																																																																																																																																																																																																																																																																																																																											
RA1318	TRANSFER RELAY	ABB	1SNA610115R2200																																																																																																																																																																																																																																																																																																																																																																																																																																																																																																																																																																																																											
PART LIST																																																																																																																																																																																																																																																																																																																																																																																																																																																																																																																																																																																																														
<table><tr><th>N.</th><th>DESCRIPTION</th><th>MANUFACTURER</th><th>CATALOGUE N.</th></tr><tr><td>RA1425</td><td>TRANSFER RELAY</td><td>ABB</td><td>1SNA610115R2200</td></tr><tr><td>RA1511</td><td>TRANSFER RELAY</td><td>ABB</td><td>1SNA610115R2200</td></tr><tr><td>CA1318</td><td>CONVERTER pot/4-20ma</td><td>WEIDMULLER</td><td>9908810000</td></tr><tr><td>CA1425</td><td>CONVERTER pot/4-20ma</td><td>WEIDMULLER</td><td>9908810000</td></tr><tr><td>CA1511</td><td>CONVERTER pot/4-20ma</td><td>WEIDMULLER</td><td>9908810000</td></tr><tr><td></td><td>Fixture Neon 24", 120 VAC, 1 tube, c/a neon</td><td>PACO</td><td></td></tr><tr><td>PLC</td><td>CHASSIS 13 SLOT</td><td>ALLEN BRADLEY</td><td>1746-A13</td></tr><tr><td>PLC</td><td>CHASSIS 4 SLOT</td><td>ALLEN BRADLEY</td><td>1746-A4</td></tr><tr><td>HMI</td><td>PV600 DH+ TOUCH SCREEN C/A COM. CABLE</td><td>ALLEN BRADLEY</td><td>2711-T6C2011</td></tr><tr><td>AC</td><td>AIR CONDITIONER UNIT</td><td>KOOLTRONIC</td><td>K2NA4C3P21R</td></tr><tr><td></td><td></td><td></td><td></td></tr><tr><td></td><td></td><td></td><td></td></tr><tr><td></td><td></td><td></td><td></td></tr><tr><td></td><td></td><td></td><td></td></tr><tr><td></td><td></td><td></td><td></td></tr><tr><td></td><td></td><td></td><td></td></tr><tr><td></td><td></td><td></td><td></td></tr><tr><td></td><td></td><td></td><td></td></tr><tr><td></td><td></td><td></td><td></td></tr><tr><td></td><td></td><td></td><td></td></tr><tr><td></td><td></td><td></td><td></td></tr><tr><td></td><td></td><td></td><td></td></tr><tr><td></td><td></td><td></td><td></td></tr><tr><td></td><td></td><td></td><td></td></tr><tr><td></td><td></td><td></td><td></td></tr><tr><td></td><td></td><td></td><td></td></tr><tr><td></td><td></td><td></td><td></td></tr><tr><td></td><td></td><td></td><td></td></tr><tr><td></td><td></td><td></td><td></td></tr><tr><td></td><td></td><td></td><td></td></tr><tr><td></td><td></td><td></td><td></td></tr><tr><td></td><td></td><td></td><td></td></tr><tr><td></td><td></td><td></td><td></td></tr><tr><td></td><td></td><td></td><td></td></tr><tr><td></td><td></td><td></td><td></td></tr><tr><td></td><td></td><td></td><td></td></tr><tr><td></td><td></td><td></td><td></td></tr><tr><td></td><td></td><td></td><td></td></tr><tr><td></td><td></td><td></td><td></td></tr><tr><td></td><td></td><td></td><td></td></tr><tr><td></td><td></td><td></td><td></td></tr><tr><td></td><td></td><td></td><td></td></tr><tr><td></td><td></td><td></td><td></td></tr><tr><td></td><td></td><td></td><td></td></tr><tr><td></td><td></td><td></td><td></td></tr><tr><td></td><td></td><td></td><td></td></tr><tr><td></td><td></td><td></td><td></td></tr><tr><td></td><td></td><td></td><td></td></tr><tr><td></td><td></td><td></td><td></td></tr><tr><td></td><td></td><td></td><td></td></tr><tr><td></td><td></td><td></td><td></td></tr><tr><td></td><td></td><td></td><td></td></tr><tr><td></td><td></td><td></td><td></td></tr><tr><td></td><td></td><td></td><td></td></tr><tr><td></td><td></td><td></td><td></td></tr><tr><td></td><td></td><td></td><td></td></tr><tr><td></td><td></td><td></td><td></td></tr><tr><td></td><td></td><td></td><td></td></tr><tr><td></td><td></td><td></td><td></td></tr><tr><td></td><td></td><td></td><td></td></tr><tr><td></td><td></td><td></td><td></td></tr><tr><td></td><td></td><td></td><td></td></tr><tr><td></td><td></td><td></td><td></td></tr><tr><td></td><td></td><td></td><td></td></tr><tr><td></td><td></td><td></td><td></td></tr><tr><td></td><td></td><td></td><td></td></tr><tr><td></td><td></td><td></td><td></td></tr><tr><td></td><td></td><td></td><td></td></tr><tr><td></td><td></td><td></td><td></td></tr><tr><td></td><td></td><td></td><td></td></tr><tr><td></td><td></td><td></td><td></td></tr><tr><td></td><td></td><td></td><td></td></tr><tr><td></td><td></td><td></td><td></td></tr><tr><td></td><td></td><td></td><td></td></tr><tr><td></td><td></td><td></td><td></td></tr><tr><td></td><td></td><td></td><td></td></tr><tr><td></td><td></td><td></td><td></td></tr><tr><td></td><td></td><td></td><td></td></tr><tr><td></td><td></td><td></td><td></td></tr><tr><td></td><td></td><td></td><td></td></tr><tr><td></td><td></td><td></td><td></td></tr><tr><td></td><td></td><td></td><td></td></tr><tr><td></td><td></td><td></td><td></td></tr><tr><td></td><td></td><td></td><td></td></tr><tr><td></td><td></td><td></td><td></td></tr><tr><td></td><td></td><td></td><td></td></tr><tr><td></td><td></td><td></td><td></td></tr><tr><td></td><td></td><td></td><td></td></tr><tr><td></td><td></td><td></td><td></td></tr><tr><td></td><td></td><td></td><td></td></tr><tr><td></td><td></td><td></td><td></td></tr><tr><td></td><td></td><td></td><td></td></tr><tr><td></td><td></td><td></td><td></td></tr><tr><td></td><td></td><td></td><td></td></tr><tr><td></td><td></td><td></td><td></td></tr><tr><td></td><td></td><td></td><td></td></tr><tr><td></td><td></td><td></td><td></td></tr><tr><td></td><td></td><td></td><td></td></tr><tr><td></td><td></td><td></td><td></td></tr><tr><td></td><td></td><td></td><td></td></tr><tr><td></td><td></td><td></td><td></td></tr><tr><td></td><td></td><td></td><td></td></tr><tr><td></td><td></td><td></td><td></td></tr><tr><td></td><td></td><td></td><td></td></tr><tr><td></td><td></td><td></td><td></td></tr><tr><td></td><td></td><td></td><td></td></tr><tr><td></td><td></td><td></td><td></td></tr><tr><td></td><td></td><td></td><td></td></tr><tr><td></td><td></td><td></td><td></td></tr><tr><td></td><td></td><td></td><td></td></tr><tr><td></td><td></td><td></td><td></td></tr><tr><td></td><td></td><td></td><td></td></tr><tr><td></td><td></td><td></td><td></td></tr><tr><td></td><td></td><td></td><td></td></tr><tr><td></td><td></td><td></td><td></td></tr><tr><td></td><td></td><td></td><td></td></tr><tr><td></td><td></td><td></td><td></td></tr><tr><td></td><td></td><td></td><td></td></tr><tr><td></td><td></td><td></td><td></td></tr><tr><td></td><td></td><td></td><td></td></tr><tr><td></td><td></td><td></td><td></td></tr><tr><td></td><td></td><td></td><</tr></table>																																																																																																				N.	DESCRIPTION	MANUFACTURER	CATALOGUE N.	RA1425	TRANSFER RELAY	ABB	1SNA610115R2200	RA1511	TRANSFER RELAY	ABB	1SNA610115R2200	CA1318	CONVERTER pot/4-20ma	WEIDMULLER	9908810000	CA1425	CONVERTER pot/4-20ma	WEIDMULLER	9908810000	CA1511	CONVERTER pot/4-20ma	WEIDMULLER	9908810000		Fixture Neon 24", 120 VAC, 1 tube, c/a neon	PACO		PLC	CHASSIS 13 SLOT	ALLEN BRADLEY	1746-A13	PLC	CHASSIS 4 SLOT	ALLEN BRADLEY	1746-A4	HMI	PV600 DH+ TOUCH SCREEN C/A COM. CABLE	ALLEN BRADLEY	2711-T6C2011	AC	AIR CONDITIONER UNIT	KOOLTRONIC	K2NA4C3P21R																																																																																																																																																																																																																																																																																																																																																																																																																																																															
N.	DESCRIPTION	MANUFACTURER	CATALOGUE N.																																																																																																																																																																																																																																																																																																																																																																																																																																																																																																																																																																																																											
RA1425	TRANSFER RELAY	ABB	1SNA610115R2200																																																																																																																																																																																																																																																																																																																																																																																																																																																																																																																																																																																																											
RA1511	TRANSFER RELAY	ABB	1SNA610115R2200																																																																																																																																																																																																																																																																																																																																																																																																																																																																																																																																																																																																											
CA1318	CONVERTER pot/4-20ma	WEIDMULLER	9908810000																																																																																																																																																																																																																																																																																																																																																																																																																																																																																																																																																																																																											
CA1425	CONVERTER pot/4-20ma	WEIDMULLER	9908810000																																																																																																																																																																																																																																																																																																																																																																																																																																																																																																																																																																																																											
CA1511	CONVERTER pot/4-20ma	WEIDMULLER	9908810000																																																																																																																																																																																																																																																																																																																																																																																																																																																																																																																																																																																																											
	Fixture Neon 24", 120 VAC, 1 tube, c/a neon	PACO																																																																																																																																																																																																																																																																																																																																																																																																																																																																																																																																																																																																												
PLC	CHASSIS 13 SLOT	ALLEN BRADLEY	1746-A13																																																																																																																																																																																																																																																																																																																																																																																																																																																																																																																																																																																																											
PLC	CHASSIS 4 SLOT	ALLEN BRADLEY	1746-A4																																																																																																																																																																																																																																																																																																																																																																																																																																																																																																																																																																																																											
HMI	PV600 DH+ TOUCH SCREEN C/A COM. CABLE	ALLEN BRADLEY	2711-T6C2011																																																																																																																																																																																																																																																																																																																																																																																																																																																																																																																																																																																																											
AC	AIR CONDITIONER UNIT	KOOLTRONIC	K2NA4C3P21R																																																																																																																																																																																																																																																																																																																																																																																																																																																																																																																																																																																																											



		<div><div><div></div><div>CONTRÔLES RL</div><div>894, BERLIER, LAVAL (QUÉBEC) H7L 4K5</div><div>www.controlesrl.com</div></div><div>REF. CONTRÔLES RL:</div><div>077751</div></div>		<div>CONFIDENTIALITY AND INTELLECTUAL PROPERTY NOTICE ALL INFORMATION CONTAINED IN THIS DOCUMENT IS THE SOLE PROPERTY OF JOHN MEUNIER INC. AND IS PROTECTED BY ALL APPLICABLE LAWS, INCLUDING BUT NOT LIMITED TO COPYRIGHT AND OTHER INTELLECTUAL PROPERTY LAWS. THE DESIGN CONCEPTS AND INFORMATION CONTAINED HEREIN ARE PROPRIETARY TO JMI AND ARE NOT TO BE DISCLOSED, REPRODUCED, LOANED, REMITTED OR USED IN ANY OTHER MANNER WITHOUT THE EXPRESS WRITTEN CONSENT OF JMI. JMI ASSUMES NO RESPONSIBILITY OR LIABILITY FOR THE USE OF THIS DOCUMENT FOR ANY OTHER PROJECT, OR IN A MANNER THAT DOES NOT RELATE TO THE FITNESS OR PURPOSE OF THIS DOCUMENT. IN NO EVENT SHALL THIS DOCUMENT OR THE DESIGN CONCEPTS AND INFORMATION CONTAINED HEREIN BE USED IN A MANNER DENYING TO THE INTERESTS OF JMI. ALL COPYRIGHT, PATENT AND OTHER INTELLECTUAL PROPERTY RIGHTS ARE RESERVED. ACCEPTANCE OF THE DELIVERY OF THIS DOCUMENT CONSTITUTES AGREEMENT TO THESE TERMS AND CONDITIONS.</div>										<div>DESIGNER M.MERABTI</div> <div>DATE 06-07-26</div>		<div>TITLE ACTIFLO CONTROL PANEL SCHEMATIC DIAGRAM</div>															
												<div>CHECKER</div> <div>DATE</div>		<div>CLIENT DEEP RIVER (ONT.) ACTIFLO E501</div>																	
		C AS BUILT		06-09-27		M.M				BB		<div>ENGINEER</div> <div>DATE</div>		<div>JOHN MEUNIER</div> <div>4105, SARTELON STREET MONTREAL, QC, H4S 2B3</div>																	
		B FOR CONSTRUCTION		06-08-17		M.M				<div>MANAGER</div> <div>DATE</div>																					
		A ISSUED FOR APPROVAL		06-07-26		M.M						<div>FILE: 077751-001-E04-002-C</div>																			
CADRE_GENICO_JMI_24X36.DWG		INTL REF:				BAR = 1" AT PLOT SCALE		REV		DESCRIPTION		DATE		DWN		CHKD		APVD		ECN		PROJECT E501		CODE 001		DRAWING E04		SHEET 02 OF 21		REV C	

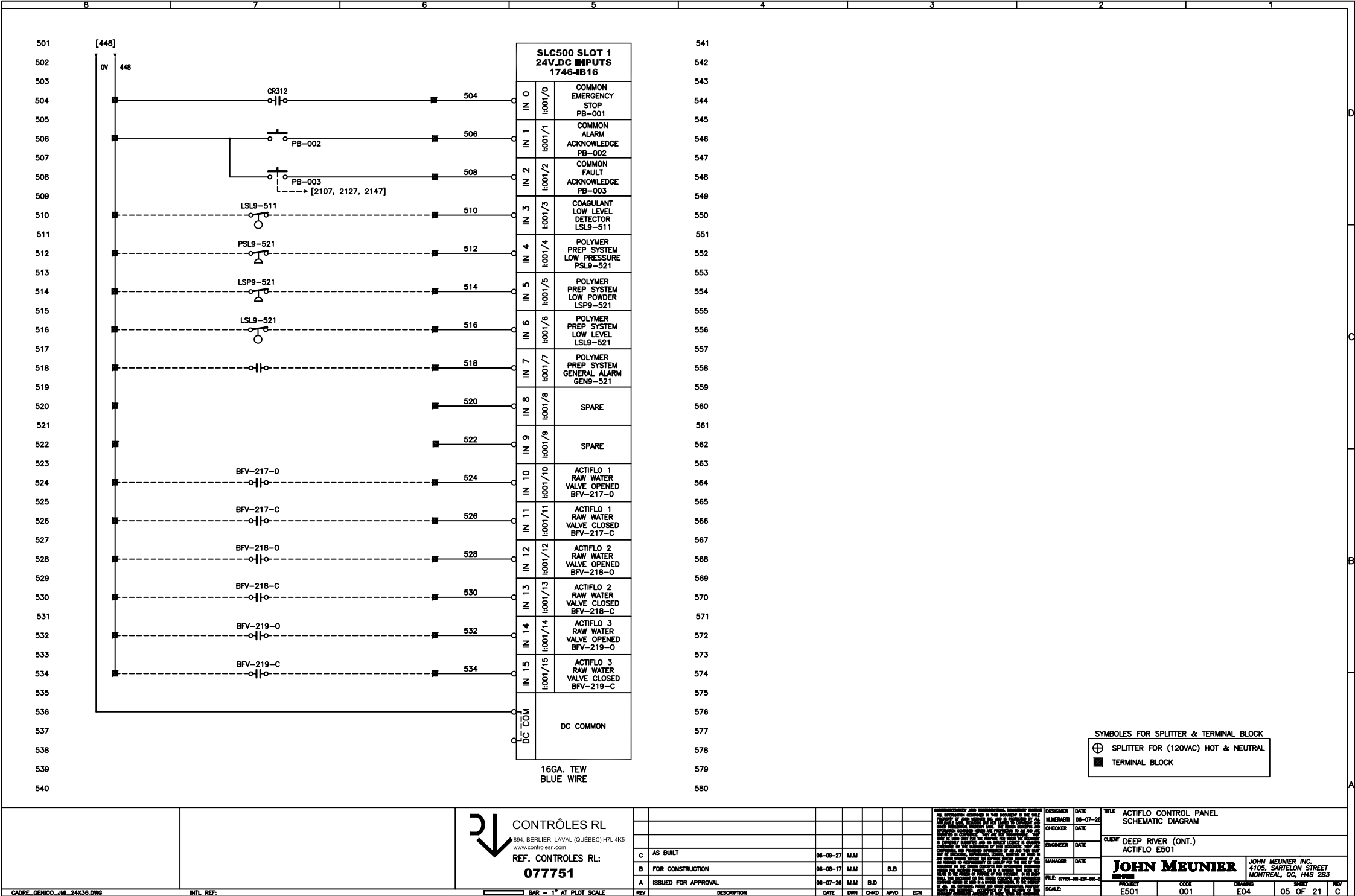


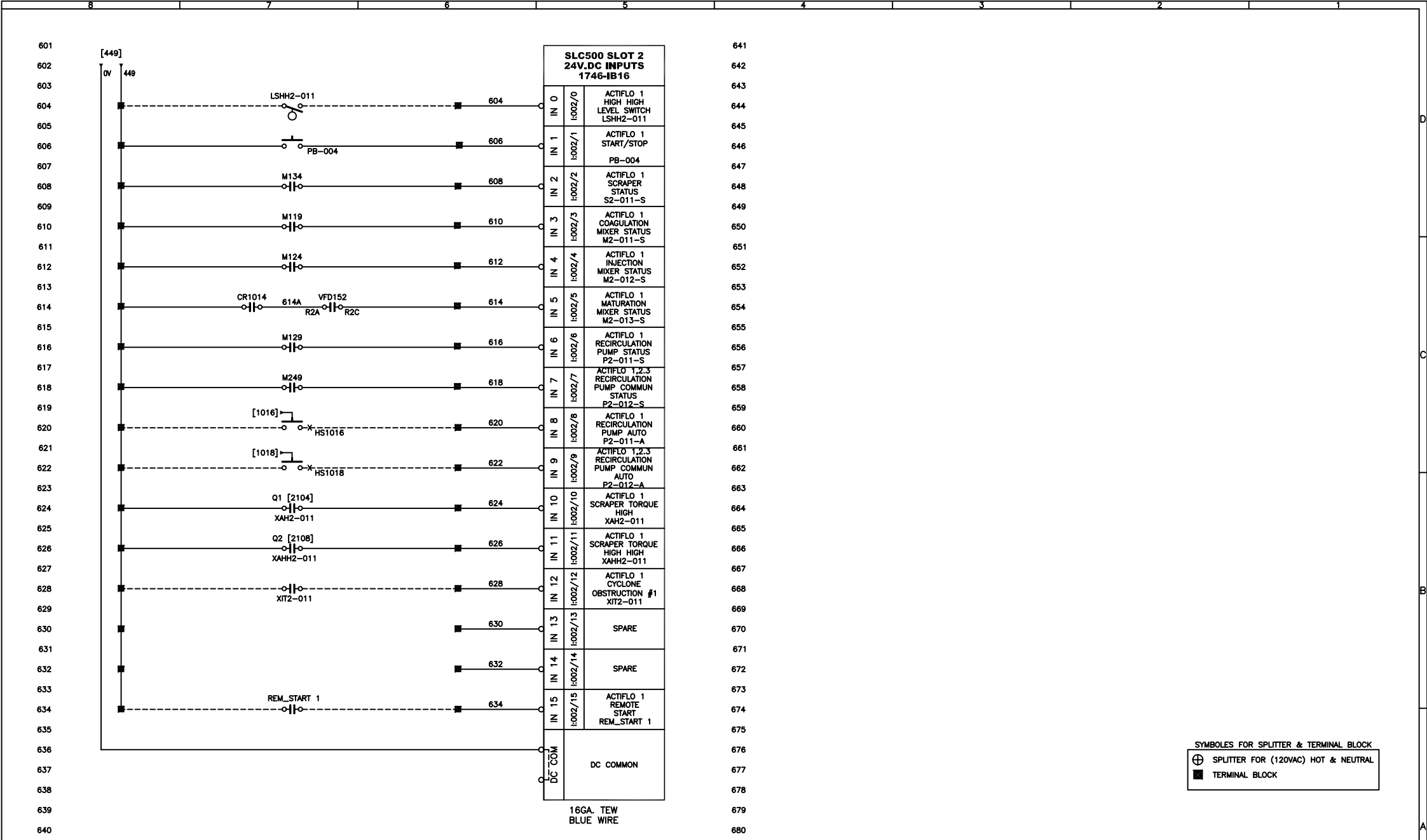


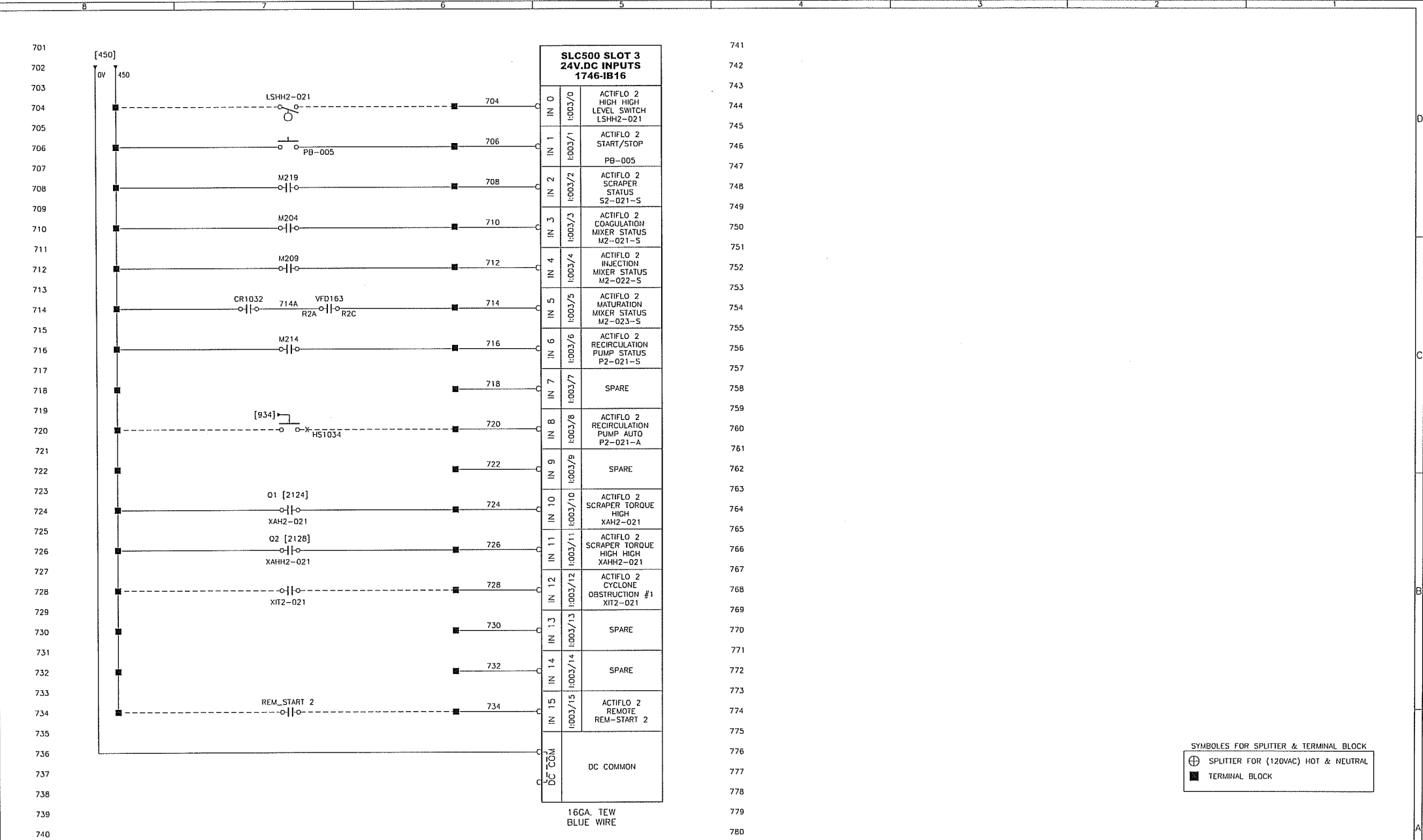
<div><div><div></div><div></div></div><div>CONTRÔLES RL</div><div>894, BERLIER, LAVAL (QUÉBEC) H7L 4K5 www.controlesrl.com</div></div> <div>REF. CONTRÔLES RL:</div> <div>077751</div>		<div>CONFIDENTIALITY AND INTELLECTUAL PROPERTY NOTICE</div> <div>ALL INFORMATION CONTAINED IN THIS DOCUMENT IS THE SOLE PROPERTY OF JOHN MEUNIER INC. AND IS PROTECTED BY ALL APPLICABLE LAWS, INCLUDING BUT NOT LIMITED TO COPYRIGHT AND OTHER INTELLECTUAL PROPERTY LAWS. THE DESIGN CONCEPTS AND INFORMATION CONTAINED HEREIN ARE PROPRIETARY TO JMI AND ARE SUBMITTED IN CONFIDENCE. THEY ARE NOT TRANSFERABLE. THEY MUST BE USED ONLY FOR THE PURPOSE FOR WHICH THE DOCUMENT IS EXPRESSLY SUBMITTED AND NO IMPLICIT LICENSE IS GRANTED OTHERWISE BY THE SUBMISSION OF THIS DOCUMENT. THEY ARE CONFIDENTIAL AND PROTECTED INFORMATION OF JMI AND THEY MUST NOT BE DISCLOSED, REPRODUCED, LOANED, REMITTED OR USED IN ANY OTHER MANNER WITHOUT THE EXPRESS WRITTEN CONSENT OF JMI. JMI ASSUMES NO RESPONSIBILITY OR LIABILITY FOR THE USE OF THIS DOCUMENT FOR ANY OTHER PROJECT, OR IN A MANNER THAT DOES NOT RELATE TO THE FITNESS OR PURPOSE OF THIS DOCUMENT. IN NO EVENT SHALL THIS DOCUMENT OR THE DESIGN CONCEPTS AND INFORMATION CONTAINED HEREIN BE USED IN A MANNER DENYING TO THE INTERESTS OF JMI. ALL COPYRIGHT, PATENT AND OTHER INTELLECTUAL PROPERTY RIGHTS ARE RESERVED. ACCEPTANCE OF THE DELIVERY OF THIS DOCUMENT CONSTITUTES AGREEMENT TO THESE TERMS AND CONDITIONS.</div>							DESIGNER	DATE	TITLE ACTIFLO CONTROL PANEL SCHEMATIC DIAGRAM	
									M.MERABTI	06-07-26		
									CHECKER	DATE	CLIENT DEEP RIVER (ONT.) (2) ACP-700	
									ENGINEER	DATE		
									MANAGER	DATE		
FILE: 077751-001-E04-004-0		<div><div>JOHN MEUNIER</div><div>4105, SARTELON STREET MONTREAL, QC, H4S 2B3</div></div>										
SCALE:												
PROJECT E501		CODE 001		DRAWING E04		SHEET 04 OF 21		REV D				

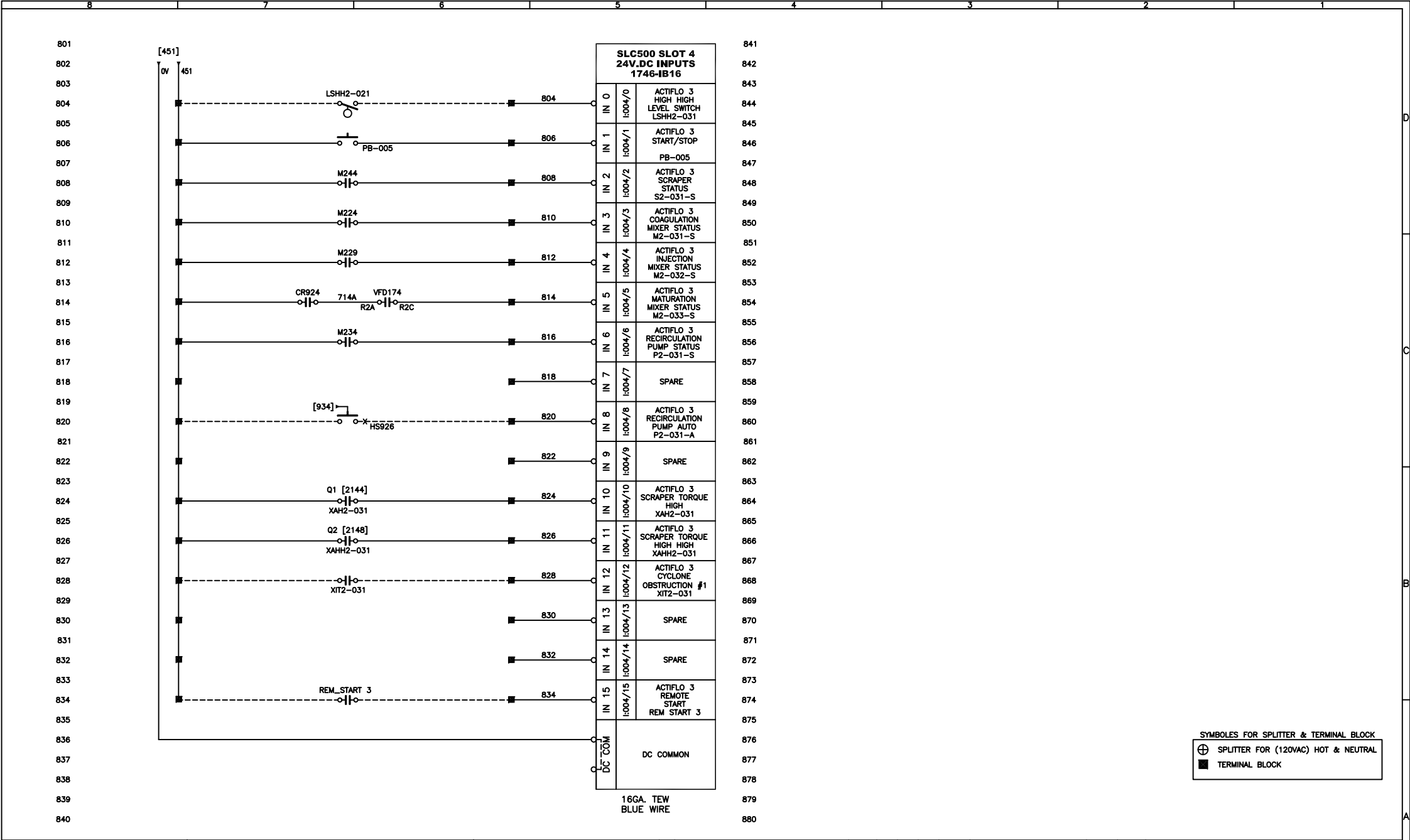
CADRE_GENICO_UJI_24X36.DWG		INTL REF:	
----------------------------	--	-----------	--

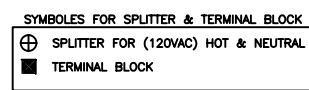
<div><div></div><div>BAR = 1" AT PLOT SCALE</div></div>						
REV	DESCRIPTION	DATE	DWN	CHKD	APVD	ECN



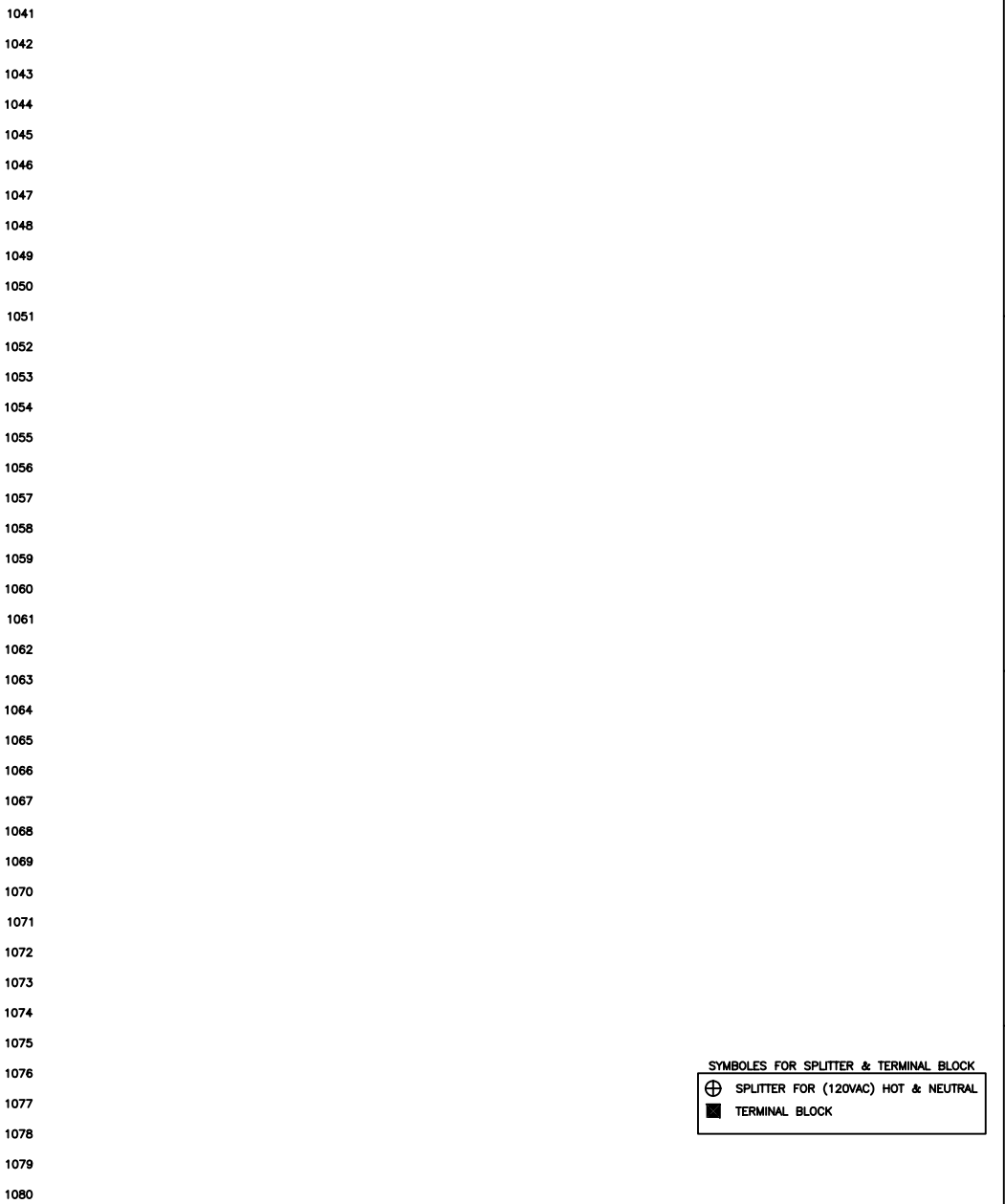


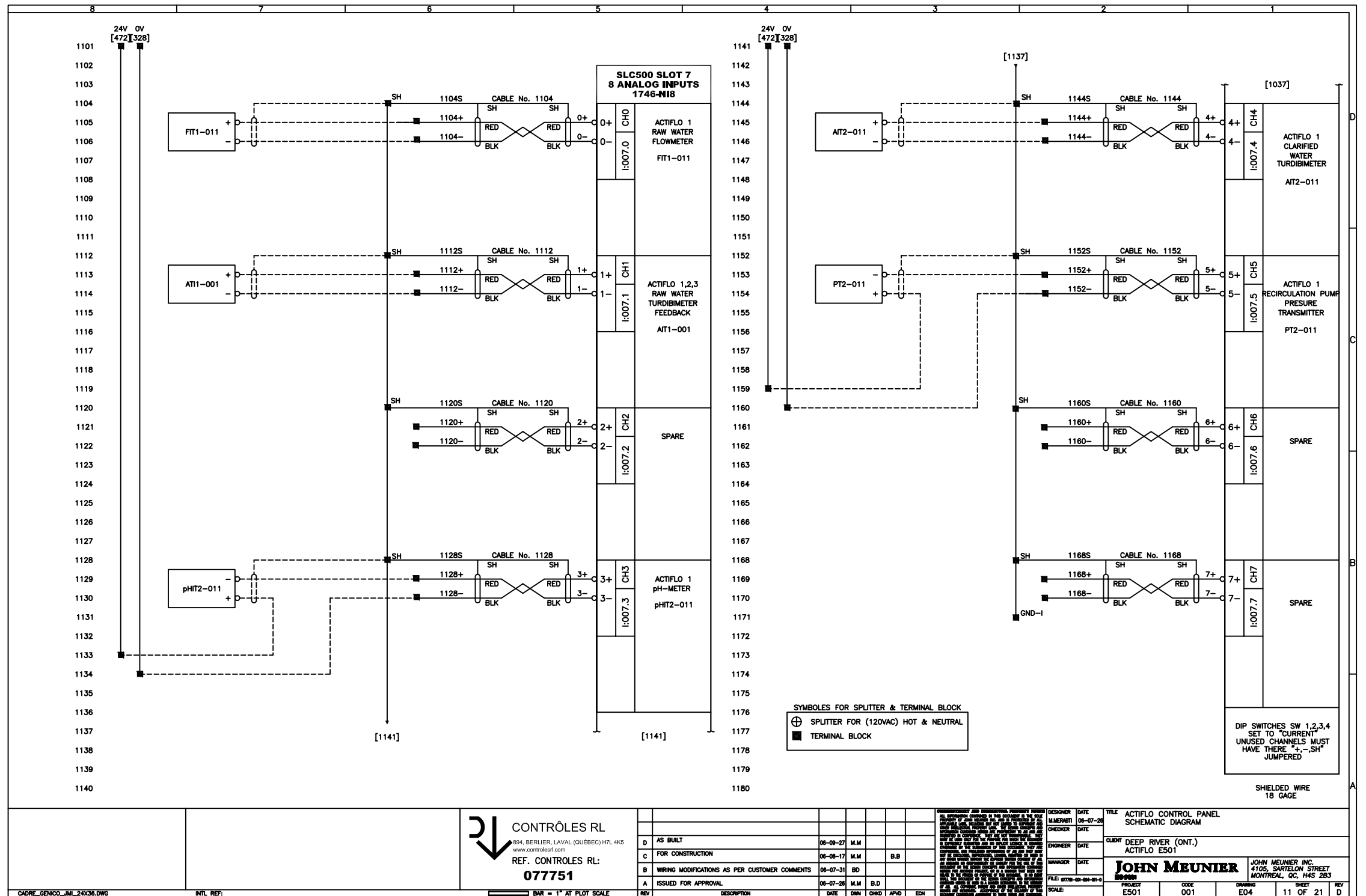


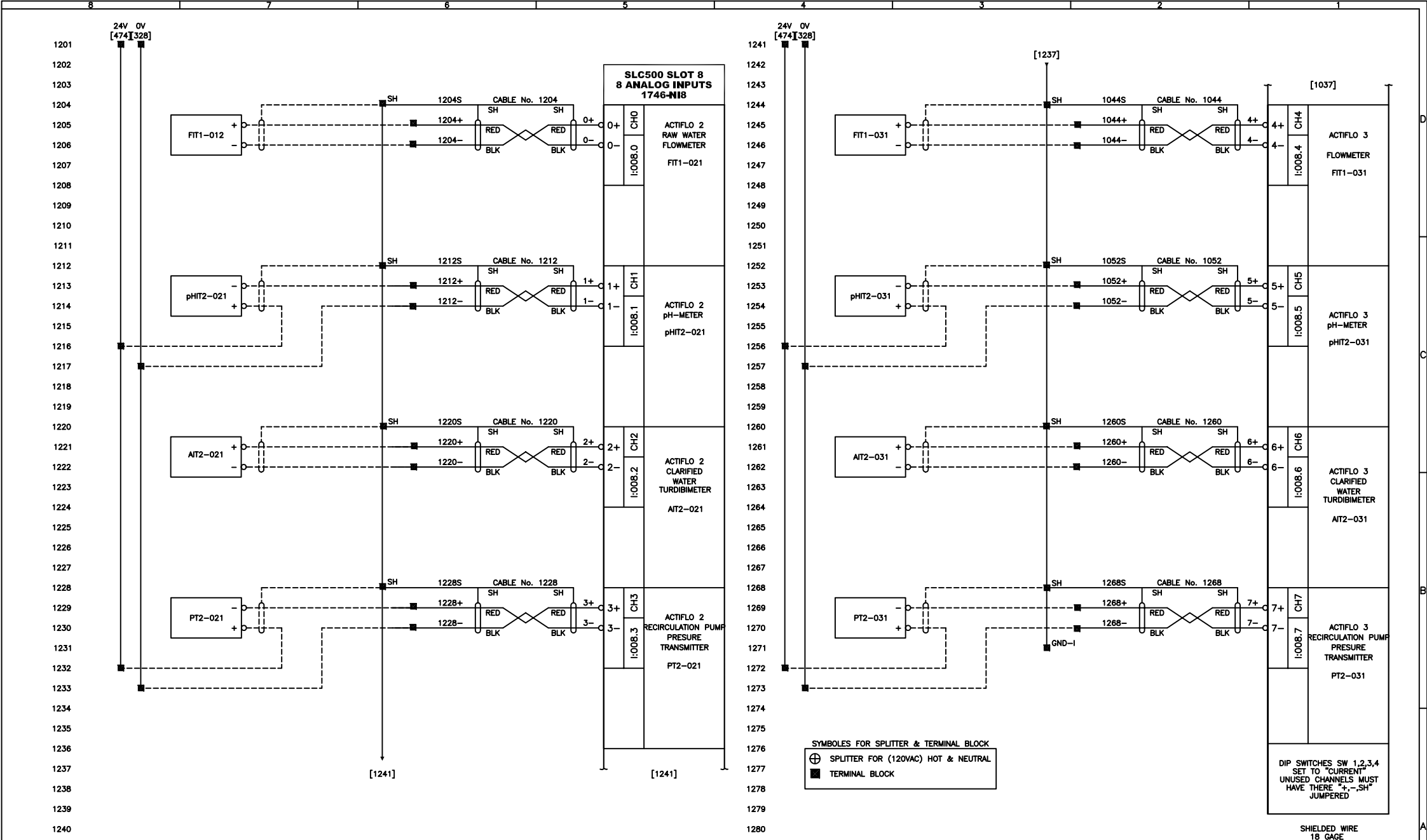




				<div><div></div><div>CONTRÔLES RL</div><div>894, BERLIER, LAVAL (QUÉBEC) H7L 4K5</div><div>www.contrôleest.com</div><div>REF. CONTRÔLES RL:</div><div>077751</div></div>																																																																																																																																																																																																																																																																																																																																																																																																																																																																																																																																																																																																																																																																																																																																																																																																																																																																																																																																																																																																																																																																																																																																																																																																																																																																											
--	--	--	--	--	--	--	--	--	--	--	--	--	--	--	--	--	--	--	--	--	--	--	--	--	--	--	--	--	--	--	--	--	--	--	--	--	--	--	--	--	--	--	--	--	--	--	--	--	--	--	--	--	--	--	--	--	--	--	--	--	--	--	--	--	--	--	--	--	--	--	--	--	--	--	--	--	--	--	--	--	--	--	--	--	--	--	--	--	--	--	--	--	--	--	--	--	--	--	--	--	--	--	--	--	--	--	--	--	--	--	--	--	--	--	--	--	--	--	--	--	--	--	--	--	--	--	--	--	--	--	--	--	--	--	--	--	--	--	--	--	--	--	--	--	--	--	--	--	--	--	--	--	--	--	--	--	--	--	--	--	--	--	--	--	--	--	--	--	--	--	--	--	--	--	--	--	--	--	--	--	--	--	--	--	--	--	--	--	--	--	--	--	--	--	--	--	--	--	--	--	--	--	--	--	--	--	--	--	--	--	--	--	--	--	--	--	--	--	--	--	--	--	--	--	--	--	--	--	--	--	--	--	--	--	--	--	--	--	--	--	--	--	--	--	--	--	--	--	--	--	--	--	--	--	--	--	--	--	--	--	--	--	--	--	--	--	--	--	--	--	--	--	--	--	--	--	--	--	--	--	--	--	--	--	--	--	--	--	--	--	--	--	--	--	--	--	--	--	--	--	--	--	--	--	--	--	--	--	--	--	--	--	--	--	--	--	--	--	--	--	--	--	--	--	--	--	--	--	--	--	--	--	--	--	--	--	--	--	--	--	--	--	--	--	--	--	--	--	--	--	--	--	--	--	--	--	--	--	--	--	--	--	--	--	--	--	--	--	--	--	--	--	--	--	--	--	--	--	--	--	--	--	--	--	--	--	--	--	--	--	--	--	--	--	--	--	--	--	--	--	--	--	--	--	--	--	--	--	--	--	--	--	--	--	--	--	--	--	--	--	--	--	--	--	--	--	--	--	--	--	--	--	--	--	--	--	--	--	--	--	--	--	--	--	--	--	--	--	--	--	--	--	--	--	--	--	--	--	--	--	--	--	--	--	--	--	--	--	--	--	--	--	--	--	--	--	--	--	--	--	--	--	--	--	--	--	--	--	--	--	--	--	--	--	--	--	--	--	--	--	--	--	--	--	--	--	--	--	--	--	--	--	--	--	--	--	--	--	--	--	--	--	--	--	--	--	--	--	--	--	--	--	--	--	--	--	--	--	--	--	--	--	--	--	--	--	--	--	--	--	--	--	--	--	--	--	--	--	--	--	--	--	--	--	--	--	--	--	--	--	--	--	--	--	--	--	--	--	--	--	--	--	--	--	--	--	--	--	--	--	--	--	--	--	--	--	--	--	--	--	--	--	--	--	--	--	--	--	--	--	--	--	--	--	--	--	--	--	--	--	--	--	--	--	--	--	--	--	--	--	--	--	--	--	--	--	--	--	--	--	--	--	--	--	--	--	--	--	--	--	--	--	--	--	--	--	--	--	--	--	--	--	--	--	--	--	--	--	--	--	--	--	--	--	--	--	--	--	--	--	--	--	--	--	--	--	--	--	--	--	--	--	--	--	--	--	--	--	--	--	--	--	--	--	--	--	--	--	--	--	--	--	--	--	--	--	--	--	--	--	--	--	--	--	--	--	--	--	--	--	--	--	--	--	--	--	--	--	--	--	--	--	--	--	--	--	--	--	--	--	--	--	--	--	--	--	--	--	--	--	--	--	--	--	--	--	--	--	--	--	--	--	--	--	--	--	--	--	--	--	--	--	--	--	--	--	--	--	--	--	--	--	--	--	--	--	--	--	--	--	--	--	--	--	--	--	--	--	--	--	--	--	--	--	--	--	--	--	--	--	--	--	--	--	--	--	--	--	--	--	--	--	--	--	--	--	--	--	--	--	--	--	--	--	--	--	--	--	--	--	--	--	--	--	--	--	--	--	--	--	--	--	--	--	--	--	--	--	--	--	--	--	--	--	--	--	--	--	--	--	--	--	--	--	--	--	--	--	--	--	--	--	--	--	--	--	--	--	--	--	--	--	--	--	--	--	--	--	--	--	--	--	--	--	--	--	--	--	--	--	--	--	--	--	--	--	--	--	--	--	--	--	--	--	--	--	--	--	--	--	--	--	--	--	--	--	--	--	--	--	--	--	--	--	--	--	--	--	--	--	--	--	--	--	--	--	--	--	--	--	--	--	--	--	--	--	--	--	--	--	--	--	--	--	--	--	--	--	--	--	--	--	--	--	--	--	--	--	--	--	--	--	--	--	--	--	--	--	--	--	--	--	--	--	--	--	--	--	--	--	--	--	--	--	--	--	--	--	--	--	--	--	--	--	--	--	--	--	--	--	--	--	--	--	--	--	--	--	--	--	--	--	--	--	--	--	--	--	--	--	--	--	--	--	--	--	--	--	--	--	--	--	--	--	--	--	--	--	--	--	--	--	--	--	--	--	--	--	--	--	--	--	--	--	--	--	--	--	--	--	--	--	--	--	--	--	--	--	--	--	--	--	--	--	--	--	--	--	--	--	--	--	--	--	--	--	--	--	--	--	--	--	--	--	--	--	--	--	--	--	--	--	--	--	--	--	--	--	--	--	--	--	--	--	--	--	--	--	--	--	--	--	--	--	--	--	--	--	--	--	--	--	--	--	--	--	--	--	--	--	--	--	--	--	--	--	--	--	--	--	--	--	--	--	--	--	--	--	--	--	--	--	--	--	--	--	--	--	--	--	--	--	--	--	--	--	--	--	--	--	--	--	--	--	--	--	--	--	--	--	--

[illegible]





1301
1302
1303
1304
1305
1306
1307
1308
1309
1310
1311
1312
1313
1314
1315
1316
1317
1318
1319
1320
1321
1322
1323
1324
1325
1326
1327
1328
1329
1330
1331
1332
1333
1334
1335
1336
1337
1338
1339
1340

SLC500 SLOT 9
4 ANALOG OUTPUT
1746-NO4I

COAGULANT
PUMP #1
SPEED
P9-511

CHO
0
1
O:009.0

POLYMER PUMP #1
SPEED
P9-521

CH1
2
3
O:009.1

ACTIFLO 1
RAW WATER
MODULATING VALVE
BFV-217

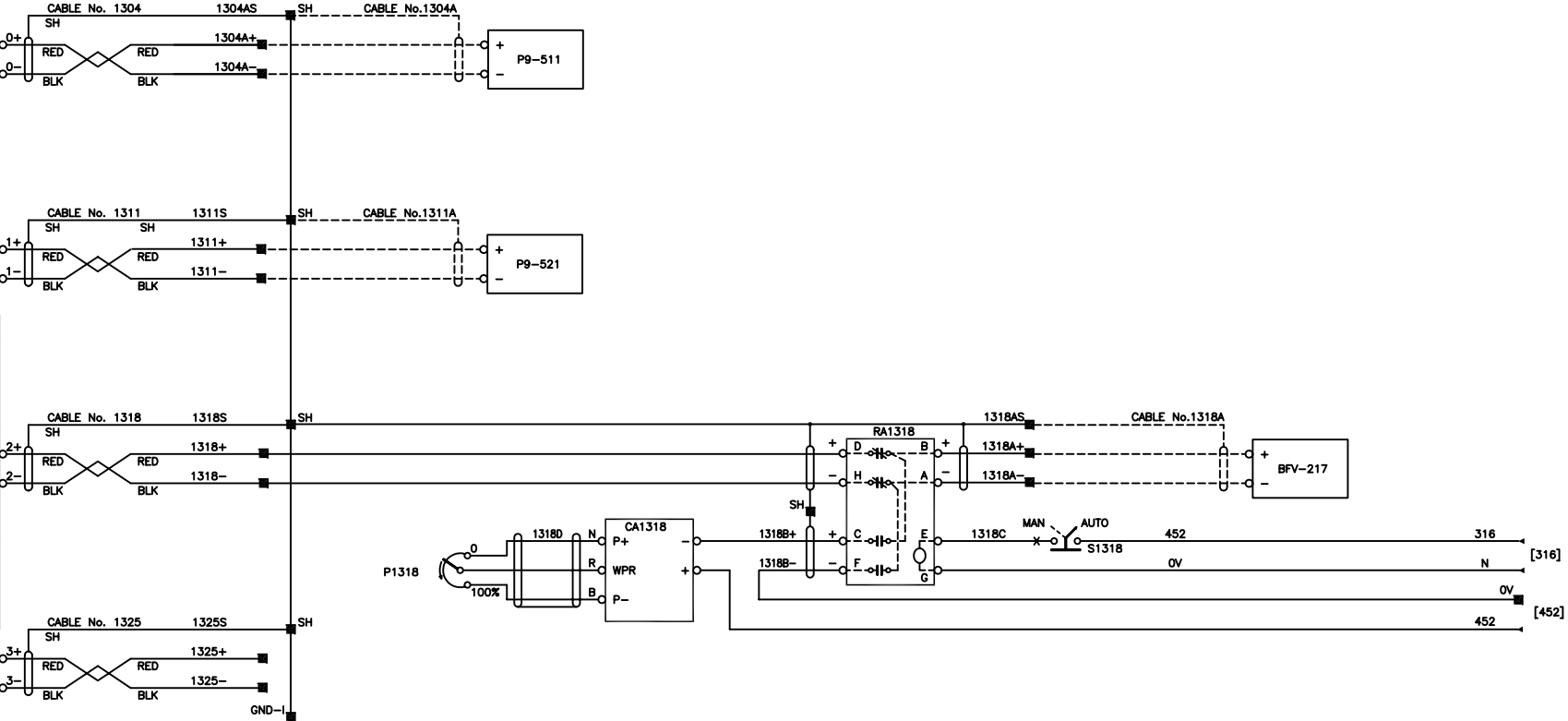
CH2
4
5
O:009.2

SPARE

CH3
6
7
O:009.3

SELECT BACKPLANE 24VDC
POWER SUPPLY
WITH SELECTOR SW1

4-20 mA OUTPUT



SYMBOLS FOR SPLITTER & TERMINAL BLOCK
⊕ SPLITTER FOR (120VAC) HOT & NEUTRAL
■ TERMINAL BLOCK



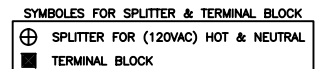
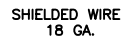
CONTRÔLES RL
894, BERLIER, LAVAL (QUÉBEC) H7L 4K5
www.controlesrl.com
REF. CONTRÔLES RL:
077751

REV	DESCRIPTION	DATE	OWN	CHKD	APVD	ECN
C	AS BUILT	06-08-27	M.M			
B	FOR CONSTRUCTION	06-08-17	M.M		B.B	
A	ISSUED FOR APPROVAL	06-07-26	M.M	B.D		

ALL INFORMATION AND DATA CONTAINED HEREIN IS THE PROPERTY OF JOHN MEUNIER INC. AND IS NOT TO BE REPRODUCED OR TRANSMITTED IN ANY FORM OR BY ANY MEANS, ELECTRONIC OR MECHANICAL, INCLUDING PHOTOCOPYING, RECORDING, OR BY ANY INFORMATION STORAGE AND RETRIEVAL SYSTEM, WITHOUT THE WRITTEN PERMISSION OF JOHN MEUNIER INC. THIS DOCUMENT IS THE PROPERTY OF JOHN MEUNIER INC. AND IS NOT TO BE REPRODUCED OR TRANSMITTED IN ANY FORM OR BY ANY MEANS, ELECTRONIC OR MECHANICAL, INCLUDING PHOTOCOPYING, RECORDING, OR BY ANY INFORMATION STORAGE AND RETRIEVAL SYSTEM, WITHOUT THE WRITTEN PERMISSION OF JOHN MEUNIER INC. THIS DOCUMENT IS THE PROPERTY OF JOHN MEUNIER INC. AND IS NOT TO BE REPRODUCED OR TRANSMITTED IN ANY FORM OR BY ANY MEANS, ELECTRONIC OR MECHANICAL, INCLUDING PHOTOCOPYING, RECORDING, OR BY ANY INFORMATION STORAGE AND RETRIEVAL SYSTEM, WITHOUT THE WRITTEN PERMISSION OF JOHN MEUNIER INC.

DESIGNER M.MERSET	DATE 06-07-26	TITLE ACTIFLO CONTROL PANEL SCHEMATIC DIAGRAM
CHECKER	DATE	
ENGINEER	DATE	
MANAGER	DATE	
FILE: 077751-001-001-001-001	SCALE:	
PROJECT E501	CODE 001	DRAWING E04
SHEET 13 OF 21	REV C	

D
C
B
A



1501
1502
1503
1504
1505
1506
1507
1508
1509
1510
1511
1512
1513
1514
1515
1516
1517
1518
1519
1520
1521
1522
1523
1524
1525
1526
1527
1528
1529
1530
1531
1532
1533
1534
1535
1536
1537
1538
1539
1540

SLC500 SLOT 11
4 ANALOG OUTPUT
1746-NO4I

COAGULANT
BACK UP
PUMP #4
SPEED
P9-524

CH0
0
1
O:011.0

CABLE No. 1504
1504S

SH

SH

1504+

1504-

CABLE No.1504A

P9-524

ACTIFLO 3
RAW WATER
MODULATING
VALVE
BFV-219

CH1
2
3
O:011.1

CABLE No. 1511
1511S

SH

SH

1511+

1511-

CABLE No.1511A

BFV-219

SPARE

CH2
4
5
O:011.2

CABLE No. 1518
1518S

SH

SH

1518+

1518-

SPARE

CH3
6
7
O:011.3

CABLE No. 1525
1525S

SH

SH

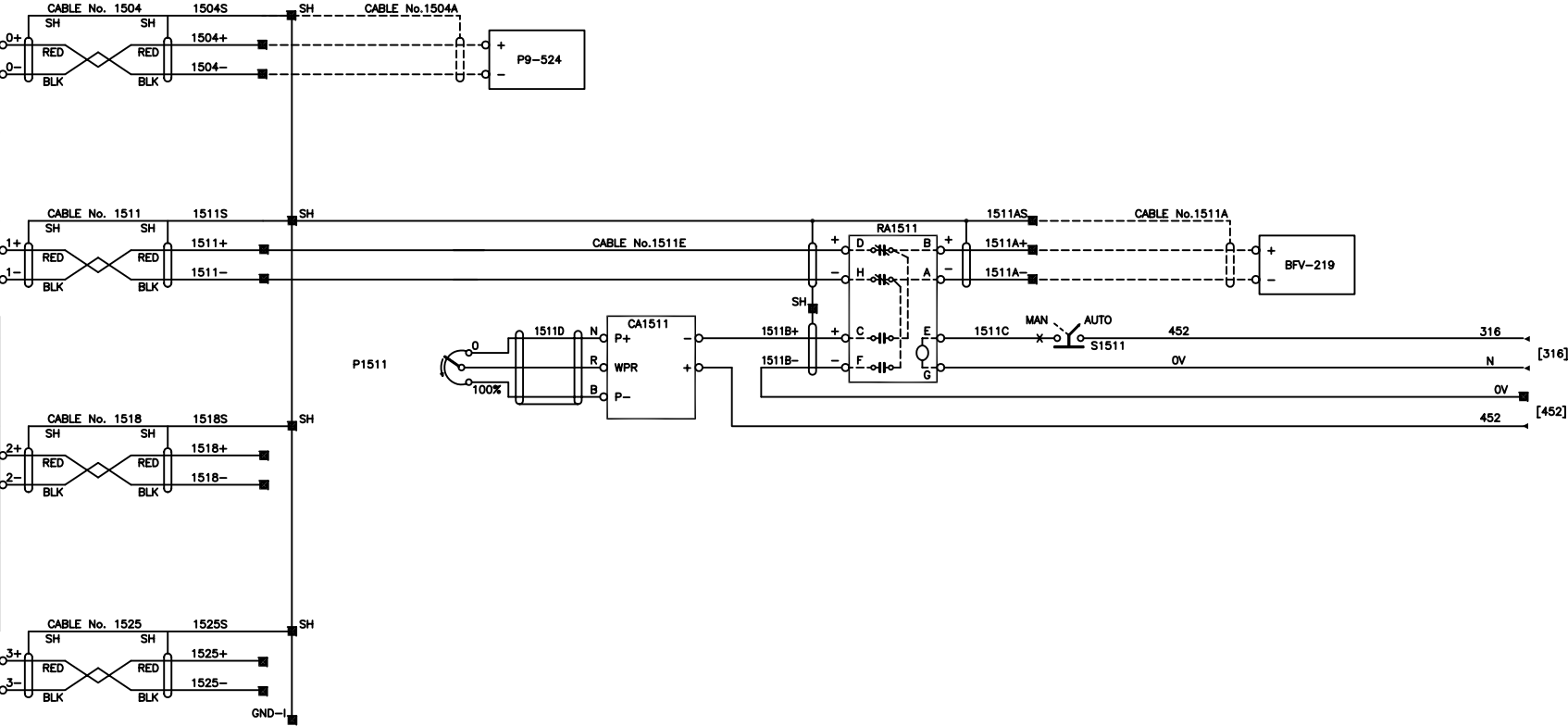
1525+

1525-

GND-I

SELECT BACKPLANE 24VDC
POWER SUPPLY
WITH SELECTOR SW1

4-20 mA OUTPUT



SYMBOLS FOR SPLITTER & TERMINAL BLOCK

⊕

SPLITTER FOR (120VAC) HOT & NEUTRAL

■

TERMINAL BLOCK

8

7

6

5

4

3

2

1

1601

1602

1603

1604

1605

1606

1607

1608

1609

1610

1611

1612

1613

1614

1615

1616

1617

1618

1619

1620

1621

1622

1623

1624

1625

1626

1627

1628

1629

1630

1631

1632

1633

1634

1635

1636

1637

1638

1639

1640

SLOT 12: SPARE

1641

1642

1643

1644

1645

1646

1647

1648

1649

1650

1651

1652

1653

1654

1655

1656

1657

1658

1659

1660

1661

1662

1663

1664

1665

1666

1667

1668

1669

1670

1671

1672

1673

1674

1675

1676

1677

1678

1679

1680

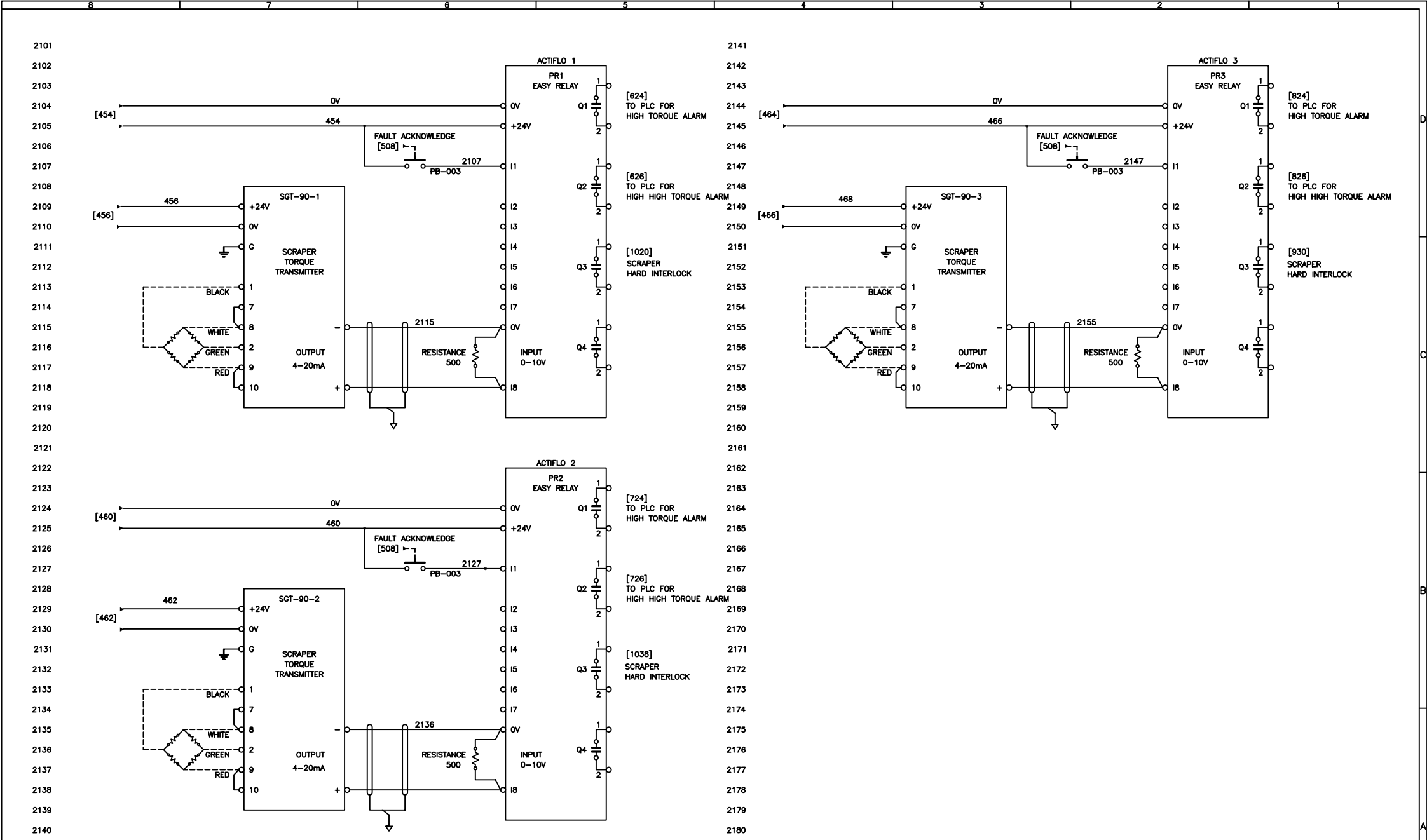
</

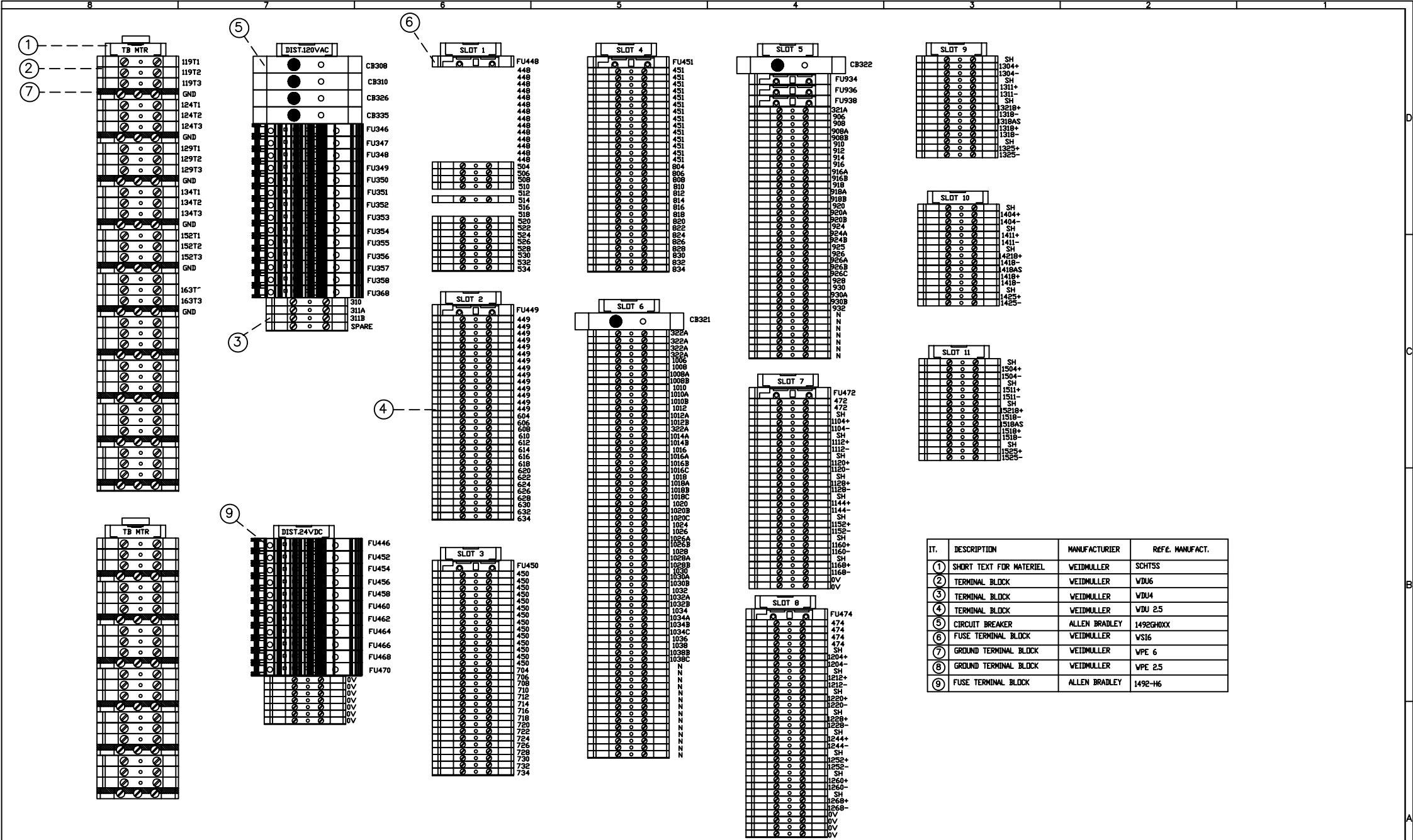
[illegible]

[illegible]

8		7		6		5		4		3		2		1																																																													
<div><div><div>1901</div><div>1902</div><div>1903</div><div>1904</div><div>1905</div><div>1906</div><div>1907</div><div>1908</div><div>1909</div><div>1910</div><div>1911</div><div>1912</div><div>1913</div><div>1914</div><div>1915</div><div>1916</div><div>1917</div><div>1918</div><div>1919</div><div>1920</div><div>1921</div><div>1922</div><div>1923</div><div>1924</div><div>1925</div><div>1926</div><div>1927</div><div>1928</div><div>1929</div><div>1930</div><div>1931</div><div>1932</div><div>1933</div><div>1934</div><div>1935</div><div>1936</div><div>1937</div><div>1938</div><div>1939</div><div>1940</div></div><div><div>SLOT 15: SPARE</div></div><div><div>1941</div><div>1942</div><div>1943</div><div>1944</div><div>1945</div><div>1946</div><div>1947</div><div>1948</div><div>1949</div><div>1950</div><div>1951</div><div>1952</div><div>1953</div><div>1954</div><div>1955</div><div>1956</div><div>1957</div><div>1958</div><div>1959</div><div>1960</div><div>1961</div><div>1962</div><div>1963</div><div>1964</div><div>1965</div><div>1966</div><div>1967</div><div>1968</div><div>1969</div><div>1970</div><div>1971</div><div>1972</div><div>1973</div><div>1974</div><div>1975</div><div>1976</div><div>1977</div><div>1978</div><div>1979</div><div>1980</div></div></div>																																																																											
CADRE_GENICO_JMI_24X36.DWG		INTL REF:		<div><div><div><div></div></div></div><div>CONTRÔLES RL</div><div>894, BERLIER, LAVAL (QUÉBEC) H7L 4K5</div><div>www.controlesrl.com</div><div>REF. CONTROLES RL:</div><div>077751</div></div>		<table><tr><td>REV</td><td>DESCRIPTION</td><td>DATE</td><td>DWN</td><td>CHKD</td><td>APVD</td><td>ECH</td></tr><tr><td>C</td><td>AS BUILT</td><td>06-08-27</td><td>M.M</td><td></td><td></td><td></td></tr><tr><td>B</td><td>FOR CONSTRUCTION</td><td>06-06-19</td><td>M.M</td><td></td><td>B.B</td><td></td></tr><tr><td>A</td><td>ISSUED FOR APPROVAL</td><td>06-07-26</td><td>M.M</td><td>B.D</td><td></td><td></td></tr></table>		REV	DESCRIPTION	DATE	DWN	CHKD	APVD	ECH	C	AS BUILT	06-08-27	M.M				B	FOR CONSTRUCTION	06-06-19	M.M		B.B		A	ISSUED FOR APPROVAL	06-07-26	M.M	B.D			<div><div><div>ALL DIMENSIONS AND MATERIALS MUST BE AS SHOWN ON THE DRAWING. IN THE EVENT OF A DISCREPANCY BETWEEN THE DRAWING AND THE FIELD, THE FIELD SHALL PREVAIL. THE CONTRACTOR SHALL BE RESPONSIBLE FOR OBTAINING ALL NECESSARY PERMITS AND APPROVALS. THE CONTRACTOR SHALL BE RESPONSIBLE FOR THE PROTECTION OF ALL EXISTING UTILITIES AND STRUCTURES. THE CONTRACTOR SHALL BE RESPONSIBLE FOR THE PROTECTION OF ALL EXISTING TREES AND LANDSCAPE. THE CONTRACTOR SHALL BE RESPONSIBLE FOR THE PROTECTION OF ALL EXISTING ROADS AND HIGHWAYS.</div></div></div>		<table><tr><td>DESIGNER</td><td>DATE</td></tr><tr><td>M.MERVEN</td><td>06-07-26</td></tr><tr><td>CHECKER</td><td>DATE</td></tr><tr><td>ENGINEER</td><td>DATE</td></tr><tr><td>MANAGER</td><td>DATE</td></tr></table>		DESIGNER	DATE	M.MERVEN	06-07-26	CHECKER	DATE	ENGINEER	DATE	MANAGER	DATE	<table><tr><td colspan="2">TITLE</td></tr><tr><td colspan="2">ACTIFLO CONTROL PANEL SCHEMATIC DIAGRAM</td></tr><tr><td colspan="2">CLIENT</td></tr><tr><td colspan="2">DEEP RIVER(ONT.) ACTIFLO E501</td></tr><tr><td colspan="2">FILE: 077751-02-04-04-C</td></tr><tr><td colspan="2">SCALE:</td></tr></table>		TITLE		ACTIFLO CONTROL PANEL SCHEMATIC DIAGRAM		CLIENT		DEEP RIVER(ONT.) ACTIFLO E501		FILE: 077751-02-04-04-C		SCALE:		<table><tr><td>PROJECT</td><td>CODE</td><td>DRAWING</td><td>SHEET</td><td>REV</td></tr><tr><td>E501</td><td>001</td><td>E04</td><td>19 OF 21</td><td>C</td></tr></table>		PROJECT	CODE	DRAWING	SHEET	REV	E501	001	E04	19 OF 21	C
REV	DESCRIPTION	DATE	DWN	CHKD	APVD	ECH																																																																					
C	AS BUILT	06-08-27	M.M																																																																								
B	FOR CONSTRUCTION	06-06-19	M.M		B.B																																																																						
A	ISSUED FOR APPROVAL	06-07-26	M.M	B.D																																																																							
DESIGNER	DATE																																																																										
M.MERVEN	06-07-26																																																																										
CHECKER	DATE																																																																										
ENGINEER	DATE																																																																										
MANAGER	DATE																																																																										
TITLE																																																																											
ACTIFLO CONTROL PANEL SCHEMATIC DIAGRAM																																																																											
CLIENT																																																																											
DEEP RIVER(ONT.) ACTIFLO E501																																																																											
FILE: 077751-02-04-04-C																																																																											
SCALE:																																																																											
PROJECT	CODE	DRAWING	SHEET	REV																																																																							
E501	001	E04	19 OF 21	C																																																																							

[illegible]





IT.	DESCRIPTION	MANUFACTURIER	REFE. MANUFACT.
①	SHORT TEXT FOR MATERIEL	WEIDMULLER	SCHTSS
②	TERMINAL BLOCK	WEIDMULLER	WDU6
③	TERMINAL BLOCK	MULLER	WDU4
④	TERMINAL BLOCK	WEIDMULLER	WDU 2.5
⑤	CIRCUIT BREAKER	ALLEN BRADLEY	1492GHXX
⑥	FUSE TERMINAL BLOCK	WEIDMULLER	VS16
⑦	GROUND TERMINAL BLOCK	WEIDMULLER	WPE 6
⑧	GROUND TERMINAL BLOCK	WEIDMULLER	WPE 2.5
⑨	FUSE TERMINAL BLOCK	ALLEN BRADLEY	1492-H6

CADRE_GENICO_JMI_24X36.DWG

INTL REF:

CONTRÔLES RL

894, BERLIER, LAVAL (QUÉBEC) H7L 4K5

www.controlesrl.com

REF. CONTRÔLES RL:

077751

AS BUILT

08-08-27

M.M

FOR CONSTRUCTION

08-08-17

M.M

B.B

ISSUED FOR APPROVAL

08-07-28

M.M

REV

DESCRIPTION

DATE

OWN

CHWD

APVD

EDH

DESIGNER

N.MERABTI

DATE

06-07-28

CHECKER

DATE

ENGINEER

DATE

MANAGER

DATE

FILE: 077751-001-001-001-0

SCALE:

TITLE

ACTIFLO CONTROL PANEL

TERMINAL BLOCK DESCRIPTION.

CLIENT

DEEP RIVER (ONT.)

ACTIFLO E501

JOHN MEUNI

4105, SARTELON STREET

MONTREAL, QC, H4S 2B3

PROJECT

E501

CODE

001

DRAWING

E05

SHEET

01 OF 01

REV

C

